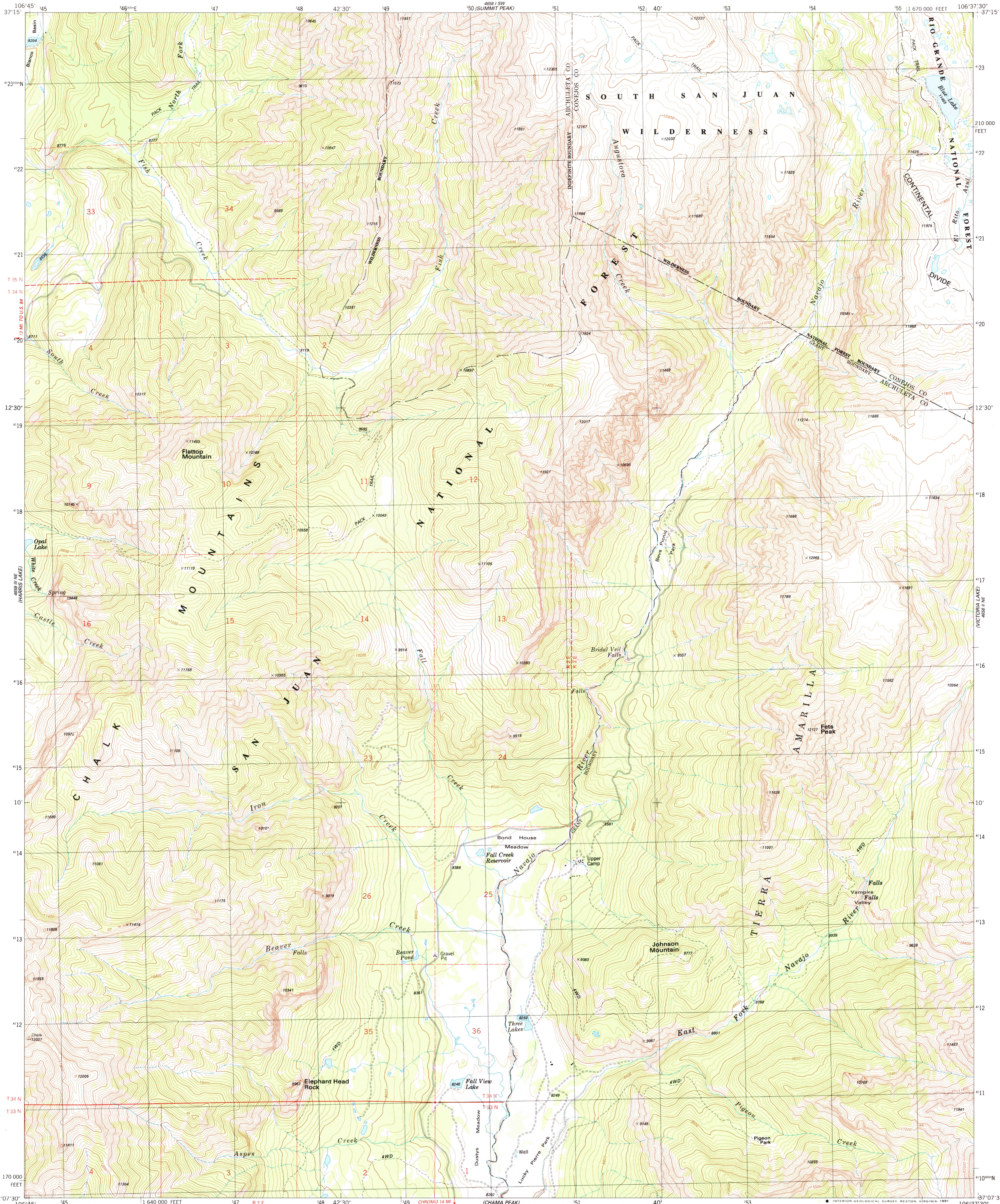


4658 N SE  
(BLACK HOLE PEAK)

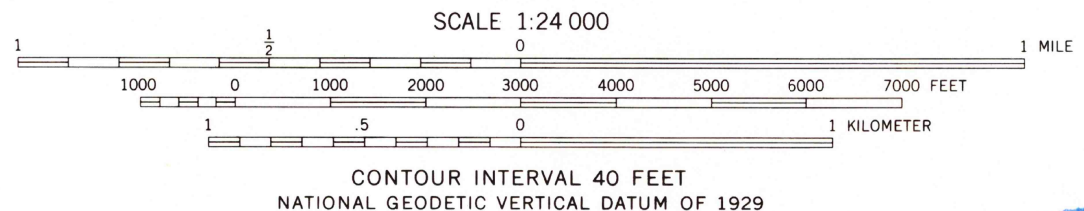
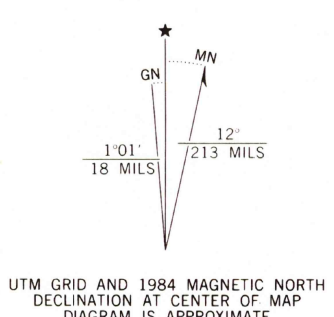
UNITED STATES  
DEPARTMENT OF THE INTERIOR  
GEOLOGICAL SURVEY

ELEPHANT HEAD ROCK QUADRANGLE  
COLORADO  
7.5 MINUTE SERIES (TOPOGRAPHIC)

4658 E  
(ARCHULETA CREEK)



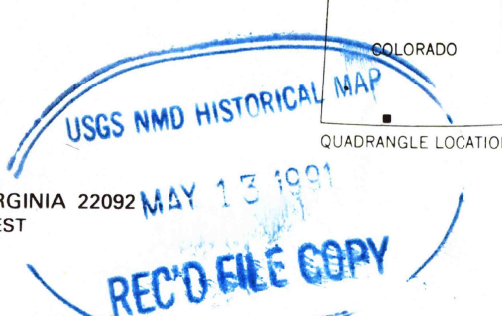
Mapped, edited, and published by the Geological Survey  
Control by USGS and NOS/NOAA  
Topography by photogrammetric methods from aerial photographs taken 1977. Field checked 1978. Map edited 1984  
Projection and 10,000-foot grid ticks: Colorado coordinate system, south zone (Lambert conformal conic) 1000-meter Universal Transverse Mercator grid, zone 13 1927 North American Datum  
To place on the predicted North American Datum 1983 move the projection lines 2 meters north and 52 meters east as shown by dashed corner ticks  
Where omitted, land lines have not been established or are not shown because of insufficient data  
There may be private inholdings within the boundaries of the National or State reservations shown on this map



ROAD CLASSIFICATION

Primary highway, hard surface	Light-duty road, hard or improved surface
Secondary highway, hard surface	Unimproved road
Interstate Route	U. S. Route
	State Route

THIS MAP COMPLIES WITH NATIONAL MAP ACCURACY STANDARDS  
FOR SALE BY U. S. GEOLOGICAL SURVEY, DENVER, COLORADO 80225, OR RESTON, VIRGINIA 22092  
A FOLDER DESCRIBING TOPOGRAPHIC MAPS AND SYMBOLS IS AVAILABLE ON REQUEST



ELEPHANT HEAD ROCK, COLO.

37106-B6-TF-024

1984

DMA 4658 II NW-SERIES V877

(CHROMO) 4658 N SE

(ARCHULETA CREEK)