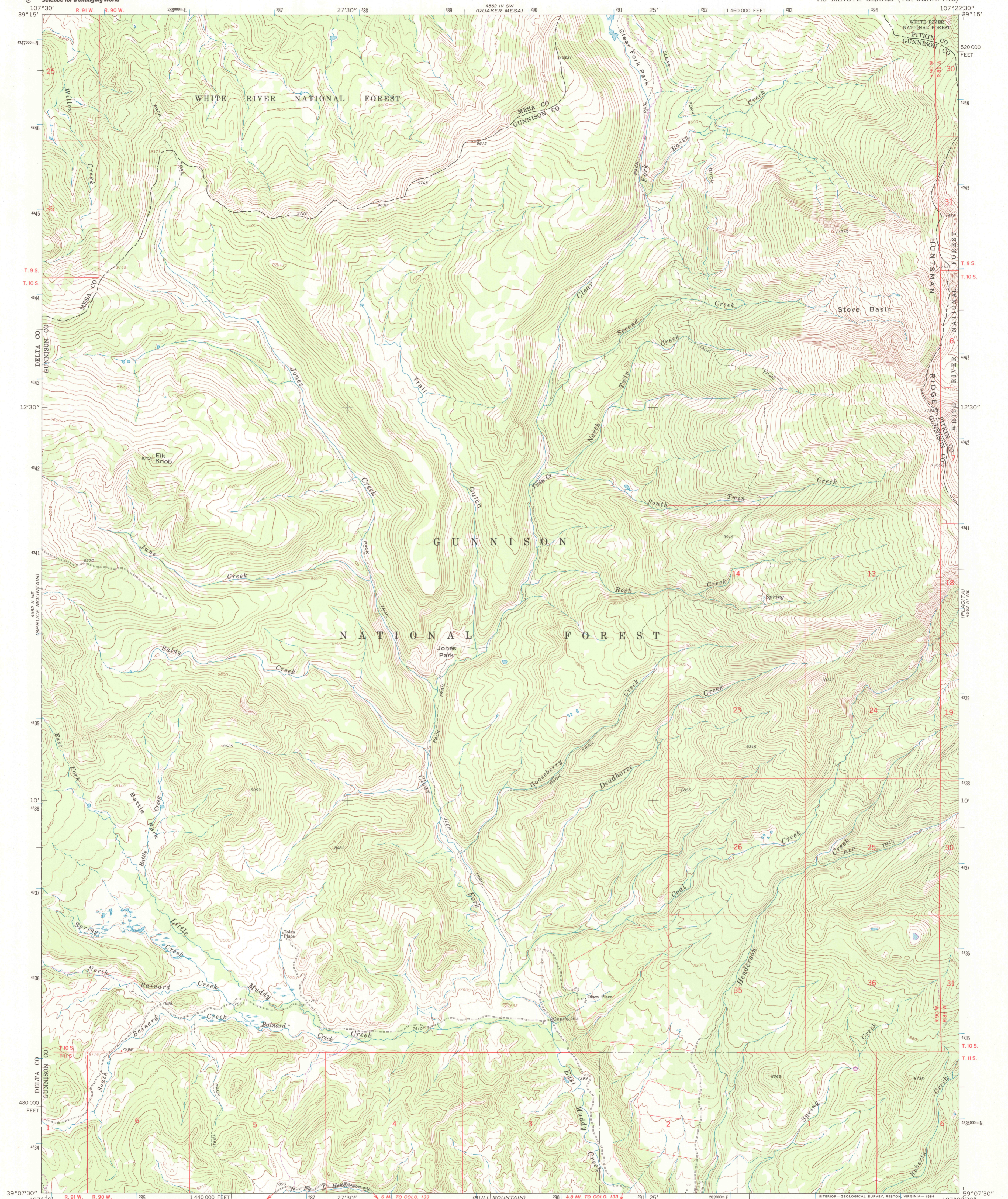




U.S. DEPARTMENT OF THE INTERIOR
U.S. GEOLOGICAL SURVEY

ELK KNOB QUADRANGLE
COLORADO
7.5 MINUTE SERIES (TOPOGRAPHIC)



Mapped, edited, and published by the Geological Survey

Control by USGS and NOS/NOAA

Topography by photogrammetric methods from aerial photographs taken 1962. Field checked 1963

Polyconic projection. 1927 North American Datum

10,000-foot grid based on Colorado coordinate system, central zone

1000-meter Universal Transverse Mercator grid ticks, zone 13, shown in blue

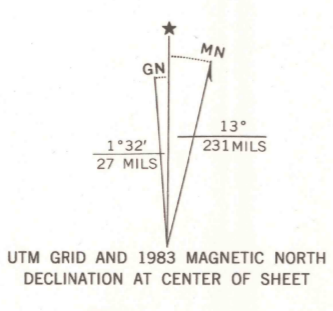
Fine red dashed lines indicate selected fence lines

Where omitted, land lines have not been established

To place on the predicted North American Datum 1983

move the projection lines 5 meters north and 54 meters east as shown by dashed corner ticks

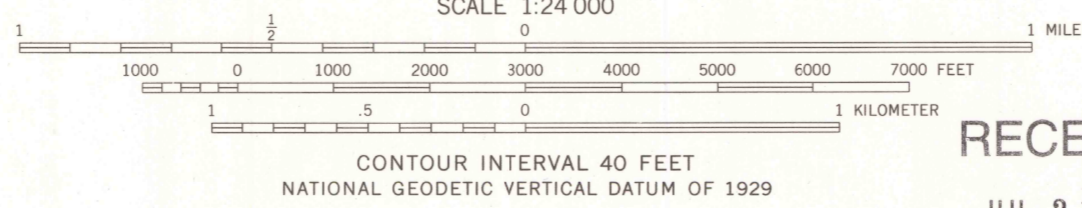
There may be private inholdings within the boundaries of the National or State reservations shown on this map



UTM GRID AND 1983 MAGNETIC NORTH DECLINATION AT CENTER OF SHEET



28% TOTAL RECYCLED FIBER

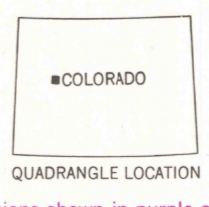


SCALE 1:24 000

CONTOUR INTERVAL 40 FEET

NATIONAL GEODETIC VERTICAL DATUM OF 1929

RECEIVED
JUL 31 1999



QUADRANGLE LOCATION

THIS MAP COMPLIES WITH NATIONAL MAP ACCURACY STANDARDS FOR SALE BY U.S. GEOLOGICAL SURVEY, P.O. BOX 25286, DENVER, COLORADO 80225

A FOLDER DESCRIBING TOPOGRAPHIC MAPS AND SYMBOLS IS AVAILABLE ON REQUEST

USGS NMD

HISTORICAL MAP ARCHIVES

Revisions shown in purple and woodland compiled from aerial photographs taken 1979 and other source data

This information not field checked. Map edited 1983

ROAD CLASSIFICATION
Light-duty Unimproved dirt -----

ELK KNOB, COLO
N3907.5—W10722.5/7.5

PHOTOREVISED 1983

DMA 4562 III NW—SERIES V877



9 780607 117615