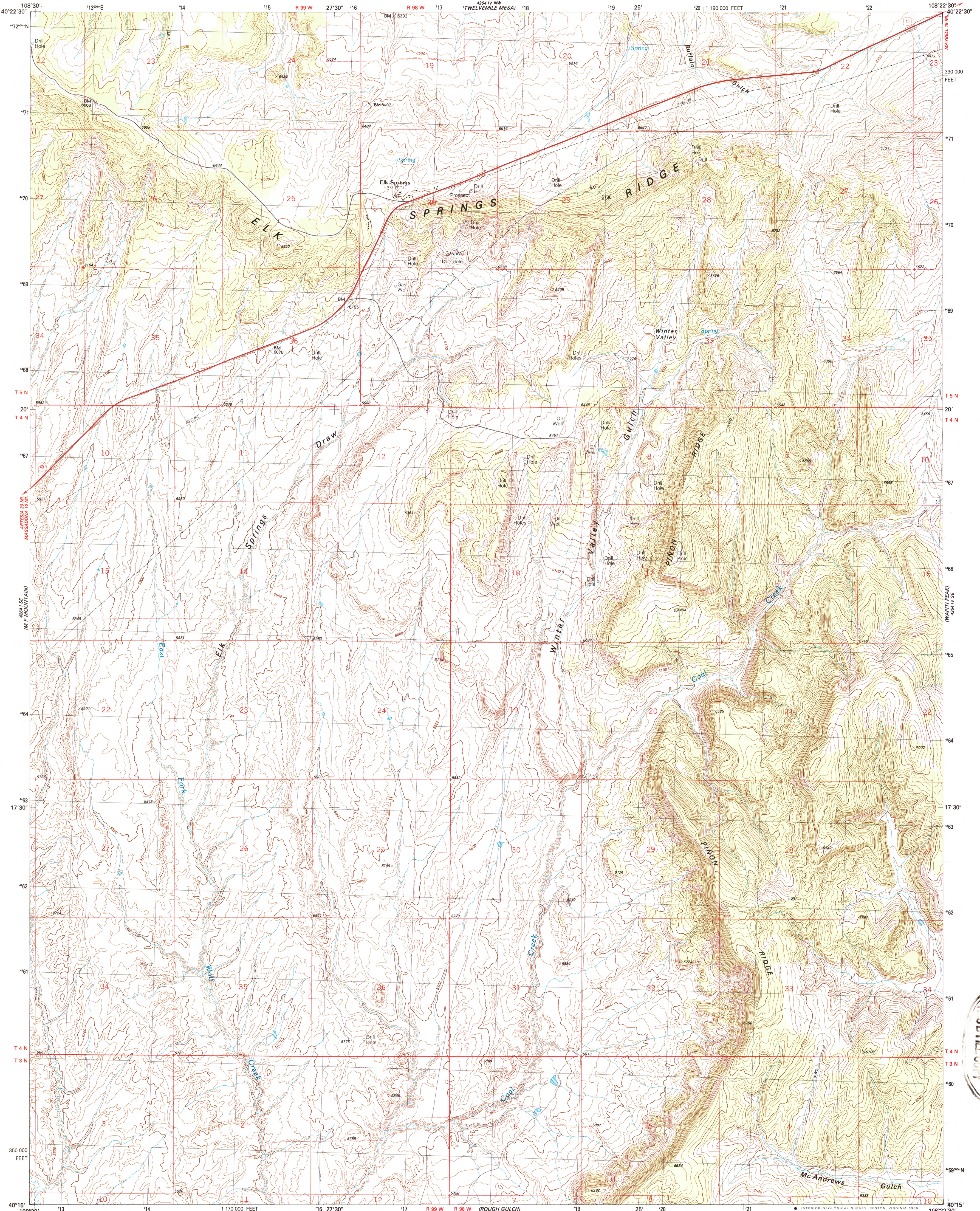


UNITED STATES
DEPARTMENT OF THE INTERIOR
GEOLOGICAL SURVEY

ELK SPRINGS QUADRANGLE
COLORADO-MOFFAT CO.
7.5 MINUTE SERIES (TOPOGRAPHIC)
SW4 ELK SPRINGS 15' QUADRANGLE



USGS MAP HISTORICAL MAP
DEC 02 1986
PFD FILE COPY

Produced by the United States Geological Survey

Control by USGS and NOS/NOAA

Compiled by photogrammetric methods from aerial photographs taken 1981. Field checked 1982. Map edited 1986

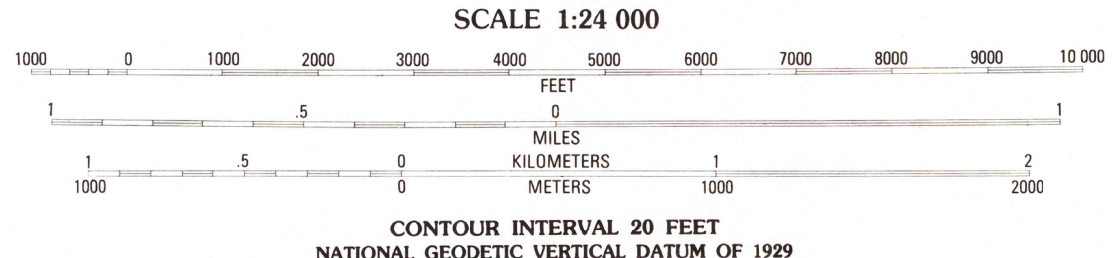
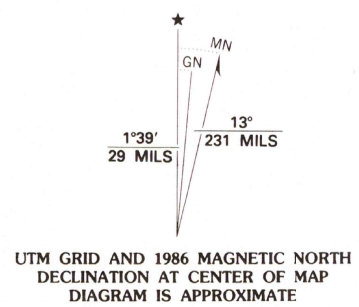
Projection and 10,000-foot grid ticks: Colorado coordinate system, north zone (Lambert conformal conic)

1000-meter Universal Transverse Mercator grid, zone 12

1927 North American Datum

To place on the predicted North American Datum 1983 move the projection lines 7 meters north and 56 meters east as shown by dashed corner ticks

Fine red dashed lines indicate selected fence and field lines generally visible on aerial photographs. This information is unchecked



ROAD CLASSIFICATION

Primary highway, hard surface	Light-duty road, hard or improved surface
Secondary highway, hard surface	Unimproved road
Interstate Route	U. S. Route
	State Route

QUADRANGLE LOCATION

ELK SPRINGS, COLO.
SW4 ELK SPRINGS 15' QUADRANGLE
40108-C4-TF-024

1986

DMA 4364 IV SW-SERIES V877

THIS MAP COMPLIES WITH NATIONAL MAP ACCURACY STANDARDS
FOR SALE BY U. S. GEOLOGICAL SURVEY, DENVER, COLORADO 80225, OR RESTON, VIRGINIA 22092
A FOLDER DESCRIBING TOPOGRAPHIC MAPS AND SYMBOLS IS AVAILABLE ON REQUEST