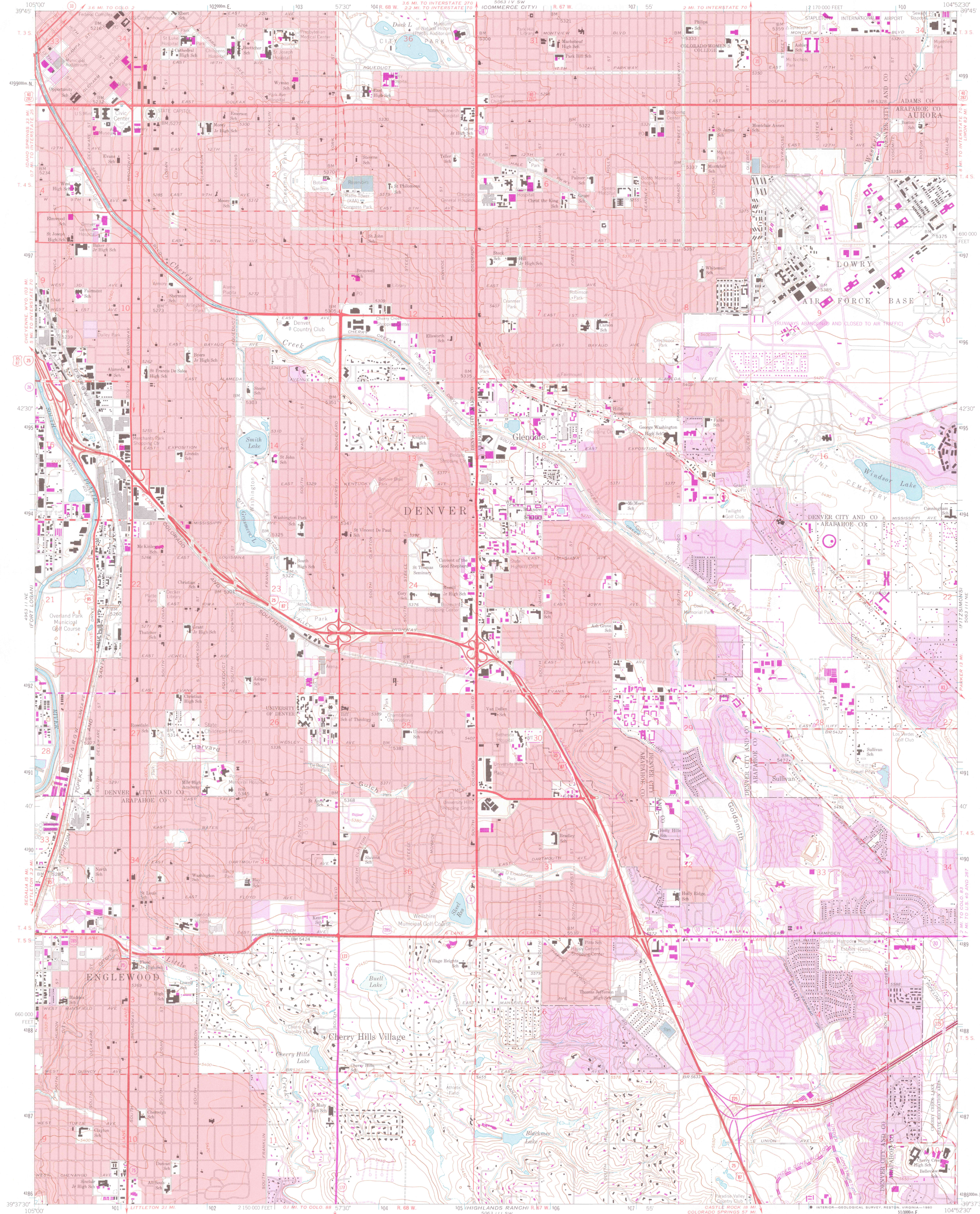


UNITED STATES  
DEPARTMENT OF THE INTERIOR  
GEOLOGICAL SURVEY

ENGLEWOOD QUADRANGLE  
COLORADO  
7.5 MINUTE SERIES (TOPOGRAPHIC)

GEOL



MAR 1995  
MAP ROOM  
ARTHUR LAKES LIBRARY  
COLORADO SCHOOL OF MINES

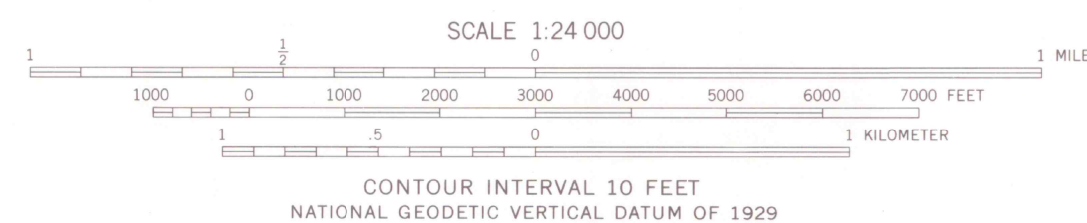
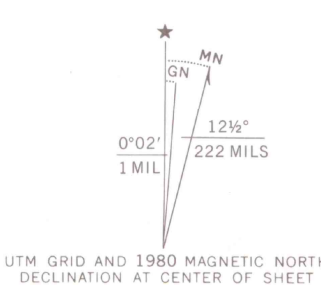
LIBRARY USE ONLY  
OFFICE COPY

3701 -  
C222 -  
S24  
U5

Mapped, edited, and published by the Geological Survey  
Control by USGS and NOS/NOAA  
Topography by photogrammetric methods from aerial photographs  
taken 1964. Field checked 1965. Supersedes map dated 1957  
Polyconic projection. 1927 North American datum  
10,000-foot grid based on Colorado coordinate system, central zone  
1000-meter Universal Transverse Mercator grid ticks,  
zone 13, shown in blue

Red tint indicates areas in which only landmark buildings are shown  
To place on the predicted North American Datum 1983  
move the projection lines 5 meters north and  
47 meters east as shown by dashed corner ticks  
There may be private inholdings within the boundaries of  
the National or State reservations shown on this map

Revisions shown in purple compiled from aerial photographs  
taken 1978 and other source data. This information not  
field checked. Map edited 1980  
Purple tint indicates extension of urban areas



GEOLOGICAL SURVEY OF THE UNITED STATES

THIS MAP COMPLIES WITH NATIONAL MAP ACCURACY STANDARDS  
taken 1978 and other source data. This information not  
field checked. Map edited 1980  
A FOLDER DESCRIBING TOPOGRAPHIC MAPS AND SYMBOLS IS AVAILABLE ON REQUEST



ROAD CLASSIFICATION  
Heavy-duty ——— Light-duty ———  
Medium-duty ——— Unimproved dirt ———  
Interstate Route U.S. Route State Route

TOPO CO 24000  
ENGLEWOOD, COLO.  
N3937.5-W10452.5/7.5

1965  
PHOTOREVISED 1980  
DMA 5063 111 NW-SERIES V877