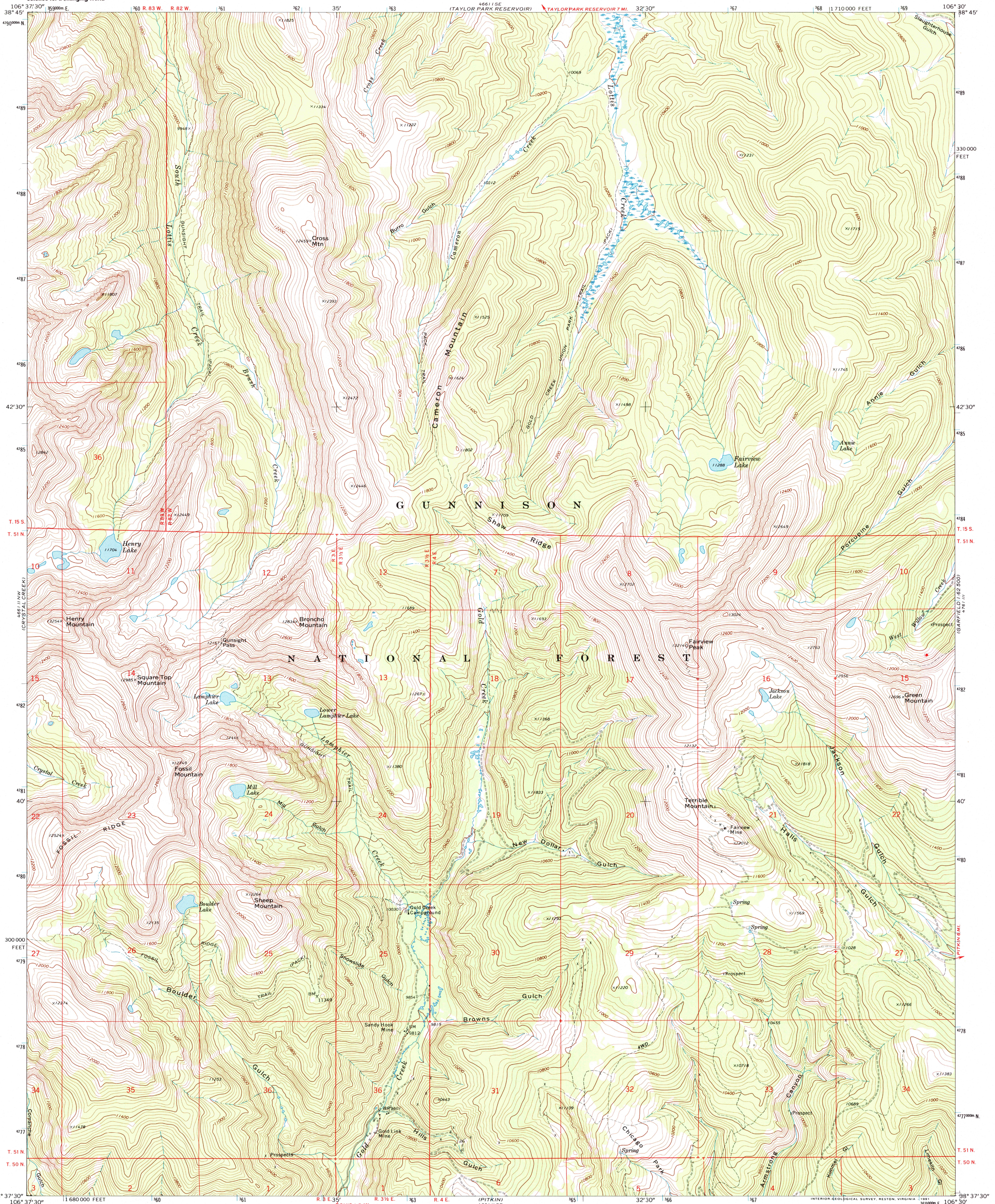




U.S. DEPARTMENT OF THE INTERIOR  
U.S. GEOLOGICAL SURVEY

FAIRVIEW PEAK QUADRANGLE  
COLORADO-GUNNISON CO.  
7.5 MINUTE SERIES (TOPOGRAPHIC)

1:250,000  
1:62,500



Mapped, edited, and published by the Geological Survey  
Control by USGS and NOS/NOAA  
Topography by photogrammetric methods from aerial photographs taken 1964. Field checked 1967.  
Polyconic projection. 1927 North American Datum  
10,000-foot grid based on Colorado coordinate system, central zone  
1000-meter Universal Transverse Mercator grid ticks, zone 13, shown in blue  
The difference between 1927 North American Datum and North American Datum of 1983 (NAD 83) for 7.5 minute intersections is given in USGS Bulletin 1875. The NAD 83 is shown by dashed corner ticks  
Certain land lines are omitted because of insufficient data  
There may be private inholdings within the boundaries of the National or State reservations shown on this map

Map photoinsppected 1979  
No major culture or drainage changes observed

SCALE 1:24,000  
CONTOUR INTERVAL 40 FEET  
NATIONAL GEODETIC VERTICAL DATUM OF 1929  
THIS MAP COMPLIES WITH NATIONAL MAP ACCURACY STANDARDS  
FOR SALE BY U.S. GEOLOGICAL SURVEY, P.O. BOX 25286, DENVER, COLORADO 80225  
A FOLDER DESCRIBING TOPOGRAPHIC MAPS AND SYMBOLS IS AVAILABLE ON REQUEST

ROAD CLASSIFICATION  
Light-duty ————— Unimproved dirt - - - - -  
RECEIVED FAIRVIEW PEAK, COLO.  
38106-F5-TF-024  
JUN 30 1999  
USGS NMD  
HISTORICAL MAP ARCHIVES  
1967  
PHOTOINSPECTED 1979  
DMA 4661 II NE-SERIES V877

