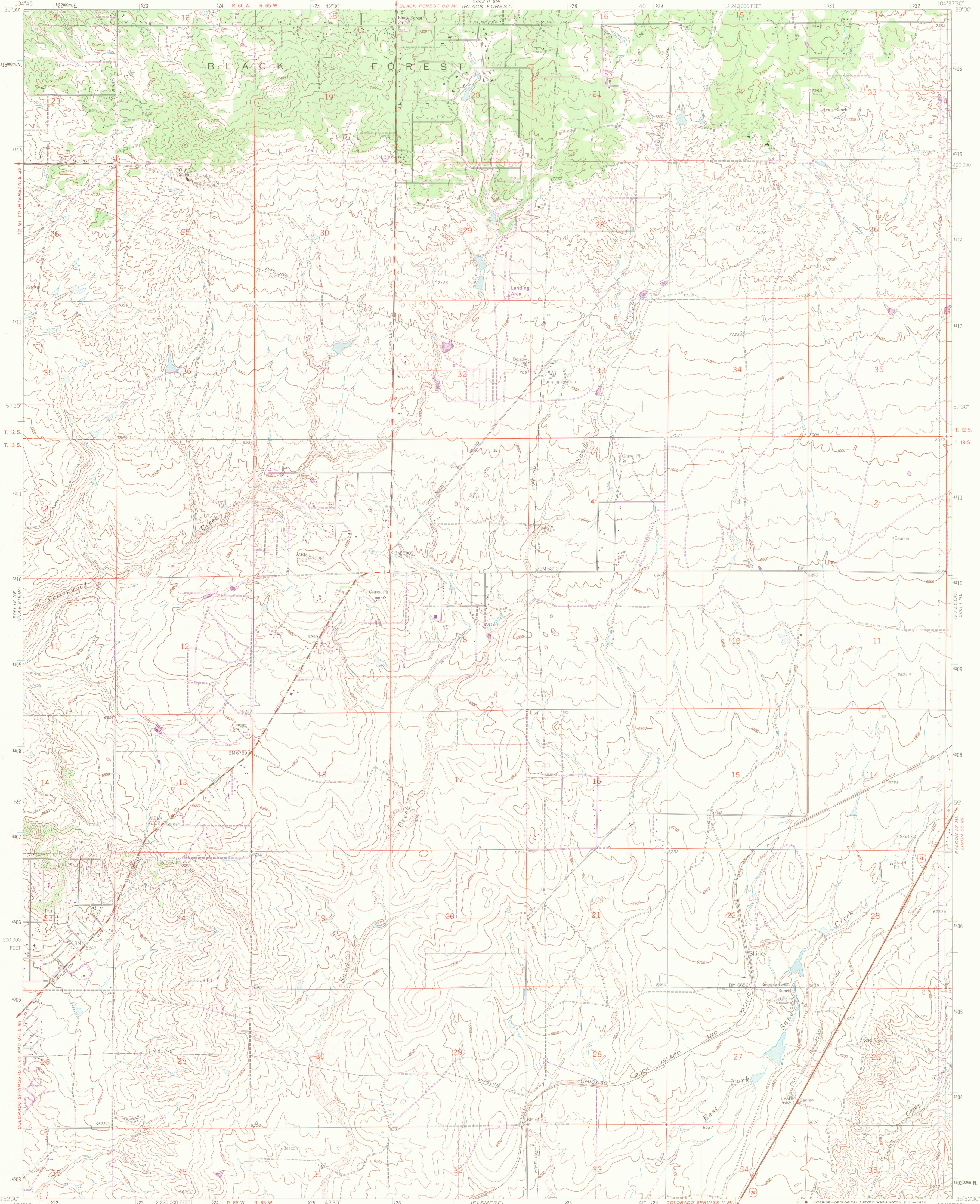
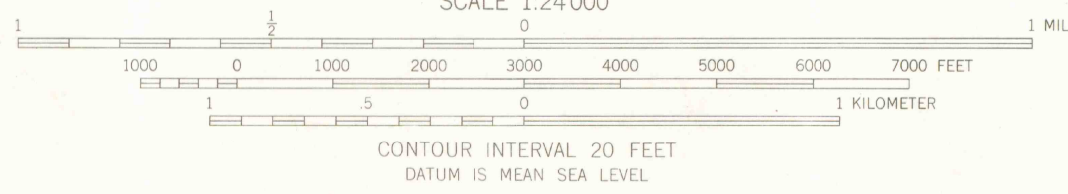


SUPERSEDED



Mapped, edited, and published by the Geological Survey in cooperation with U. S. Corps of Engineers

Control by USGS and USC&GS
Topography by photogrammetric methods from aerial photographs taken 1947. Field checked 1948. Revised from aerial photographs taken 1960. Field checked 1961
Polyconic projection. 1927 North American datum
10,000-foot grid based on Colorado coordinate system, central zone
1000-meter Universal Transverse Mercator grid ticks, zone 13, shown in blue
Fine red dashed lines indicate selected fence lines
Revisions shown in purple compiled by the Geological Survey from aerial photographs taken 1969. This information not field checked



CONTOUR INTERVAL 20 FEET
DATUM IS MEAN SEA LEVEL



THIS MAP COMPLIES WITH NATIONAL MAP ACCURACY STANDARDS
FOR SALE BY U. S. GEOLOGICAL SURVEY, DENVER, COLORADO 80225, OR WASHINGTON, D. C. 20242
A FOLDER DESCRIBING TOPOGRAPHIC MAPS AND SYMBOLS IS AVAILABLE ON REQUEST

FALCON NW, COLO.
NW/4 FALCON 15 QUADRANGLE
N3852.5-W10437.5/7.5
1961
PHOTO REVERSED 1969
AMS 5061 I NW-SERIES V877

SUPERSEDED

OFFICE COPY
LIBRARY USE ONLY