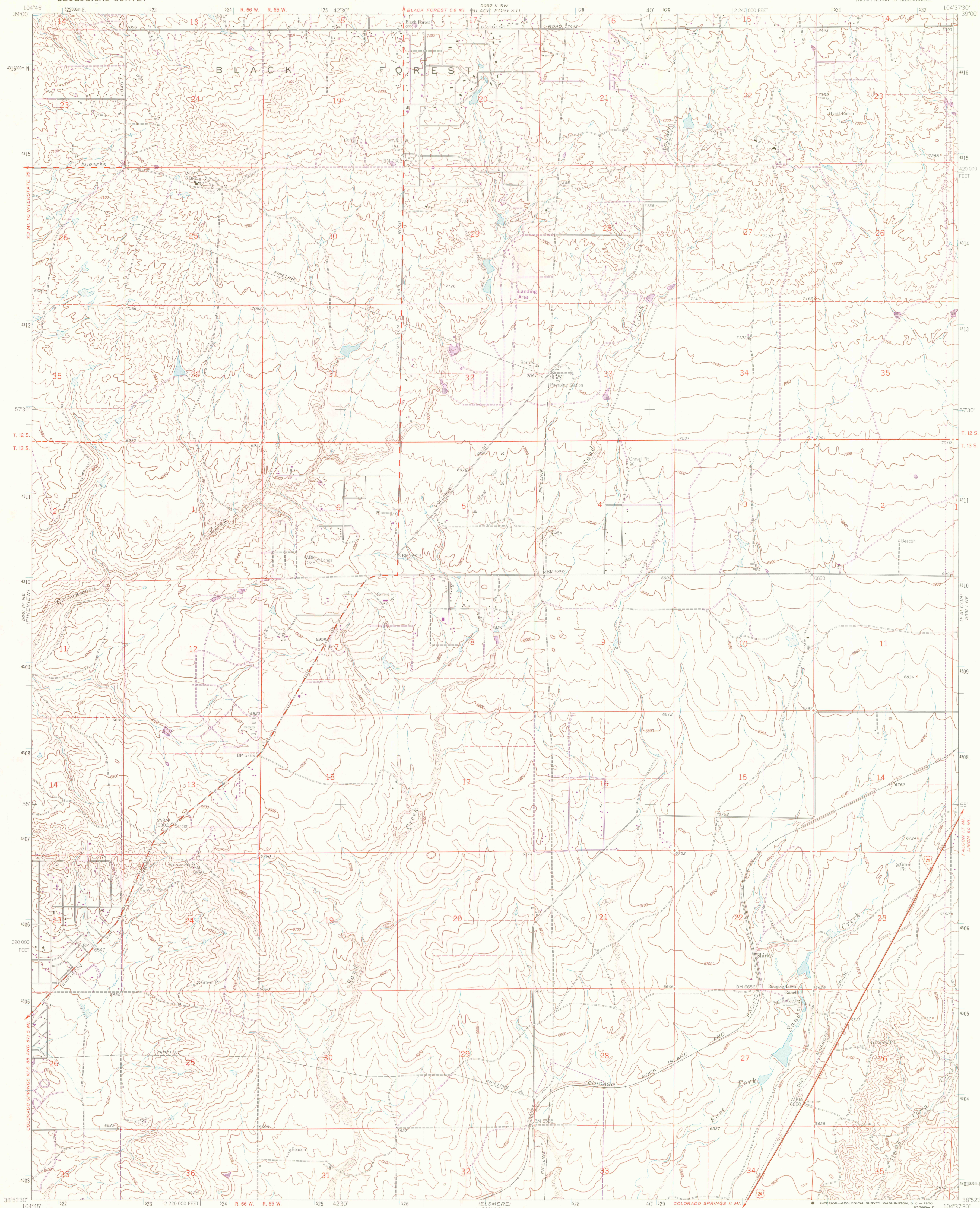


UNITED STATES
DEPARTMENT OF THE INTERIOR
GEOLOGICAL SURVEY

FALCON NW QUADRANGLE
COLORADO-EL PASO CO.
7.5 MINUTE SERIES (TOPOGRAPHIC)
NW/4 FALCON 15 QUADRANGLE



Mapped, edited, and published by the Geological Survey
in cooperation with U. S. Corps of Engineers

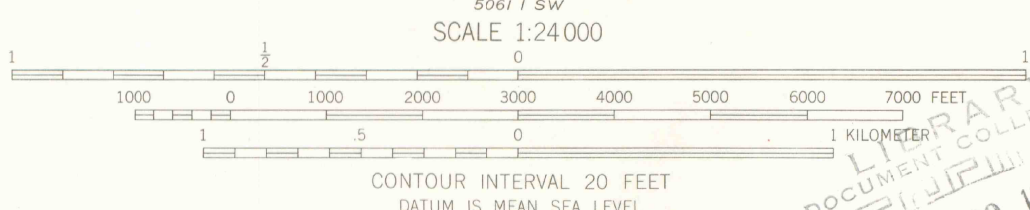
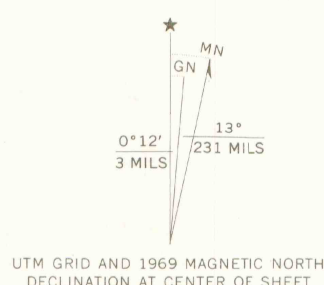
Control by USGS and USC&GS

Topography by photogrammetric methods from aerial photographs
taken 1947. Field checked 1948. Revised from aerial
photographs taken 1960. Field checked 1961

Polyconic projection. 1927 North American datum
10,000-foot grid based on Colorado coordinate system, central zone
1000-meter Universal Transverse Mercator grid ticks,
zone 13, shown in blue

Fine red dashed lines indicate selected fence lines

Revisions shown in purple compiled by the Geological Survey from
aerial photographs taken 1969. This information not field checked



THIS MAP COMPLIES WITH NATIONAL MAP ACCURACY STANDARDS
FOR SALE BY U. S. GEOLOGICAL SURVEY, DENVER, COLORADO 80225, OR WASHINGTON, D. C. 20242
A FOLDER DESCRIBING TOPOGRAPHIC MAPS AND SYMBOLS IS AVAILABLE ON REQUEST



ROAD CLASSIFICATION
Heavy-duty ——— Light-duty ———
Medium-duty ——— Unimproved dirt ———
U.S. Route

FALCON NW, COLO.
NW/4 FALCON 15 QUADRANGLE
N3852.5-W10437.5/7.5

1961
PHOTO REVISSED 1969
AMS 5061 1 NW-SERIES V877

G-3700
CI
un3