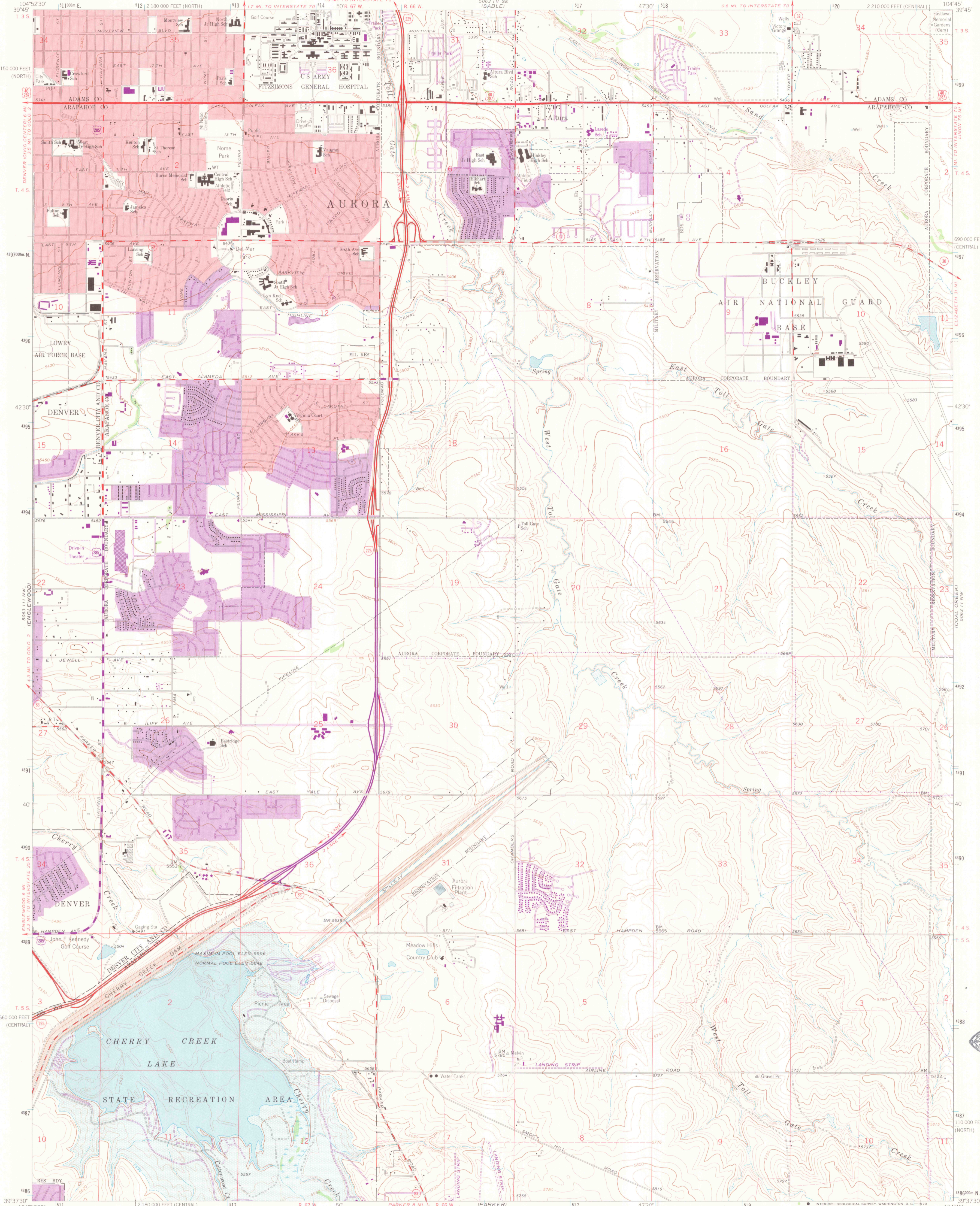


UNITED STATES
DEPARTMENT OF THE INTERIOR
GEOLOGICAL SURVEY

FITZSIMONS QUADRANGLE
COLORADO
7.5 MINUTE SERIES (TOPOGRAPHIC)



Mapped, edited, and published by the Geological Survey

Control by USGS and US&GS

Topography by photogrammetric methods from aerial photographs taken 1964. Field checked 1965. Supersedes map dated 1957

Polyconic projection. 1927 North American datum. 10,000-foot grids based on Colorado coordinate system, central and north zones

1000-meter Universal Transverse Mercator grid ticks, zone 13, shown in blue

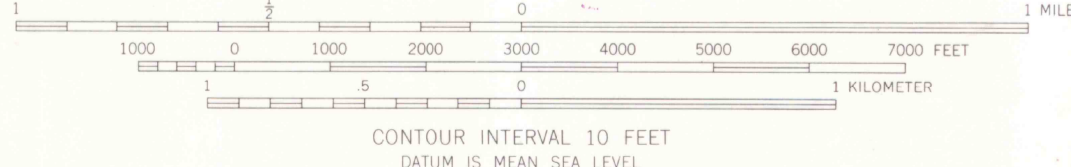
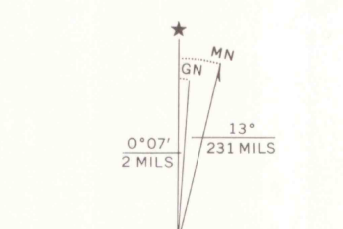
Red tint indicates areas in which only landmark buildings are shown

Fine red dashed lines indicate selected fence lines

Areas covered by dashed light-blue pattern are subject to controlled inundation

Revisions shown in purple compiled from aerial photographs taken 1971. This information not field checked

Purple tint indicates extension of urban areas



ROAD CLASSIFICATION

Heavy-duty	Light-duty
Medium-duty	Unimproved dirt
Interstate Route	U.S. Route
	State Route

THIS MAP COMPLIES WITH NATIONAL MAP ACCURACY STANDARDS
FOR SALE BY U.S. GEOLOGICAL SURVEY, DENVER, COLORADO 80225, OR WASHINGTON, D. C. 20242
A FOLDER DESCRIBING TOPOGRAPHIC MAPS AND SYMBOLS IS AVAILABLE ON REQUEST

FITZSIMONS, COLO.
N3937.5-W10445.7/5

1965
PHOTOREVISED 1971
AMS 5063 111 NE-SERIES V877

JAN 18 1979
MAP ROOM
ARTHUR LAKES LIBRARY
OFFICE COPY

LIBRARY USE