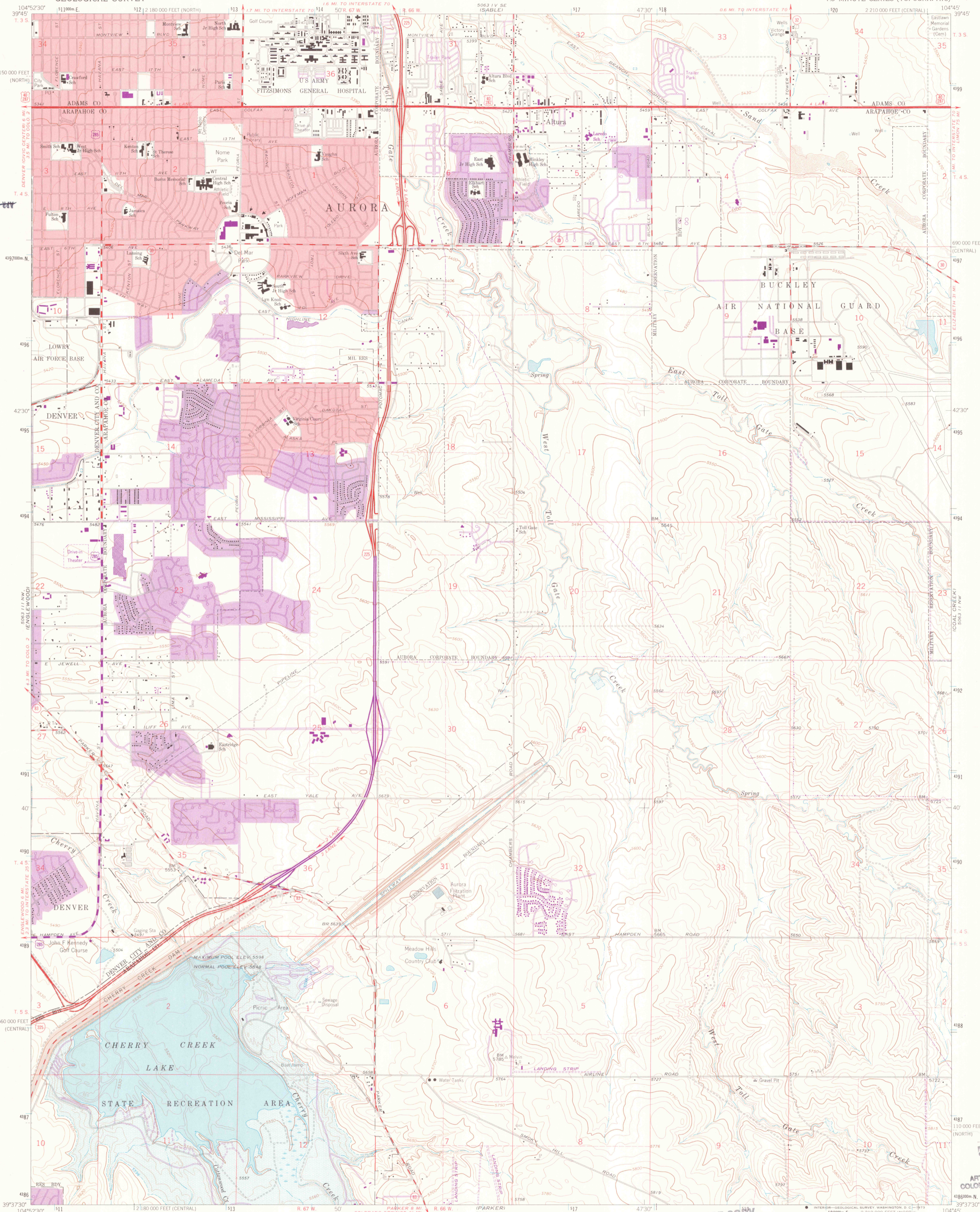


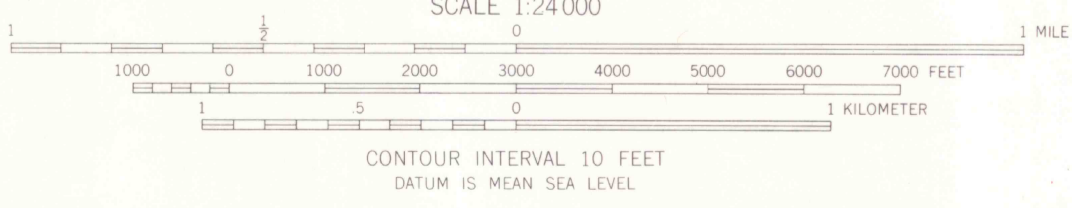
UNITED STATES
DEPARTMENT OF THE INTERIOR
GEOLOGICAL SURVEY

FITZSIMONS QUADRANGLE
COLORADO
7.5 MINUTE SERIES (TOPOGRAPHIC)



Mapped, edited, and published by the Geological Survey

- Control by USGS and USC&GS
- Topography by photogrammetric methods from aerial photographs taken 1964. Field checked 1965. Supersedes map dated 1957
- Polyconic projection. 1927 North American datum. 10,000-foot grids based on Colorado coordinate system, central and north zones
- 1000-meter Universal Transverse Mercator grid ticks, zone 13, shown in blue
- Red tint indicates areas in which only landmark buildings are shown
- Fine red dashed lines indicate selected fence lines
- Areas covered by dashed light blue pattern are subject to controlled inundation
- Revisions shown in purple compiled from aerial photographs taken 1971. This information not field checked
- Purple tint indicates extension of urban areas



OFFICE COPY
LIBRARY USE ONLY

ROAD CLASSIFICATION

| | |
|------------------|-----------------|
| Heavy-duty | Light-duty |
| Medium-duty | Unimproved dirt |
| Interstate Route | U.S. Route |
| | State Route |

LIBRARY DOCUMENT COLLECTION
SEP 5 1973
UNIVERSITY OF WYOMING
LARAMIE

FITZSIMONS, COLO.
N3937 5 - W10445 7 5
1965
PHOTOREVISED 1971
AMS 5063 111 NE-SERIES V877

JUL 06 2000
MAP ROOM
ARTHUR LAKES LIBRARY
COLORADO SCHOOL OF MINES
637 00
524
364
wfo