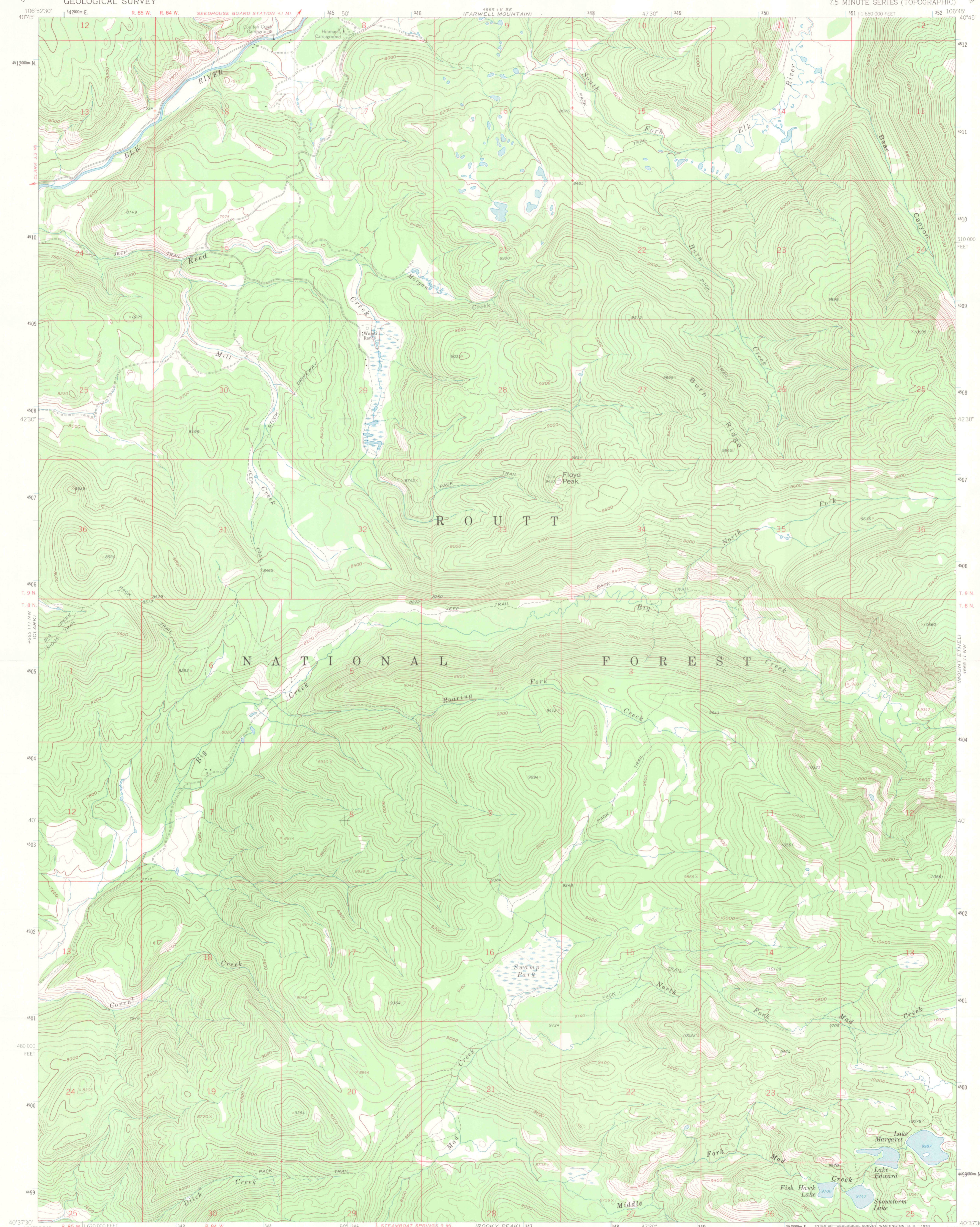


SEP 21 1994
MAP ROOM
ARTHUR LAKES LIBRARY

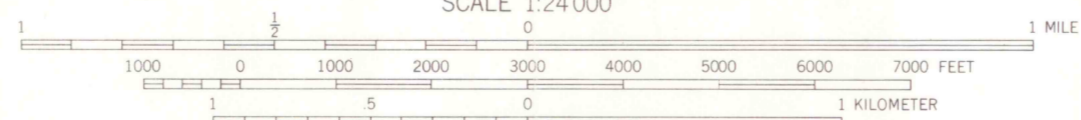
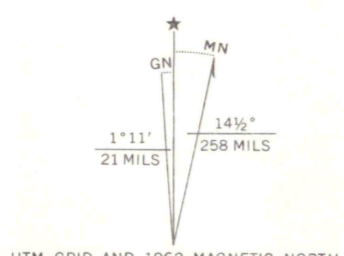


Mapped, edited, and published by the Geological Survey as part of the Department of the Interior program for the development of the Missouri River Basin

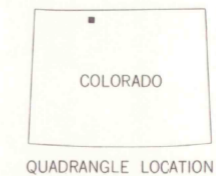
Control by USGS and USC&GS

Topography by photogrammetric methods from aerial photographs taken 1957-1958. Field checked 1962

Polycyclic projection 1927 North American datum 10,000-foot grid based on Colorado coordinate system, north zone 1000 meter Universal Transverse Mercator grid ticks, zone 13, shown in blue



CONTOUR INTERVAL 40 FEET
DOTTED LINES REPRESENT 20 FOOT CONTOURS
DATUM IS MEAN SEA LEVEL



ROAD CLASSIFICATION
Light-duty ———— Unimproved dirt - - - - -

FLOYD PEAK, COLO.
N4037 5-W10645/7.5

1962
AMS 4665 111 NE-SERIES V877

THIS MAP COMPLIES WITH NATIONAL MAP ACCURACY STANDARDS
FOR SALE BY U.S. GEOLOGICAL SURVEY, DENVER, COLORADO 80225, OR WASHINGTON, D. C. 20242
A FOLDER DESCRIBING TOPOGRAPHIC MAPS AND SYMBOLS IS AVAILABLE ON REQUEST



OFFICE COPY
BUFFALO PASS
03700
024
04
MAP ROOM
01
02
03
04
05
U5
FLOYD PEAK
1962
C12