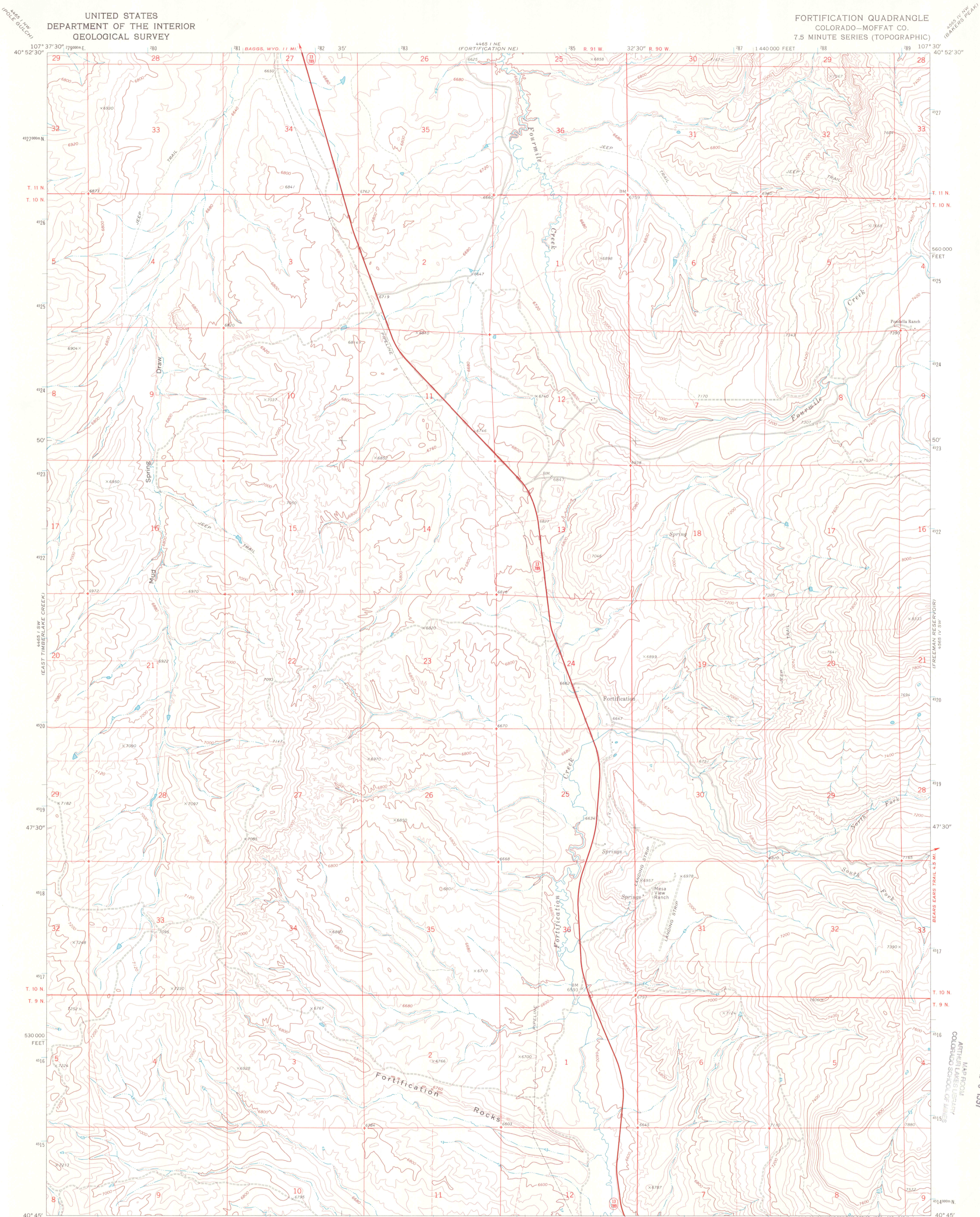
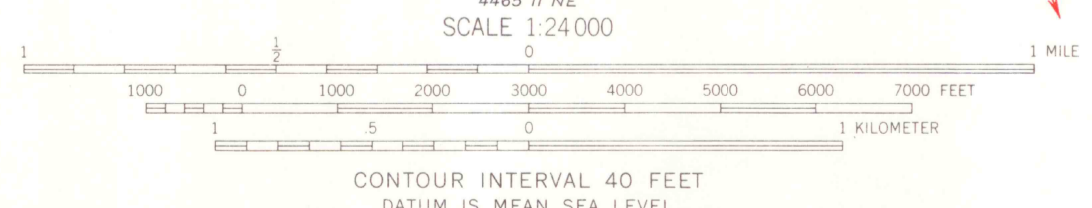
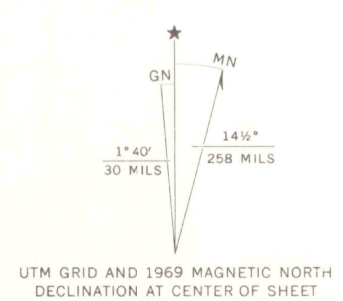


UNITED STATES  
DEPARTMENT OF THE INTERIOR  
GEOLOGICAL SURVEY

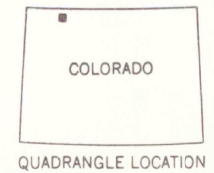
FORTIFICATION QUADRANGLE  
COLORADO—MOFFAT CO.  
7.5 MINUTE SERIES (TOPOGRAPHIC)



Mapped, edited, and published by the Geological Survey  
Control by USGS and USC&GS  
Topography by photogrammetric methods from aerial  
photographs taken 1968. Field checked 1969  
Polyconic projection. 1927 North American datum  
10,000-foot grid based on Colorado coordinate system,  
north zone  
1000-meter Universal Transverse Mercator grid ticks,  
zone 13, shown in blue  
Fine red dashed lines indicate selected fence lines



CONTOUR INTERVAL 40 FEET  
DATUM IS MEAN SEA LEVEL



ROAD CLASSIFICATION  
Primary highway, all weather, Light duty road, all weather,  
hard surface improved surface  
Unimproved road, fair or dry  
weather  
State Route

THIS MAP COMPLIES WITH NATIONAL MAP ACCURACY STANDARDS  
FOR SALE BY U. S. GEOLOGICAL SURVEY, DENVER, COLORADO 80225, OR WASHINGTON, D. C. 20242  
A FOLDER DESCRIBING TOPOGRAPHIC MAPS AND SYMBOLS IS AVAILABLE ON REQUEST



FORTIFICATION, COLO.  
N4045—W10730/7.5  
1969  
AMS 4465 I SE—SERIES B877

Aug 20 1997  
MAP ROOM  
ARTHUR LAMES LIBRARY  
COLORADO SCHOOL OF MINES  
LIBRARY USE ONLY  
G 3701  
C222  
s24  
05