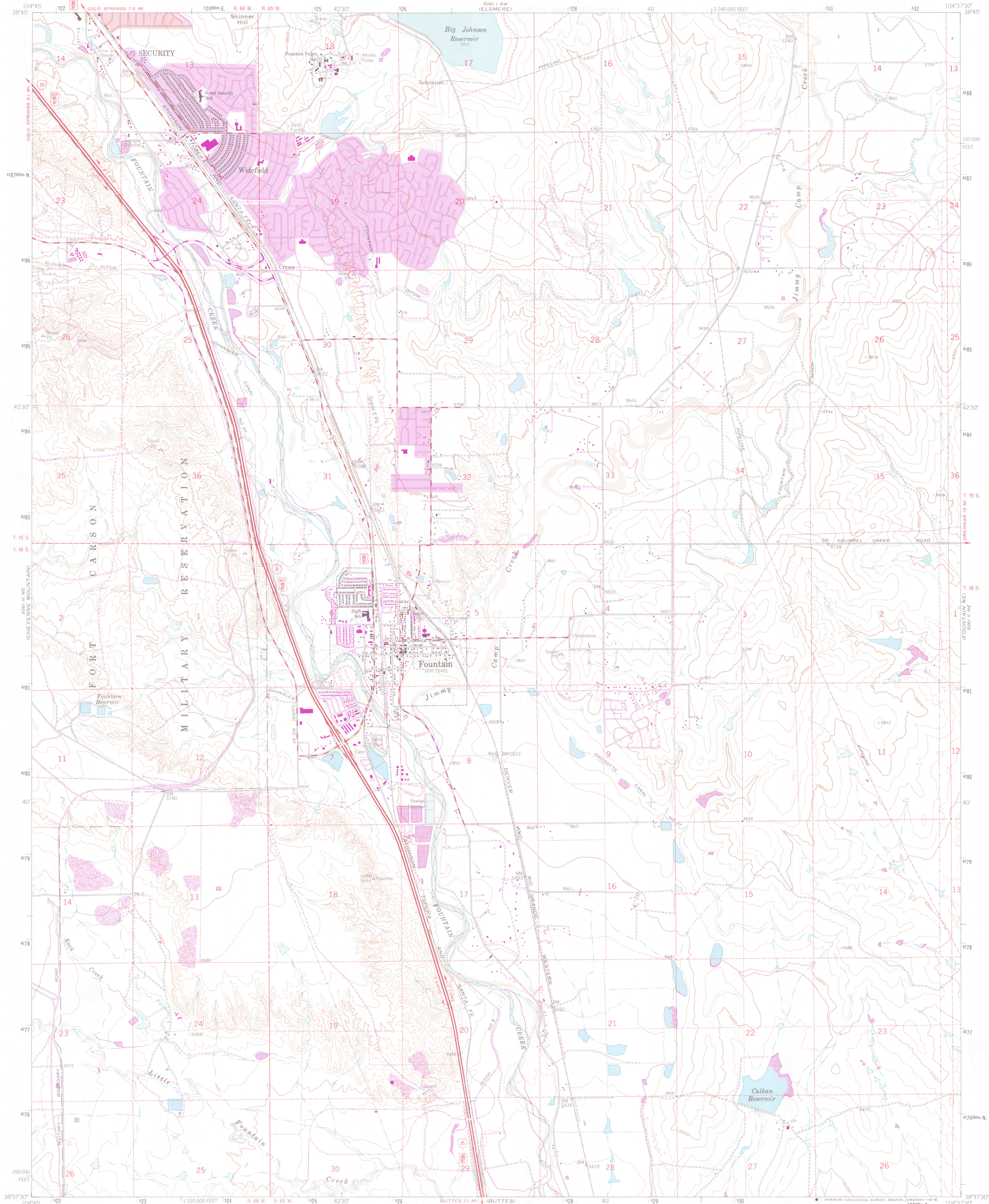


UNITED STATES  
DEPARTMENT OF THE INTERIOR  
GEOLOGICAL SURVEY

FOUNTAIN QUADRANGLE  
COLORADO-EL PASO CO.  
7.5 MINUTE SERIES (TOPOGRAPHIC)

5061 (S. BUFFS)  
CORRAL BLUFFS  
copy 2  
GEOLOGY



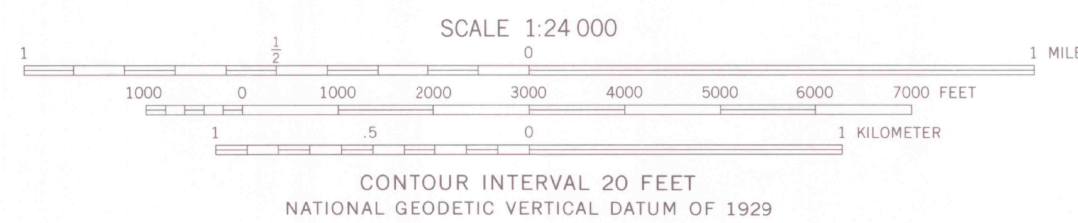
Mapped, edited, and published by the Geological Survey  
in cooperation with the Corps of Engineers

Control by USGS and NOS/NOAA  
Topography by photogrammetric methods from aerial photographs  
taken 1947. Field checked 1948. Revised from aerial  
photographs taken 1960. Field checked 1961

Polyconic projection. 1927 North American datum  
10,000-foot grid based on Colorado coordinate system, central zone  
1000 meter Universal Transverse Mercator grid ticks,  
zone 13, shown in blue

Red tint indicates area in which only landmark buildings are shown  
Fine red dashed lines indicate selected fence and field lines where  
generally visible on aerial photographs. This information is unchecked

Revisions shown in purple compiled from aerial photographs  
taken 1969 and 1976. This information not field checked  
Purple tint indicates extension of urban areas



ROAD CLASSIFICATION  
Heavy-duty ——— Light-duty ———  
Medium-duty ——— Unimproved dirt ———  
Interstate Route U.S. Route

TOPO CO 24000  
FOUNTAIN, COLO.

N3837.5-W10437.5/7.5

1961  
PHOTOREVISED 1969 AND 1976  
AMS 5061 II NW-SERIES V877



MAP ROOM  
ARTHUR LAKES LIBRARY  
COLORADO SCHOOL OF MINES

OFFICE COPY

GEOLOGY

LIBRARY USE OF

G 3701  
C222  
S24  
U5  
FOUNTAIN  
CO