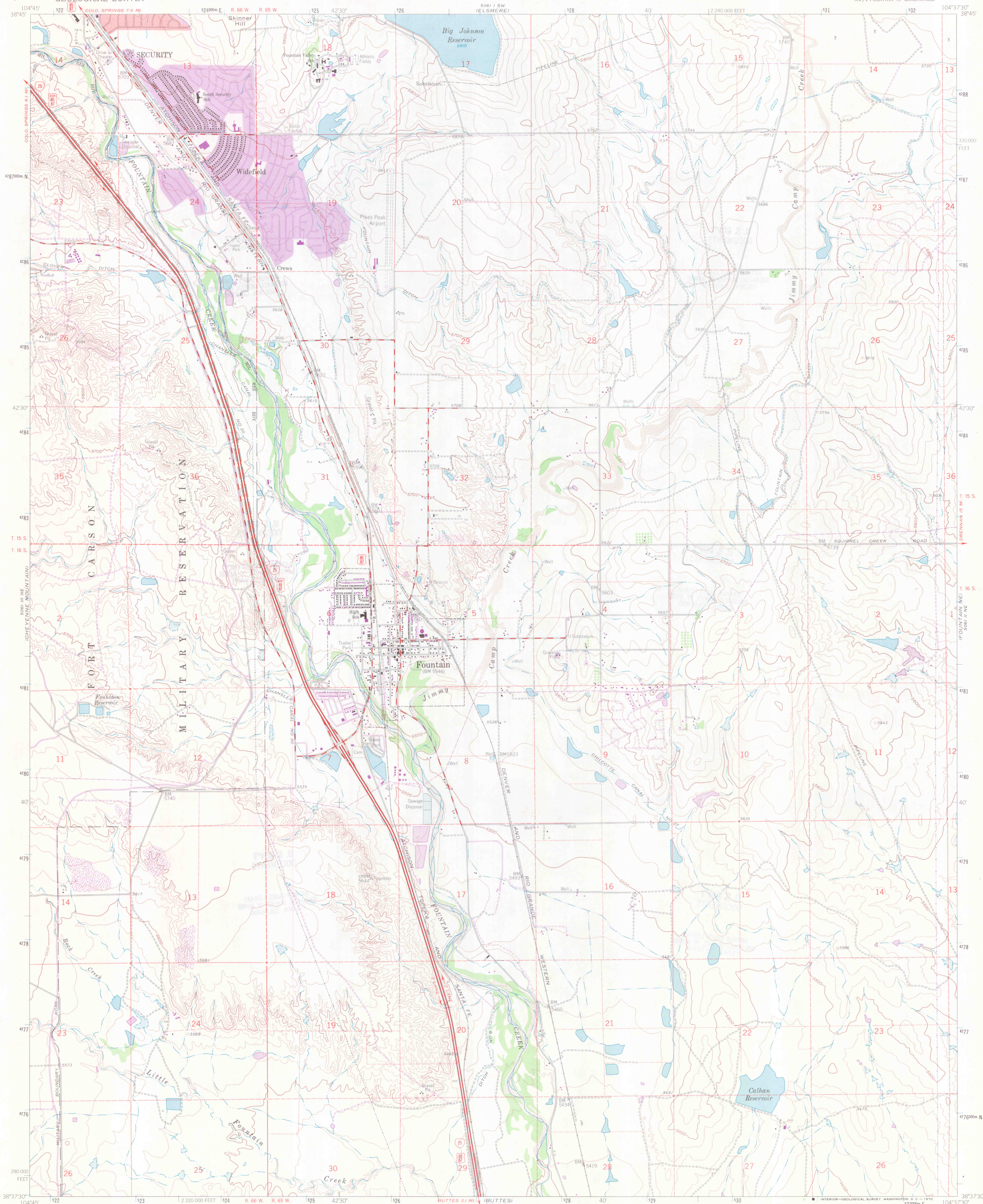


UNITED STATES
DEPARTMENT OF THE INTERIOR
GEOLOGICAL SURVEY

FOUNTAIN QUADRANGLE
COLORADO-EL PASO CO.
7.5 MINUTE SERIES (TOPOGRAPHIC)
NW/4 FOUNTAIN 15 QUADRANGLE



Mapped, edited, and published by the Geological Survey
in cooperation with the Corps of Engineers

Control by USGS and USACE

Topography by photogrammetric methods from aerial photographs
taken 1947. Field checked 1948. Revised from aerial
photographs taken 1960. Field checked 1961

Polyconic projection. 1927 North American datum
10,000-foot grid based on Colorado coordinate system, central zone
1000-meter Universal Transverse Mercator grid ticks,
zone 13, shown in blue

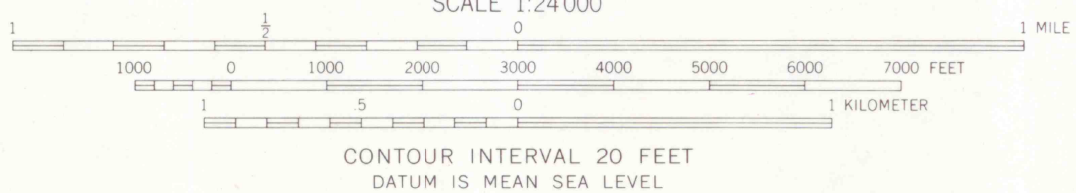
Red tint indicates area in which only landmark buildings are shown

Fine red dashed lines indicate selected fence and field lines where
generally visible on aerial photographs. This information is unchecked

Revisions shown in purple compiled from aerial
photographs taken 1969. This information not field checked

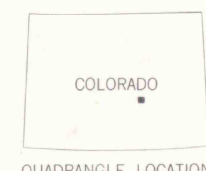
Purple tint indicates extension of urban areas

UTM GRID AND 1969 MAGNETIC NORTH
DECLINATION AT CENTER OF SHEET



THIS MAP COMPLIES WITH NATIONAL MAP ACCURACY STANDARDS

FOR SALE BY U.S. GEOLOGICAL SURVEY, DENVER, COLORADO 80225, OR WASHINGTON, D.C. 20242
A FOLDER DESCRIBING TOPOGRAPHIC MAPS AND SYMBOLS IS AVAILABLE ON REQUEST



COLORED SUPERSEDED
COLORADO SCHOOL OF MINES
LIBRARY

ROAD CLASSIFICATION

Heavy-duty ——— Light-duty ———
Medium-duty ——— Unimproved dirt ———
Interstate Route ——— U.S. Route ———

FOUNTAIN, COLO.
NW/4 FOUNTAIN 15 QUADRANGLE
N3837.5-W10437.5/7.5

1961
PHOTOREVISED 1969
AMS 5061 II NW-SERIES V877

U. S. GOV'T
DOCUMENTS

ARTHUR LAKES LIBRARY
GOLDEN, COLORADO