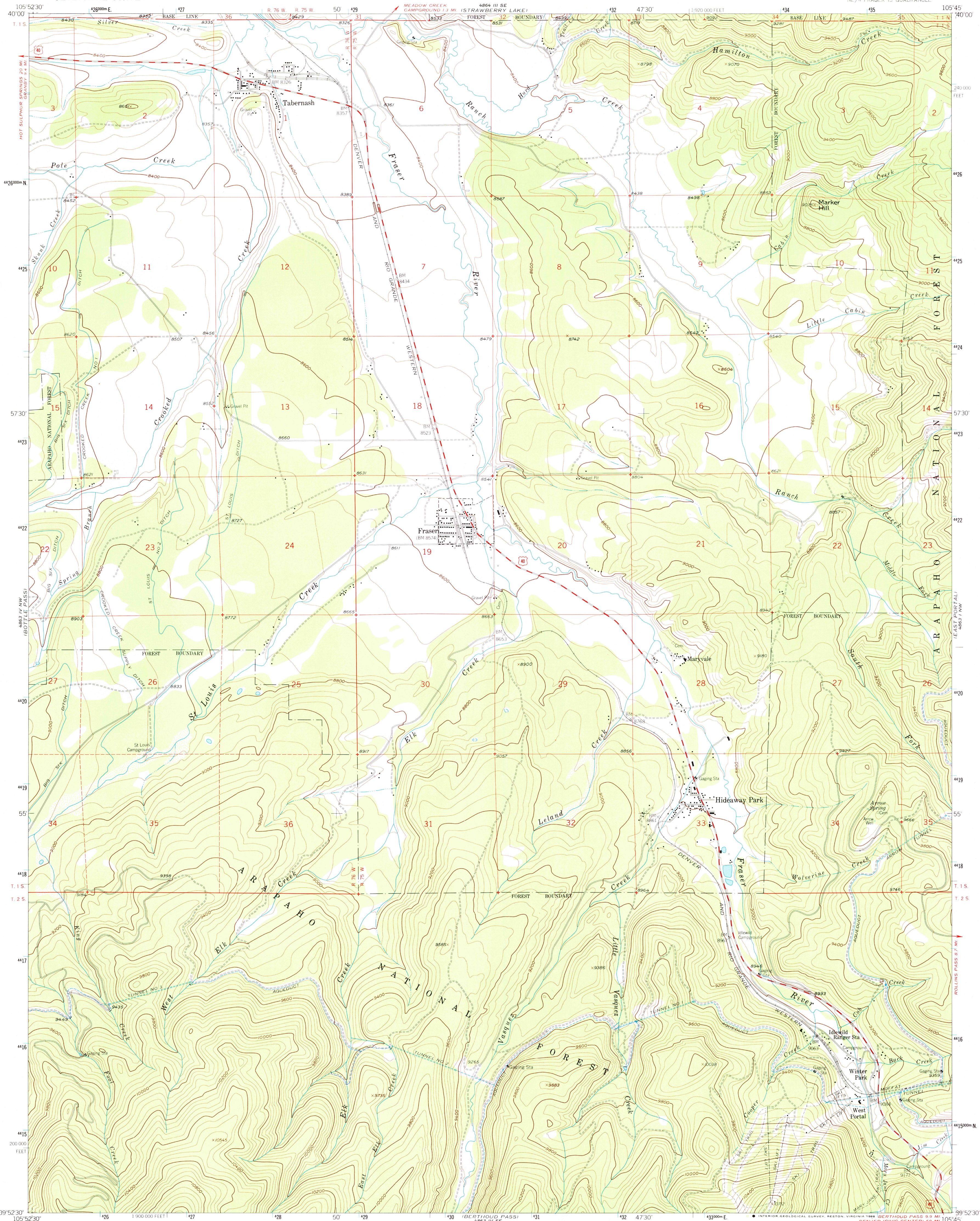


UNITED STATES
DEPARTMENT OF THE INTERIOR
GEOLOGICAL SURVEY

FRASER QUADRANGLE
COLORADO-GRAND CO
7.5 MINUTE SERIES (TOPOGRAPHIC)
NE 1/4 FRASER 15 QUADRANGLE

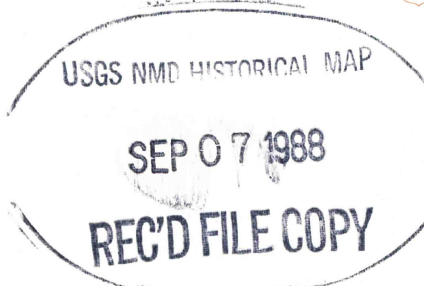
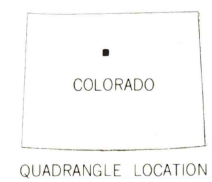


Maped, edited, and published by the Geological Survey
Control by USGS and USC&GS
Topography from aerial photographs by photogrammetric methods
Aerial photographs taken 1953. Field check 1957
Polyconic projection. 1927 North American Datum
10,000-foot grid based on Colorado coordinate system,
north zone
1000-meter Universal Transverse Mercator grid ticks,
zone 13, shown in blue
Dashed land lines indicate approximate locations
Land lines unsurveyed in T. 2 S. R. 75 and 76 W.

There may be private inholdings within the boundaries of
the National or State reservations shown on this map

THIS MAP COMPLIES WITH NATIONAL MAP ACCURACY STANDARDS
FOR SALE BY U. S. GEOLOGICAL SURVEY, DENVER, COLORADO 80225, OR RESTON, VIRGINIA 22092
A FOLDER DESCRIBING TOPOGRAPHIC MAPS AND SYMBOLS IS AVAILABLE ON REQUEST

ROAD CLASSIFICATION
Medium duty ——— Light duty ———
Unimproved dirt ———
U.S. Route



FRASER, COLO.
NE 1/4 FRASER 15 QUADRANGLE
39105-H7-TF-024
1957
DMA 4863 IV NE-SERIES V877