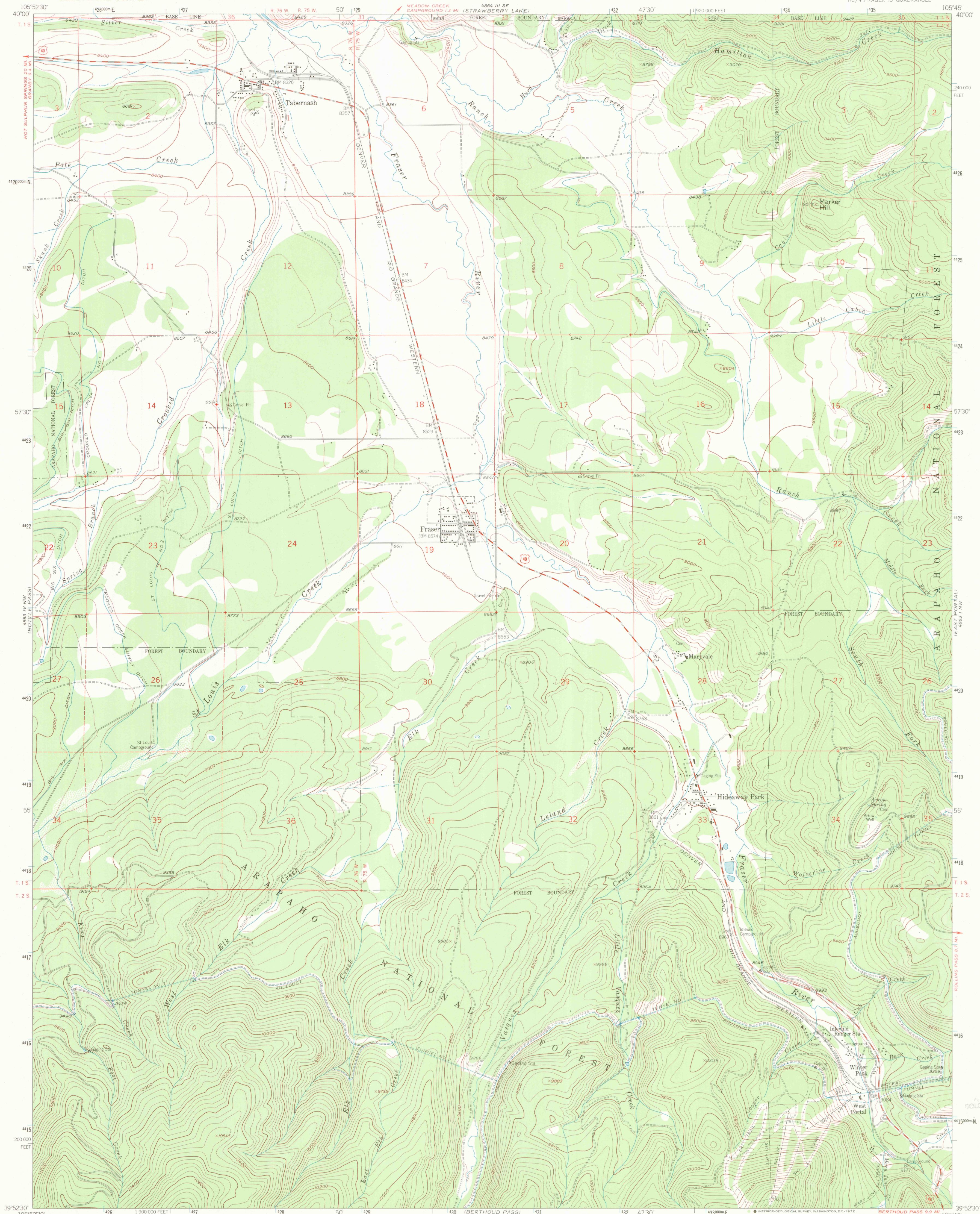
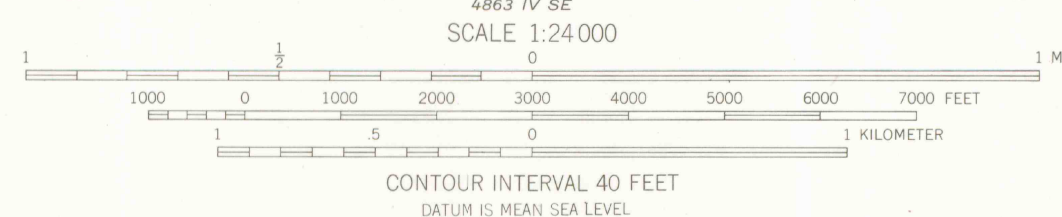
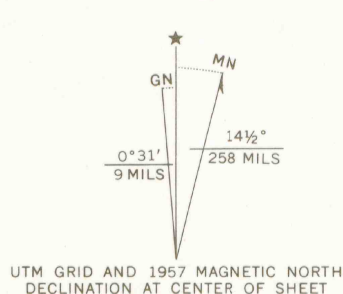


UNITED STATES
DEPARTMENT OF THE INTERIOR
GEOLOGICAL SURVEY

FRASER QUADRANGLE
COLORADO-GRAND CO.
7.5 MINUTE SERIES (TOPOGRAPHIC)
NE 1/4 FRASER 15' QUADRANGLE



Mapped, edited, and published by the Geological Survey
Control by USGS and USC&GS
Topography from aerial photographs by photogrammetric methods
Aerial photographs taken 1953. Field check 1957
Polyconic projection. 1927 North American datum
10,000-foot grid based on Colorado coordinate system,
north zone
1000-meter Universal Transverse Mercator grid ticks,
zone 13, shown in blue
Dashed land lines indicate approximate locations
Land lines unsurveyed in T. 2 S., R. 75 W. and 76 W.



ROAD CLASSIFICATION
Medium-duty ——— Light-duty ———
Unimproved dirt ———
U.S. Route

THIS MAP COMPLIES WITH NATIONAL MAP ACCURACY STANDARDS
FOR SALE BY U.S. GEOLOGICAL SURVEY, DENVER, COLORADO 80225, OR WASHINGTON, D. C. 20242
A FOLDER DESCRIBING TOPOGRAPHIC MAPS AND SYMBOLS IS AVAILABLE ON REQUEST

FRASER, COLO.
NE 1/4 FRASER 15' QUADRANGLE
N3952.5-W10545/7.5

1957

AMS 4863 IV NE-SERIES V877

OFFICE COPY
LIBRARY USE ONLY

SEP 29 2004

GEORGE W. BROWN
GOLDEN SCHOOL OF MINES

G 3700
s24
.G4
MAP ROOM