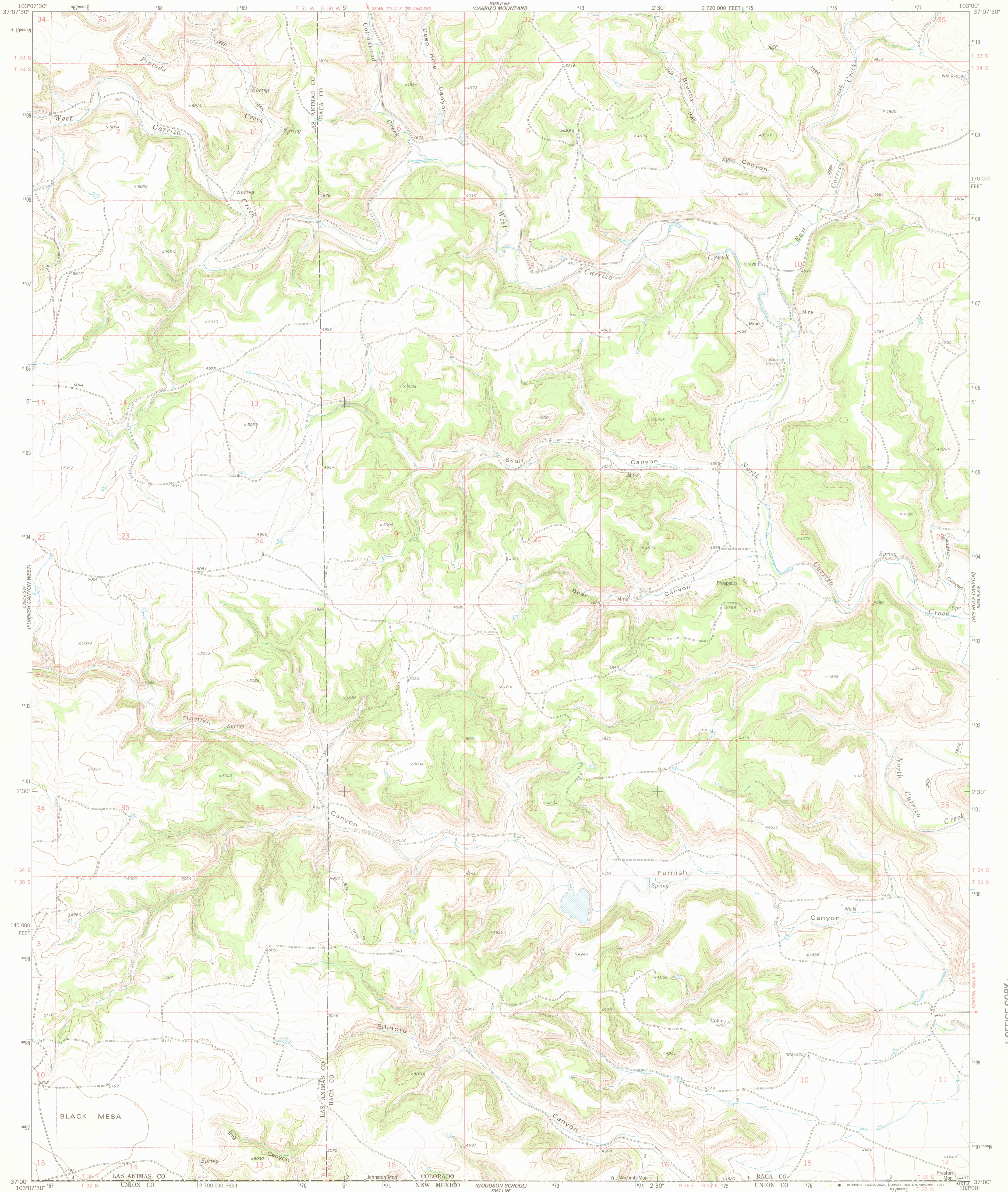
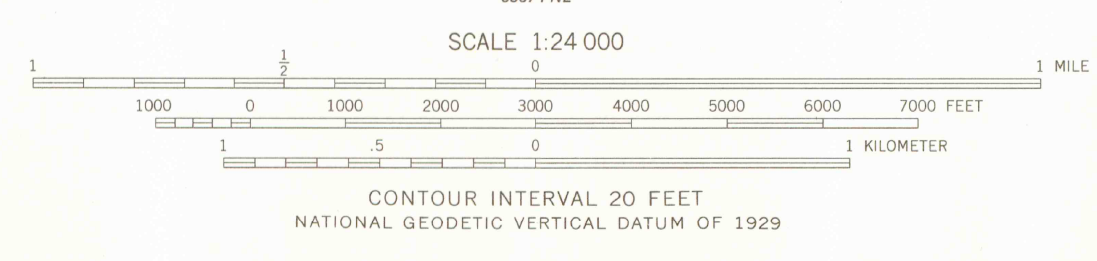
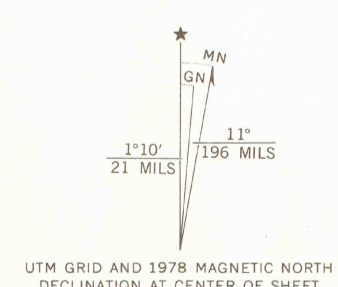


UNITED STATES  
DEPARTMENT OF THE INTERIOR  
GEOLOGICAL SURVEY

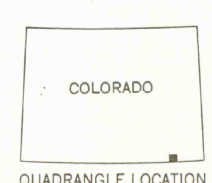
FURNISH CANYON EAST QUADRANGLE  
COLORADO—NEW MEXICO  
7.5 MINUTE SERIES (TOPOGRAPHIC)



Mapped, edited, and published by the Geological Survey  
Control by USGS and NOS/NOAA  
Topography by photogrammetric methods from aerial photographs taken 1973. Field checked 1974. Map edited 1978  
Projection and 10,000-foot grid ticks. Colorado coordinate system, south zone (Lambert conformal conic)  
1000-meter Universal Transverse Mercator grid ticks, zone 13, shown in blue. 1927 North American datum  
Fine red dashed lines indicate selected fence lines



LIBRARY USE ONLY



ROAD CLASSIFICATION

Primary highway, hard surface	Light-duty road, hard or improved surface
Secondary highway, hard surface	Unimproved road
Interstate Route	U. S. Route
	State Route

FURNISH CANYON EAST, COLO.—N. MEX.  
N3700—W10300/7.5

THIS MAP COMPLIES WITH NATIONAL MAP ACCURACY STANDARDS  
FOR SALE BY U. S. GEOLOGICAL SURVEY, DENVER, COLORADO 80225, OR RESTON, VIRGINIA 22092  
A FOLDER DESCRIBING TOPOGRAPHIC MAPS AND SYMBOLS IS AVAILABLE ON REQUEST

1978  
AMS 5358 II SE—SERIES V877

FEB 2 2 1979  
MAP ROOM  
ARTHUR LAKES LIBRARY

OFFICE COPY