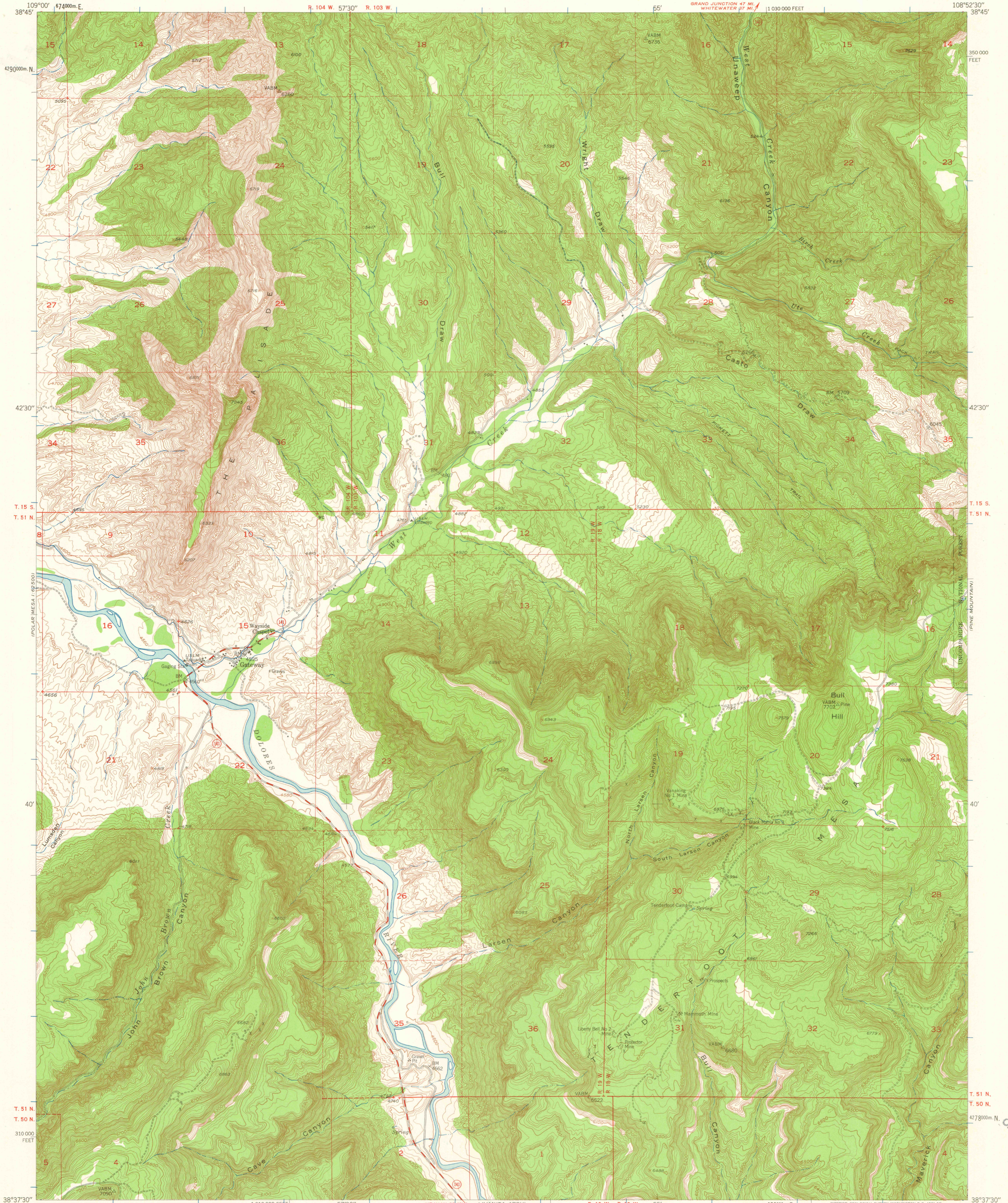
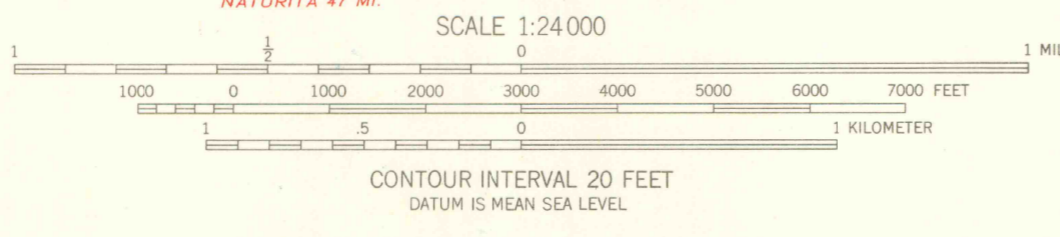
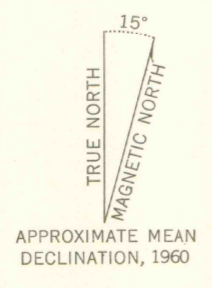


UNITED STATES
DEPARTMENT OF THE INTERIOR
GEOLOGICAL SURVEY

GATEWAY QUADRANGLE
COLORADO—MESA CO.
7.5 MINUTE SERIES (TOPOGRAPHIC)
NW/4 GATEWAY 15' QUADRANGLE



Maped, edited, and published by the Geological Survey
Control by USGS and USC&GS
Topography from aerial photographs by photogrammetric methods
Aerial photographs taken 1947. Revised by planetable surveys 1960
Polyconic projection, 1927 North American datum
10,000-foot grid based on Colorado coordinate system,
central zone
1000-meter Universal Transverse Mercator grid ticks,
zone 12, shown in blue
Dashed land lines indicate approximate locations
Land lines unsurveyed in part of T. 50 N.-Rs. 18 and 19 W.
and T. 51 N.-Rs. 18 and 19 W.



THIS MAP COMPLIES WITH NATIONAL MAP ACCURACY STANDARDS
FOR SALE BY U.S. GEOLOGICAL SURVEY, DENVER 25, COLORADO OR WASHINGTON 25, D.C.
A FOLDER DESCRIBING TOPOGRAPHIC MAPS AND SYMBOLS IS AVAILABLE ON REQUEST

GATEWAY, COLO.
NW/4 GATEWAY 15' QUADRANGLE
N3837.5—W10852.5/7.5

1960

OFFICE COPY
LIBRARY USE ONLY