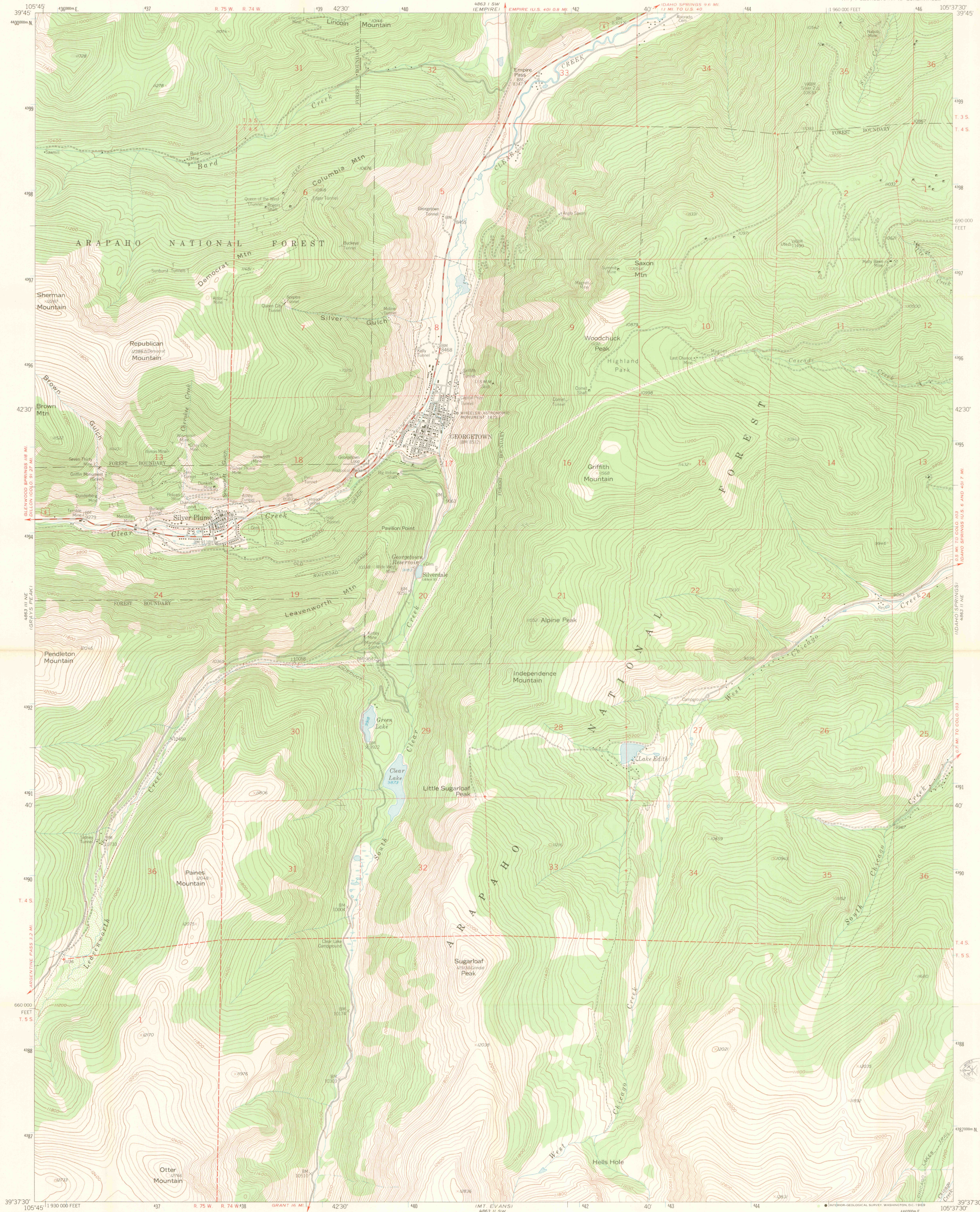
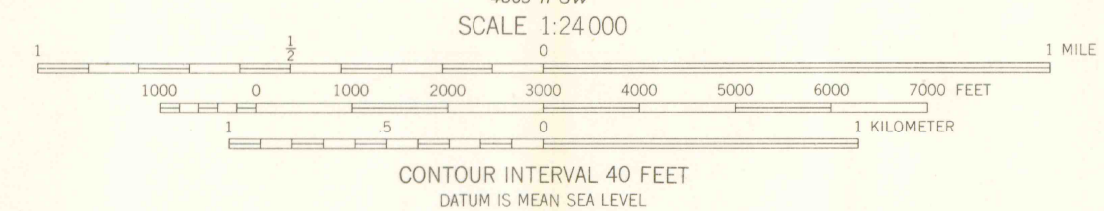
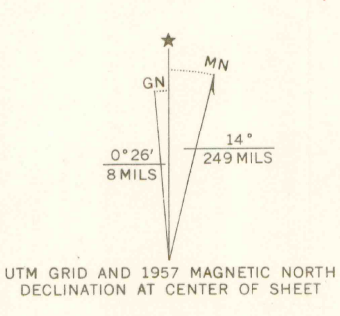


UNITED STATES
DEPARTMENT OF THE INTERIOR
GEOLOGICAL SURVEY

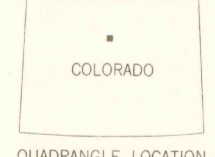
GEORGETOWN QUADRANGLE
COLORADO-CLEAR CREEK CO.
7.5 MINUTE SERIES (TOPOGRAPHIC)
NW 1/4 GEORGETOWN 15 QUADRANGLE



Mapped, edited, and published by the Geological Survey as part of the Department of the Interior program for the development of the Missouri River Basin Control by USGS and USC&GS
Topography from aerial photographs by photogrammetric methods
Aerial photographs taken 1953, Field check 1957
Polyconic projection, 1927 North American datum
10,000 foot grid based on Colorado coordinate system, central zone
1000-meter Universal Transverse Mercator grid ticks, zone 13, shown in blue
Dashed land lines indicate approximate locations
Land lines unsurveyed in T.3S.-R.75W. and in parts of T.3S.-R.74W. and T.4S.-R.75W. Land lines omitted in T.5S.-R.74 and 75 W. because of insufficient data



THIS MAP COMPLIES WITH NATIONAL MAP ACCURACY STANDARDS
FOR SALE BY U.S. GEOLOGICAL SURVEY, DENVER, COLORADO 80225, OR WASHINGTON, D.C. 20242
A FOLDER DESCRIBING TOPOGRAPHIC MAPS AND SYMBOLS IS AVAILABLE ON REQUEST



ROAD CLASSIFICATION
Medium-duty ——— Light-duty ———
Unimproved dirt ———
U.S. Route

GEORGETOWN, COLO.
NW 1/4 GEORGETOWN 15 QUADRANGLE
N3937.5-W10537.5/7.5

1957
AMS 4863 II NW—SERIES V877

OFFICE COPY
LIBRARY USE ONLY

SEP 20 2003

U.S. GEOLOGICAL SURVEY
COLORADO-CLEAR CREEK CO.

3700
74
AP ROOM