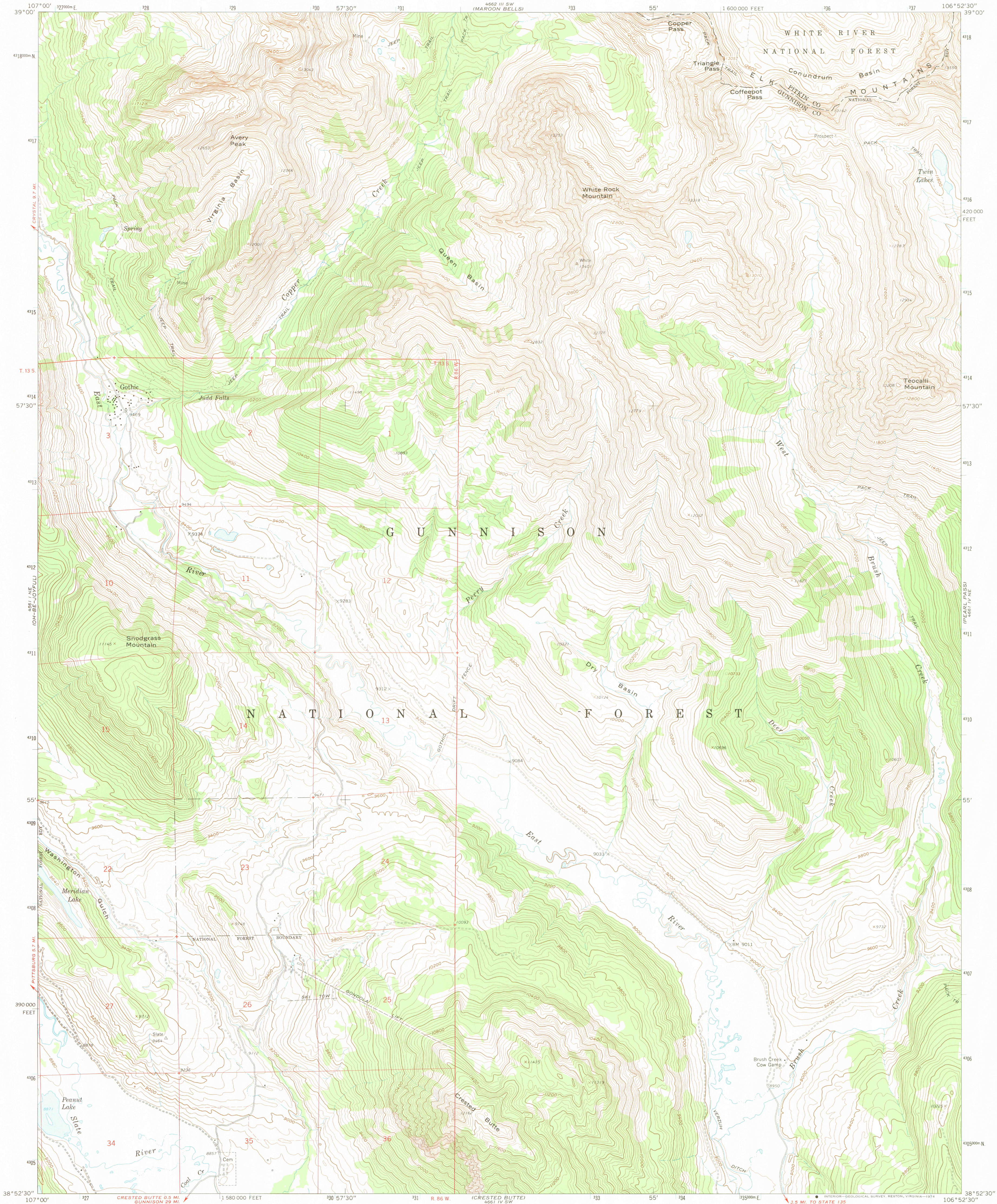
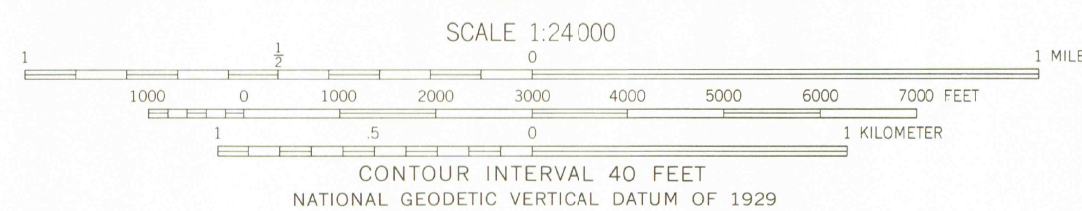
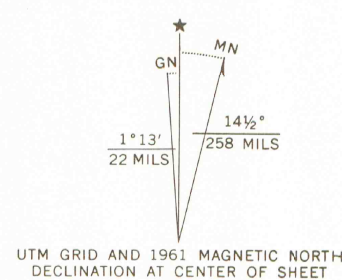


UNITED STATES  
DEPARTMENT OF THE INTERIOR  
GEOLOGICAL SURVEY

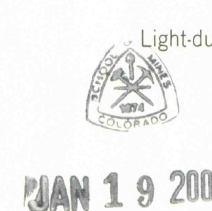
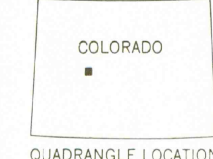
GOthic QUADRANGLE  
COLORADO  
7.5 MINUTE SERIES (TOPOGRAPHIC)  
NW/4 CRESTED BUTTE 15' QUADRANGLE



Mapped, edited, and published by the Geological Survey  
Control by USGS and USC&GS  
Topography by photogrammetric methods from aerial  
photographs taken 1958. Field checked 1961  
Polyconic projection. 1927 North American datum  
10,000-foot grid based on Colorado coordinate system, central zone  
1000-meter Universal Transverse Mercator grid ticks,  
zone 13, shown in blue  
Fine red dashed lines indicate selected fence and field lines where  
generally visible on aerial photographs. This information is unchecked  
Certain land lines are omitted because of insufficient data



THIS MAP COMPLIES WITH NATIONAL MAP ACCURACY STANDARDS  
FOR SALE BY U. S. GEOLOGICAL SURVEY, DENVER, COLORADO 80225, OR RESTON, VIRGINIA 22092  
A FOLDER DESCRIBING TOPOGRAPHIC MAPS AND SYMBOLS IS AVAILABLE ON REQUEST



JAN 19 2006

ROAD CLASSIFICATION  
Light-duty ————— Unimproved dirt - - - - -

GOthic, COLO.  
NW/4 CRESTED BUTTE 15' QUADRANGLE  
N3852.5-W10652.5/7.5

1961

AMS 4661 IV NW-SERIES V877

OFFICE COPY  
LIBRARY USE ONLY

MAP ROOM  
ARTHUR LAKES LIBRARY  
COLORADO SCHOOL OF MINES

G 3700  
s24  
.G4  
MAP ROOM