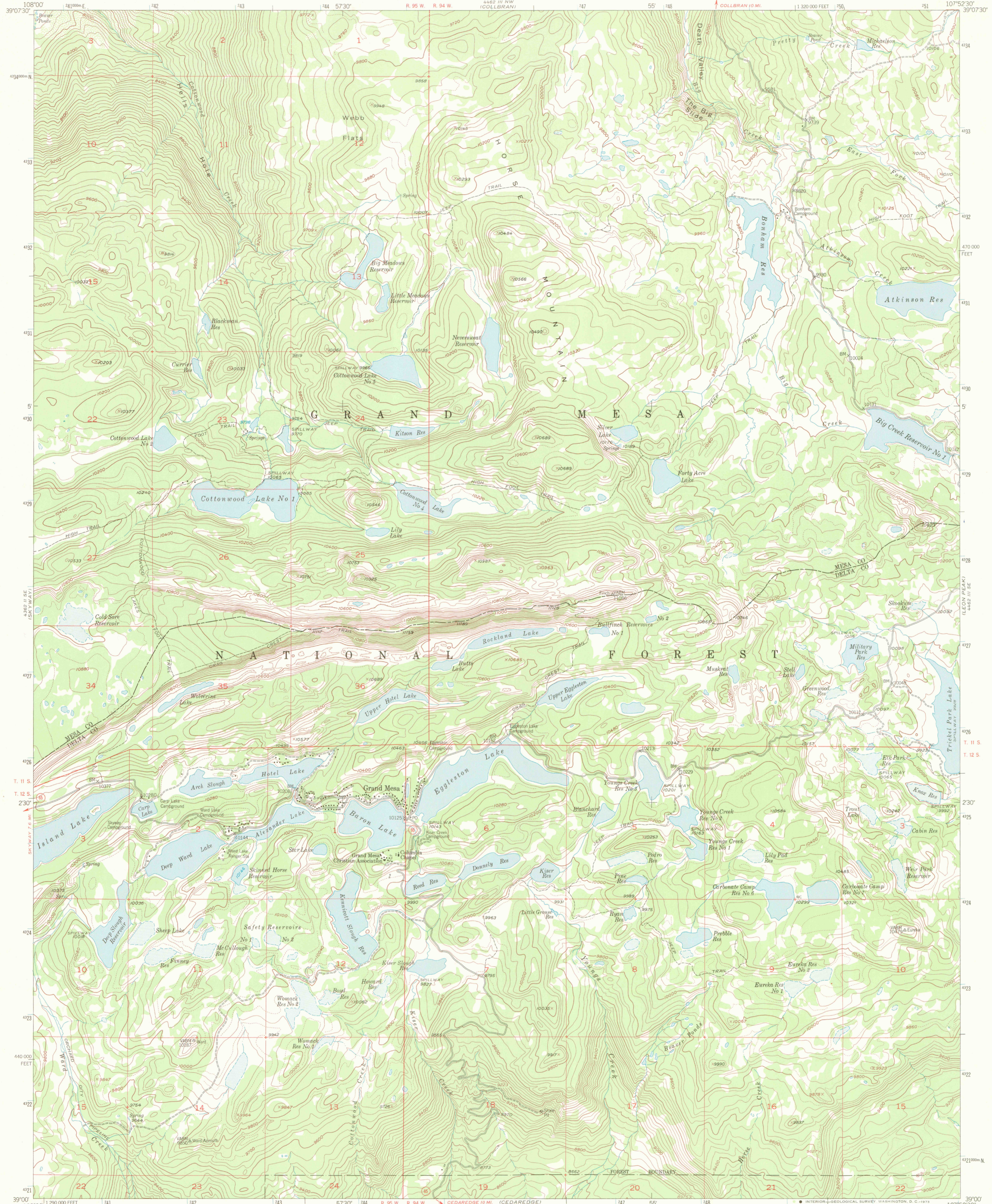
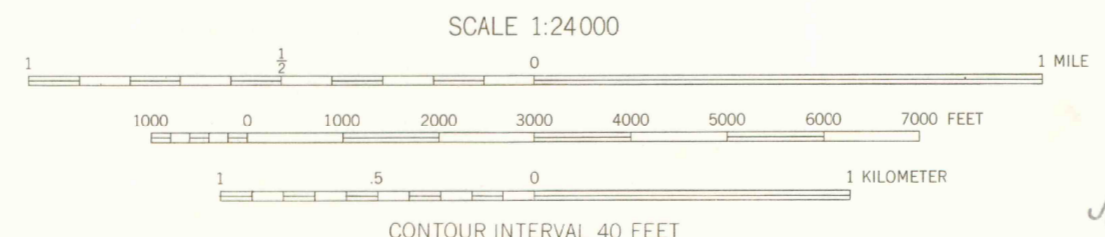
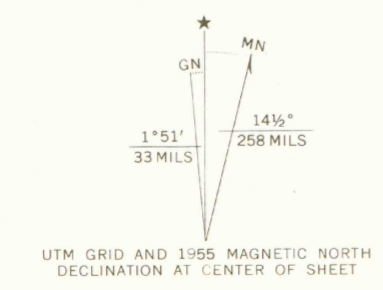


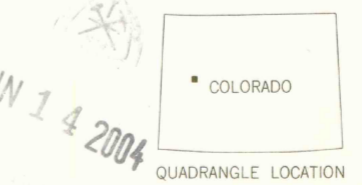
664



Maped, edited, and published by the Geological Survey  
Control by USGS and USC&GS  
Topography from aerial photographs by multiplex methods  
Aerial photographs taken 1951. Field check 1955  
Polyconic projection. 1927 North American datum  
10,000-foot grid based on Colorado coordinate system,  
central zone  
Dashed land lines indicate approximate locations  
Certain land lines omitted in T. 11 S., R. 94 W. because  
of insufficient data  
Unchecked elevations are shown in brown  
1000-meter Universal Transverse Mercator grid ticks,  
zone 13, shown in blue



SCALE 1:24 000  
CONTOUR INTERVAL 40 FEET  
DASHED LINES REPRESENT 20 FOOT CONTOURS  
DATUM IS MEAN SEA LEVEL



THIS MAP COMPLIES WITH NATIONAL MAP ACCURACY STANDARDS  
FOR SALE BY U.S. GEOLOGICAL SURVEY, DENVER, COLORADO 80225, OR WASHINGTON, D.C. 20242  
A FOLDER DESCRIBING TOPOGRAPHIC MAPS AND SYMBOLS IS AVAILABLE ON REQUEST

GRAND MESA, COLO.  
N3900-W10752.5/7.5  
1955  
AMS 4462 III SW-SERIES V877

G 3700  
S24  
.G4  
MAP ROOM

OFFICE COPY  
LIBRARY USE ONLY  
CO 199

JUN 14 2004