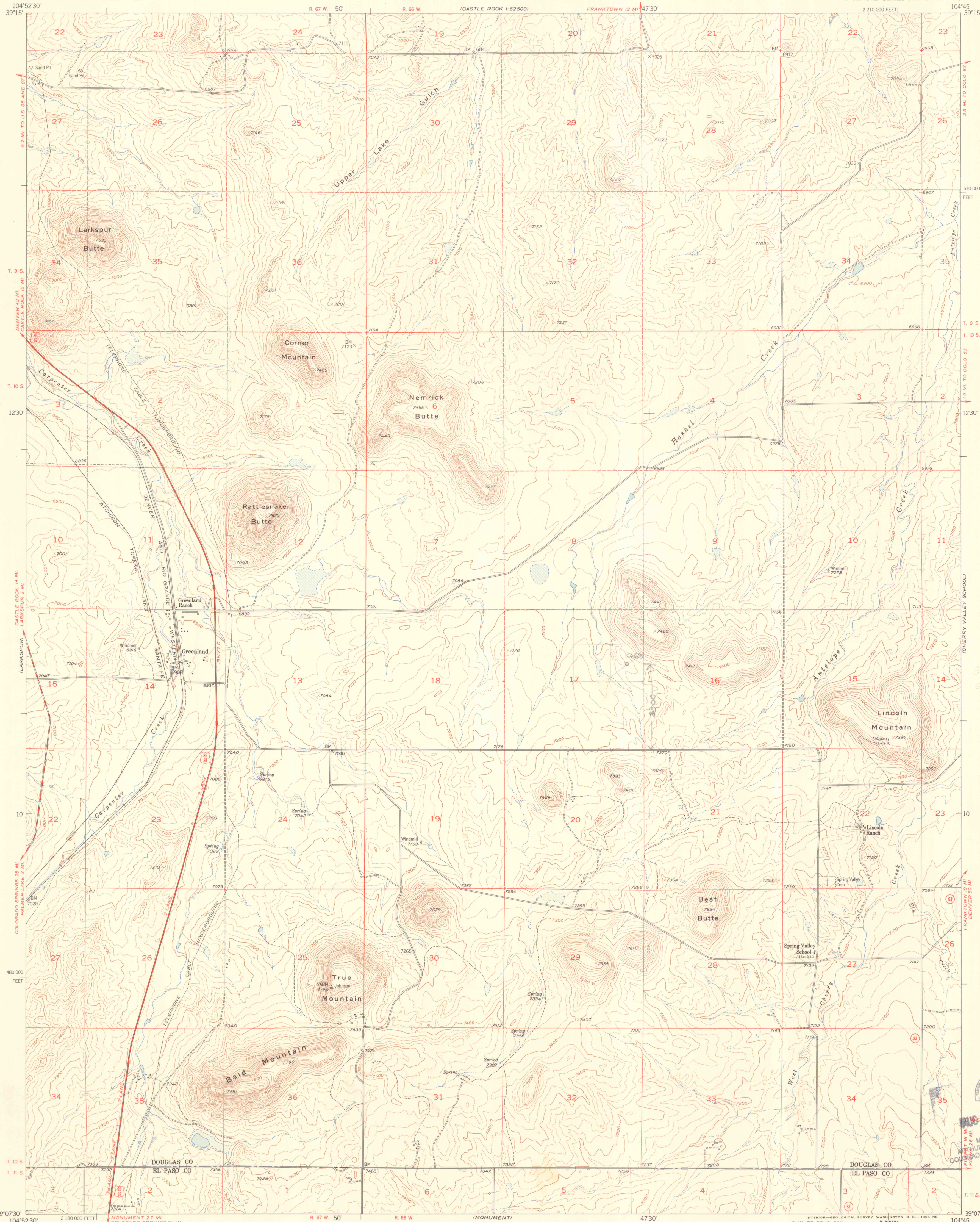
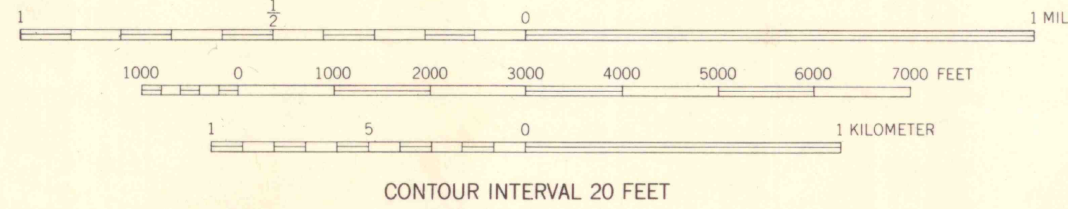
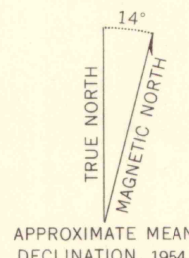


UNITED STATES  
DEPARTMENT OF THE INTERIOR  
GEOLOGICAL SURVEY

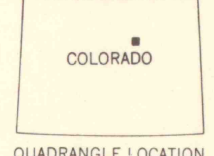
GREENLAND QUADRANGLE  
COLORADO  
7.5-MINUTE SERIES (TOPOGRAPHIC)



Maped, edited, and published by the Geological Survey  
Control by USGS and USCGS  
Topography from aerial photographs by multiplex methods  
Aerial photographs taken 1952. Field check 1954  
Polyconic projection, 1927 North American datum  
10,000-foot grid based on Colorado coordinate system,  
central zone  
Dashed land lines indicate approximate locations



CONTOUR INTERVAL 20 FEET  
DATUM IS MEAN SEA LEVEL



ROAD CLASSIFICATION  
Heavy-duty ——— Light-duty ———  
Medium-duty ——— Unimproved dirt ———  
U. S. Route ——— State Route ———

GREENLAND, COLO.  
N3907.5—W10445/7.5

1954

THIS MAP COMPLIES WITH NATIONAL MAP ACCURACY STANDARDS.  
FOR SALE BY U. S. GEOLOGICAL SURVEY, FEDERAL CENTER, DENVER, COLORADO OR WASHINGTON 25, D. C.  
A FOLDER DESCRIBING TOPOGRAPHIC MAPS AND SYMBOLS IS AVAILABLE ON REQUEST

