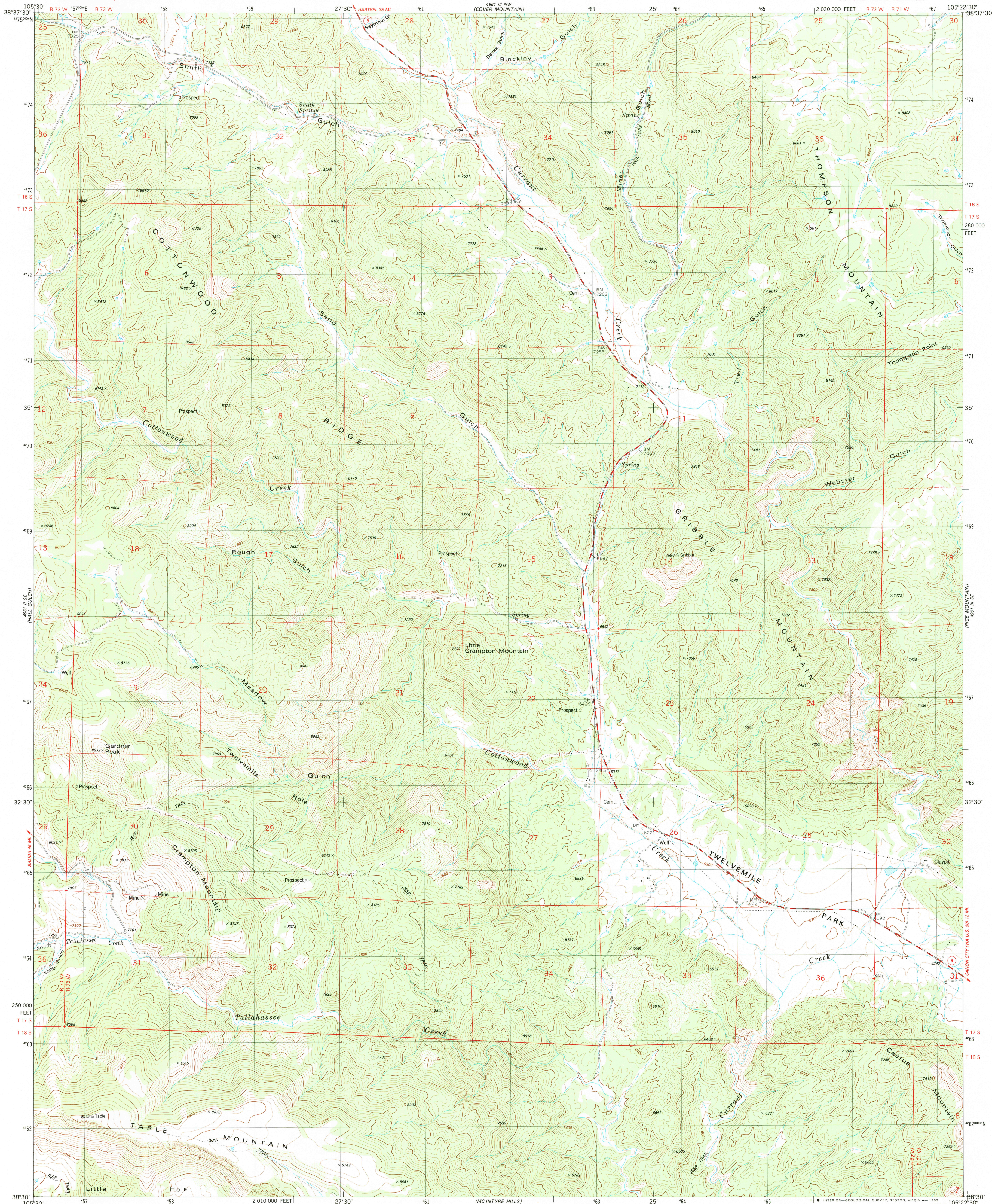


UNITED STATES
DEPARTMENT OF THE INTERIOR
GEOLOGICAL SURVEY

GRIBBLE MOUNTAIN QUADRANGLE
COLORADO-FREMONT CO.
7.5 MINUTE SERIES (TOPOGRAPHIC)
SW/4 COVER MTN. 15' QUADRANGLE



Mapped, edited, and published by the Geological Survey

Control by USGS and NOS/NOAA

Topography by photogrammetric methods from aerial photographs taken 1975. Field checked 1976. Map edited 1983

Projection and 10,000-foot grid ticks: Colorado

coordinate system, central zone (Lambert conformal conic)

1000-meter Universal Transverse Mercator grid, zone 13

1927 North American datum

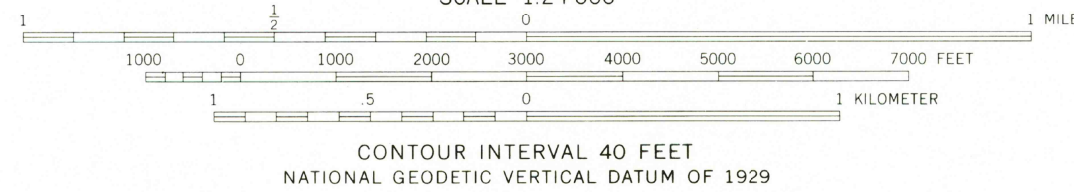
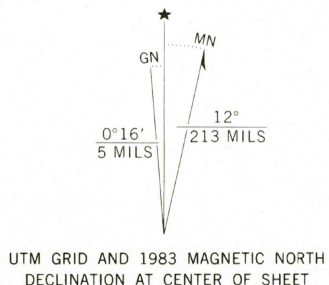
To place on the predicted North American Datum 1983

move the projection lines 4 meters north and

49 meters east as shown by dashed corner ticks

Where omitted, land lines have not been established

or are not shown because of insufficient data



ROAD CLASSIFICATION	
Primary highway, hard surface	Light-duty road, hard or improved surface
Secondary highway, hard surface	Unimproved road
Interstate Route	U.S. Route
	State Route

GRIBBLE MOUNTAIN, COLO.

SW/4 COVER MTN. 15' QUADRANGLE

N3830-W10522.5/7.5

1983

DMA 4961 III SW-SERIES V877