

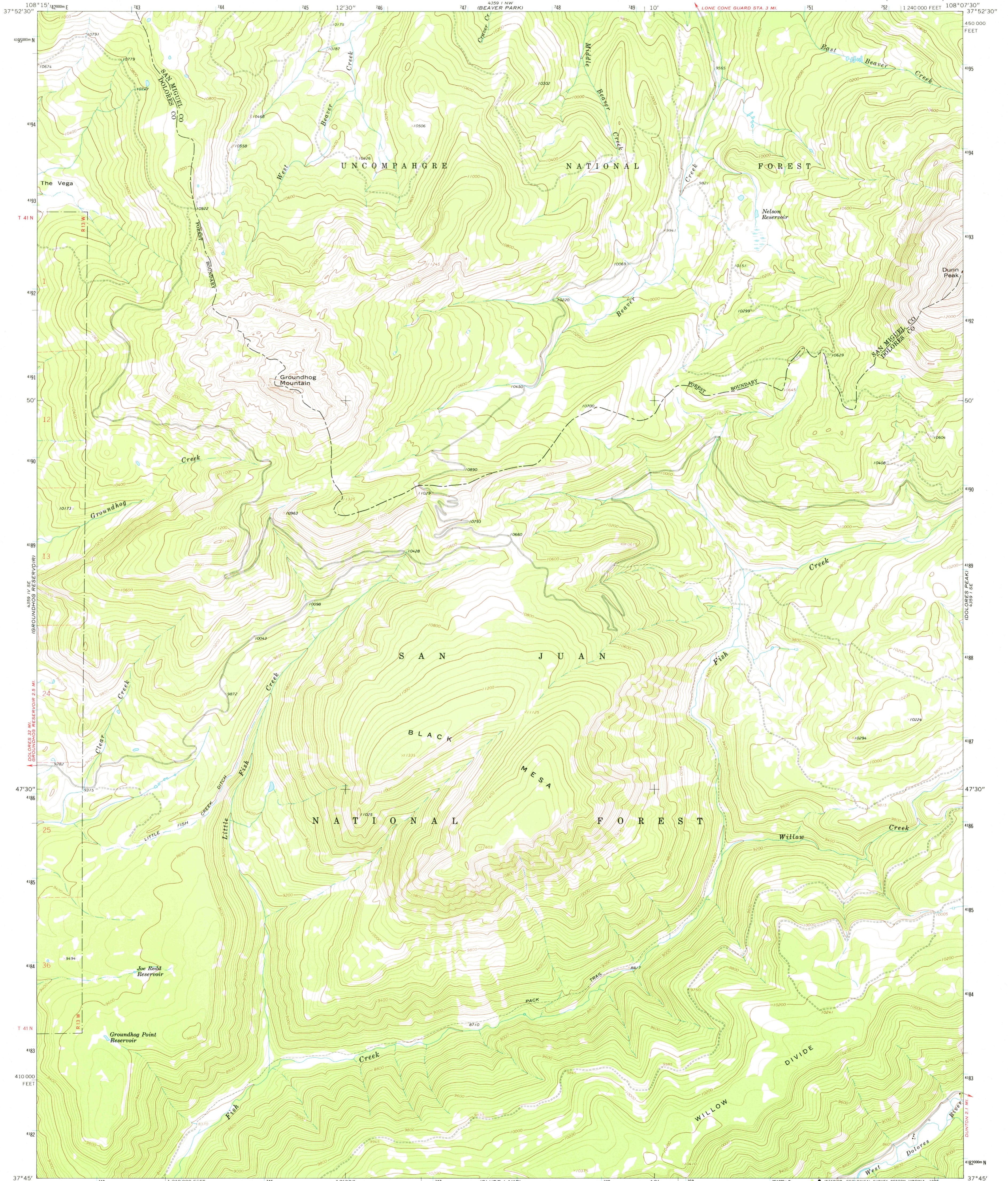
4359 I SW (LONE CONE)

UNITED STATES DEPARTMENT OF THE INTERIOR GEOLOGICAL SURVEY



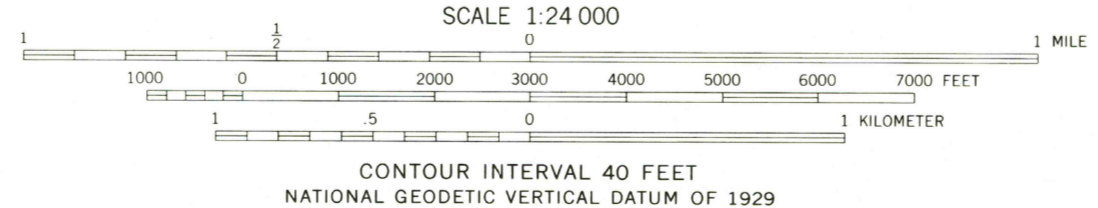
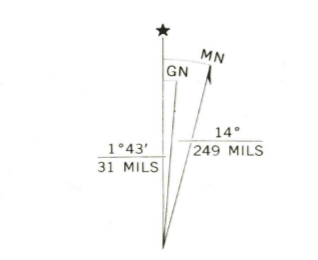
GROUNDHOG MOUNTAIN QUADRANGLE COLORADO 7.5 MINUTE SERIES (TOPOGRAPHIC)

4359 I NE (LITTLE CONE)



Mapped, edited, and published by the Geological Survey

Control by USGS and USCGS Topography by photogrammetric methods from aerial photographs taken 1963. Field checked 1964 Polyconic projection. 1927 North American datum 10,000-foot grid based on Colorado coordinate system, south zone 1000-meter Universal Transverse Mercator grid ticks, zone 12, shown in blue Certain land lines are omitted because of insufficient data There may be private inholdings within the boundaries of the National or State reservations shown on this map Map photoinspected 1975 No major culture or drainage changes observed



CONTOUR INTERVAL 40 FEET NATIONAL GEODETIC VERTICAL DATUM OF 1929

THIS MAP COMPLIES WITH NATIONAL MAP ACCURACY STANDARDS FOR SALE BY U. S. GEOLOGICAL SURVEY, DENVER, COLORADO 80225, OR RESTON, VIRGINIA 22092 A FOLDER DESCRIBING TOPOGRAPHIC MAPS AND SYMBOLS IS AVAILABLE ON REQUEST



ROAD CLASSIFICATION Light-duty Unimproved dirt

USCS Historical File Topographic Division

GROUNDHOG MOUNTAIN, COLO. N3745-W10807.5/7.5

1964 PHOTOINSPECTED 1975 DMA 4359 I SW-SERIES V877

SEP 18 1979

3800