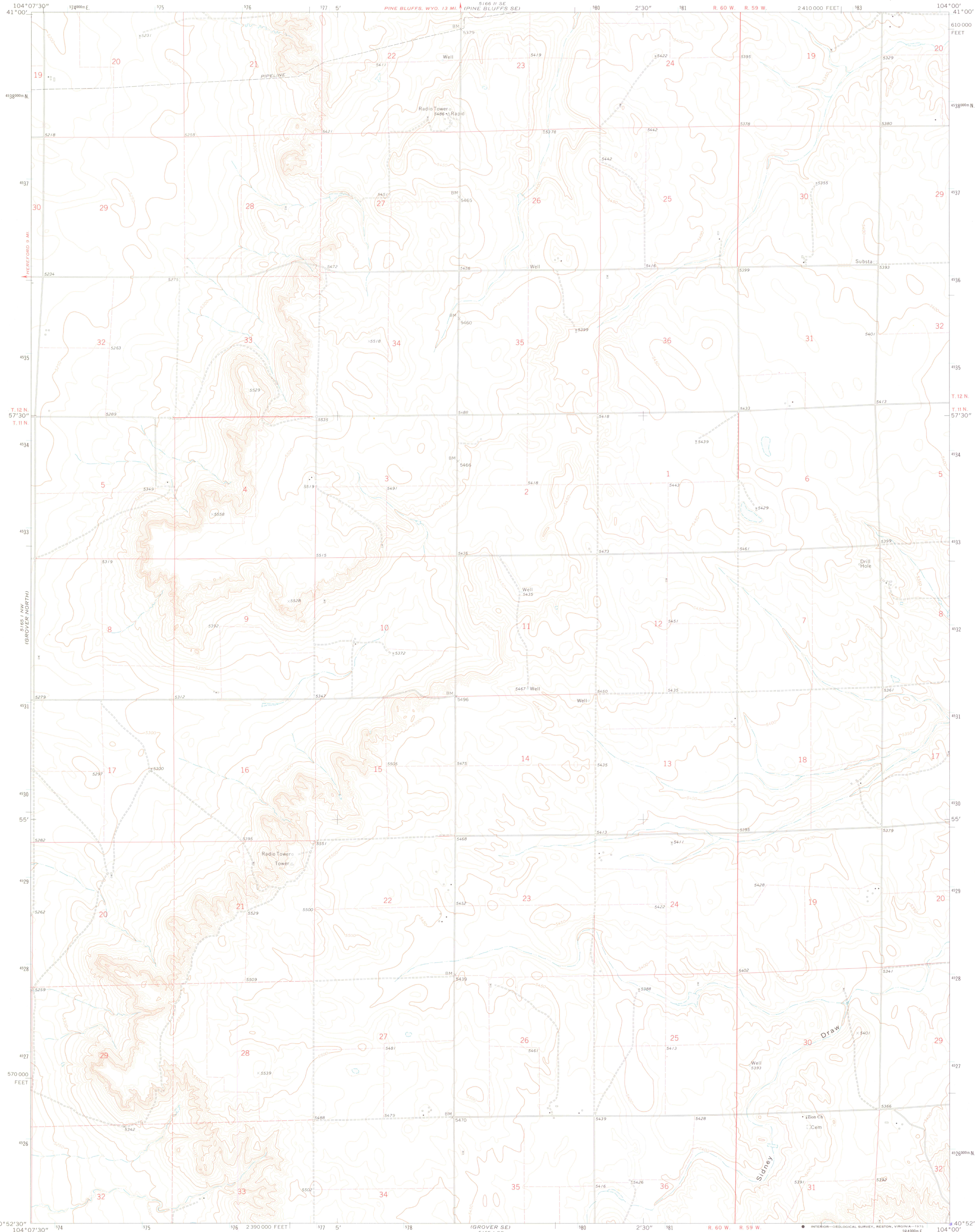
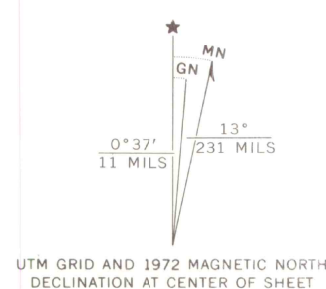


UNITED STATES
DEPARTMENT OF THE INTERIOR
GEOLOGICAL SURVEY

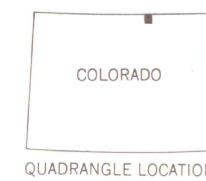
GROVER NE QUADRANGLE
COLORADO—WELD CO.
7.5 MINUTE SERIES (TOPOGRAPHIC)



Mapped, edited, and published by the Geological Survey
Control by USGS and USC&GS
Topography by photogrammetric methods from aerial
photographs taken 1971. Field checked 1972
Projection and 10,000-foot grid ticks: Colorado
coordinate system, north zone (Lambert conformal conic)
1000-meter Universal Transverse Mercator grid ticks,
zone 13, shown in blue. 1927 North American datum
Fine red dashed lines indicate selected fence lines
Land lines, in part, are based on cultural development
and are not reflected in the original land survey
Certain land lines are omitted because of insufficient data



SCALE 1:24,000
1000 0 1000 2000 3000 4000 5000 6000 7000 FEET
1 KILOMETER
CONTOUR INTERVAL 10 FEET
NATIONAL GEODETIC VERTICAL DATUM OF 1929



ROAD CLASSIFICATION
Primary highway, hard surface
Secondary highway, hard surface
Unimproved road
Light-duty road, hard or improved surface
U.S. Route
Interstate Route

GROVER NE, COLO.
N4052.5—W10400/7.5
1972

AMS 5165 1 NE—SERIES V877

NOV 25 2003
NATIONAL LIBRARY OF MEDICINE
COLLEGE LIBRARY
U. S. DEPOSITORY

6
4310
s24
BRURY COLLEGE
LIBRARY
Springfield, Missouri 65802
MAY 26 1975
U. S. DEPOSITORY
63700

MAP ROOM