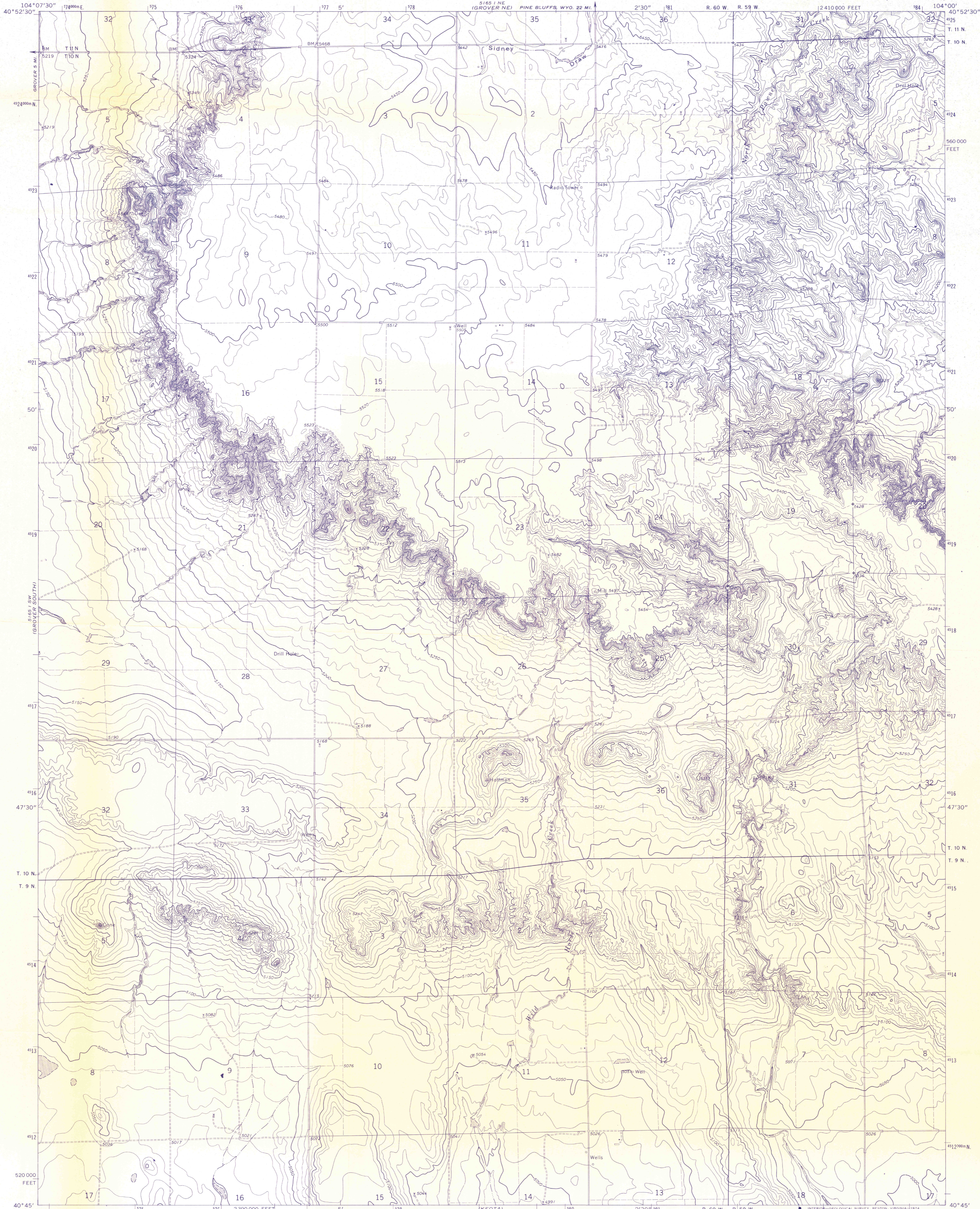


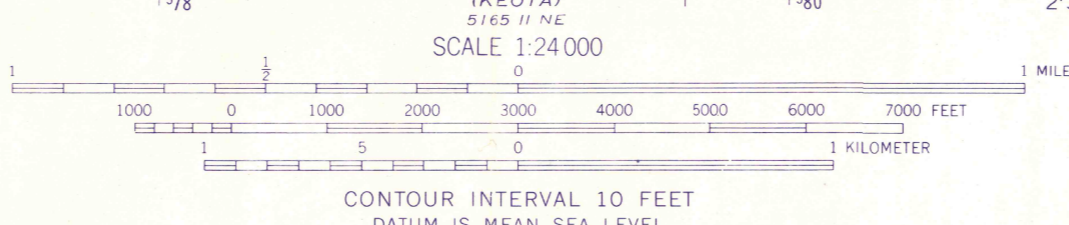
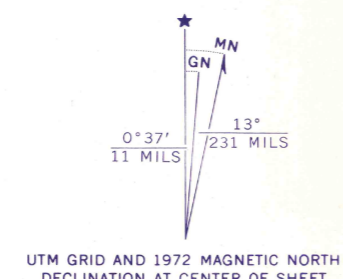
UNITED STATES
DEPARTMENT OF THE INTERIOR
GEOLOGICAL SURVEY

GROVER SE QUADRANGLE
COLORADO—WELD CO.
7.5 MINUTE SERIES (TOPOGRAPHIC)

ADVANCE PROOF
SUBJECT TO CORRECTION
F



Mapped, edited, and published by the Geological Survey
Control by USGS, USC&GS, and U. S. Forest Service
Topography by photogrammetric methods from aerial
photographs taken 1971. Field checked 1972
Projection and 10,000-foot grid ticks: Colorado
coordinate system, north zone (Lambert conformal conic)
1000-meter Universal Transverse Mercator grid ticks,
zone 13, shown in blue. 1927 North American datum
Fine red dashed lines indicate selected fence lines
Land lines, in part, are based on cultural development
and are not reflected in the original land survey
Certain land lines are omitted because of insufficient data



ROAD CLASSIFICATION

Primary highway, hard surface	Light-duty road, hard or improved surface
Secondary highway, hard surface	Unimproved road
Interstate Route	U. S. Route
	State Route



THIS MAP COMPLIES WITH NATIONAL MAP ACCURACY STANDARDS
FOR SALE BY U.S. GEOLOGICAL SURVEY, DENVER, COLORADO 80225, OR RESTON, VIRGINIA 22092
A FOLDER DESCRIBING TOPOGRAPHIC MAPS AND SYMBOLS IS AVAILABLE ON REQUEST

GROVER SE, COLO.
N4045—W10400/7.5
1972
AMS 5165 1 SE—SERIES V877

NOTE

This map was prepared as part of the U.S. Geological Survey's program for completing the topographic mapping of the United States. We wish to have the maps available for general distribution with the minimum of error. These proofs are sent for your review and comment. Please sign and return your marked copy within 10 days to address shown. If no comments, both copies may be retained for your use. Additional prints of this map are available at 75¢ each from the address shown.

CHIEF,
ROCKY MOUNTAIN MAPPING CENTER
U.S. GEOLOGICAL SURVEY
BLDG. 25, FEDERAL CENTER
DENVER, COLORADO 80225
SIGNATURE _____
TITLE _____
ADDRESS _____

Checked by: [Signature]
Grover Project 112-98
JG E-10 G1
(O)