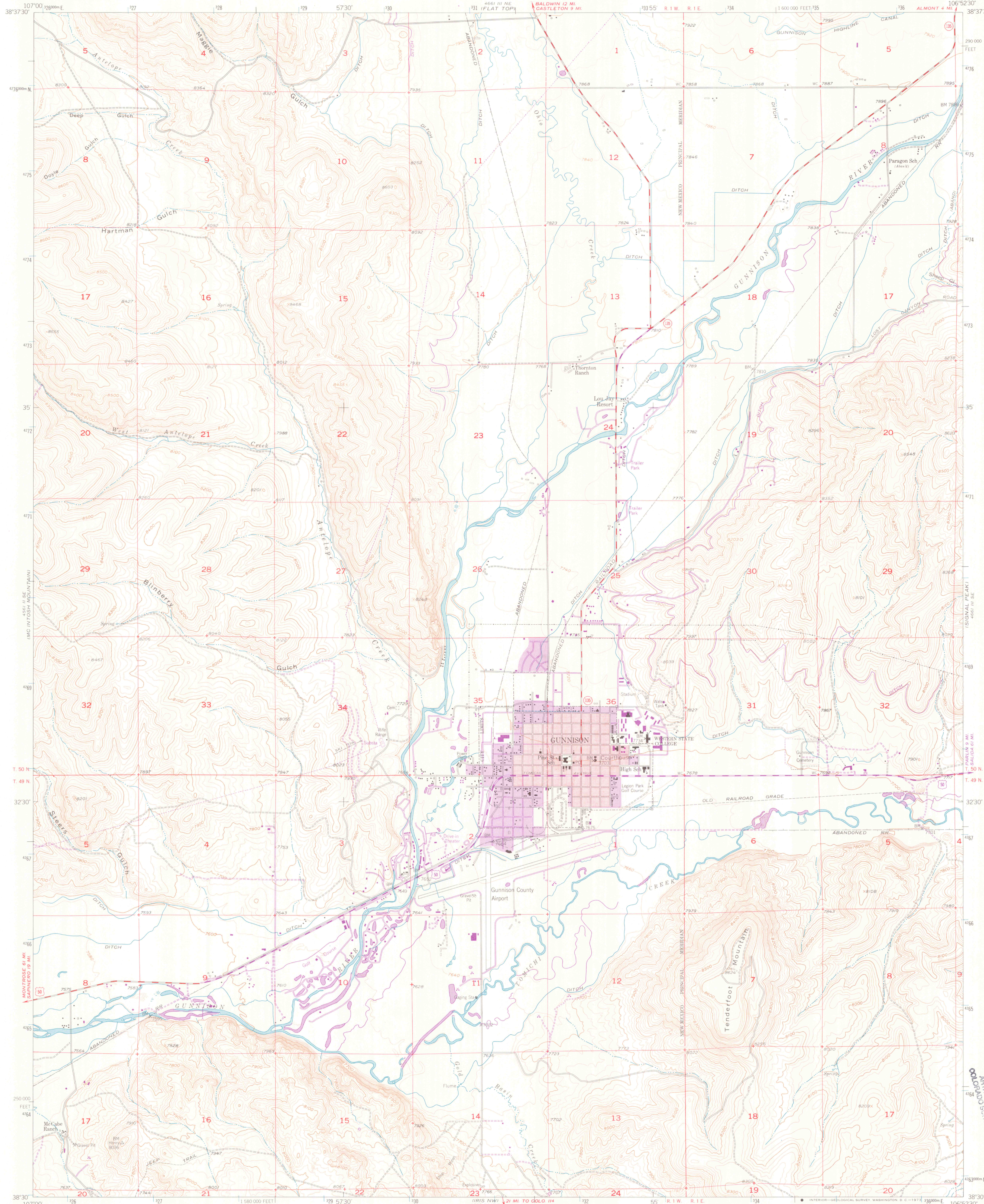
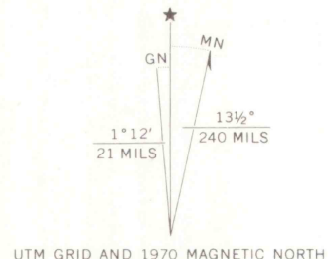


UNITED STATES  
DEPARTMENT OF THE INTERIOR  
GEOLOGICAL SURVEY

GUNNISON QUADRANGLE  
COLORADO-GUNNISON CO.  
7.5 MINUTE SERIES (TOPOGRAPHIC)



Mapped, edited, and published by the Geological Survey  
Control by USGS and USC&GS  
Topography by photogrammetric methods from aerial photographs  
taken 1950. Field check 1954  
Polyconic projection. 1927 North American datum  
10,000-foot grid based on Colorado coordinate system, central zone  
1000-meter Universal Transverse Mercator grid ticks,  
zone 13, shown in blue  
Red tint indicates areas in which only landmark buildings are shown  
Dashed land lines indicate approximate locations  
Revisions shown in purple compiled from aerial photographs  
taken 1970. This information not checked  
Purple tint indicates extension of urban areas



SCALE 1:24,000  
1000 0 1000 2000 3000 4000 5000 6000 7000 FEET  
0 5 10 KILOMETER  
CONTOUR INTERVAL 20 FEET  
DATUM IS MEAN SEA LEVEL  
THIS MAP COMPLIES WITH NATIONAL MAP ACCURACY STANDARDS  
FOR SALE BY U.S. GEOLOGICAL SURVEY, DENVER, COLORADO 80225, OR WASHINGTON, D.C. 20242  
A FOLDER DESCRIBING TOPOGRAPHIC MAPS AND SYMBOLS IS AVAILABLE ON REQUEST

ROAD CLASSIFICATION  
Heavy-duty ——— Light-duty ———  
Medium-duty ——— Unimproved dirt ———  
U.S. Route ——— State Route ———  
COLORADO  
QUADRANGLE LOCATION  
GUNNISON, COLO.  
N3830—W10652.5/7.5  
1954  
PHOTOREVISED 1970  
AMS 4661 III SW—SERIES V877

JUN 1995  
U.S. GEOLOGICAL SURVEY  
ATLANTIC REGION  
COLORADO SCHOOL OF MINES  
OFFICE COPY  
3701  
C222  
824  
US