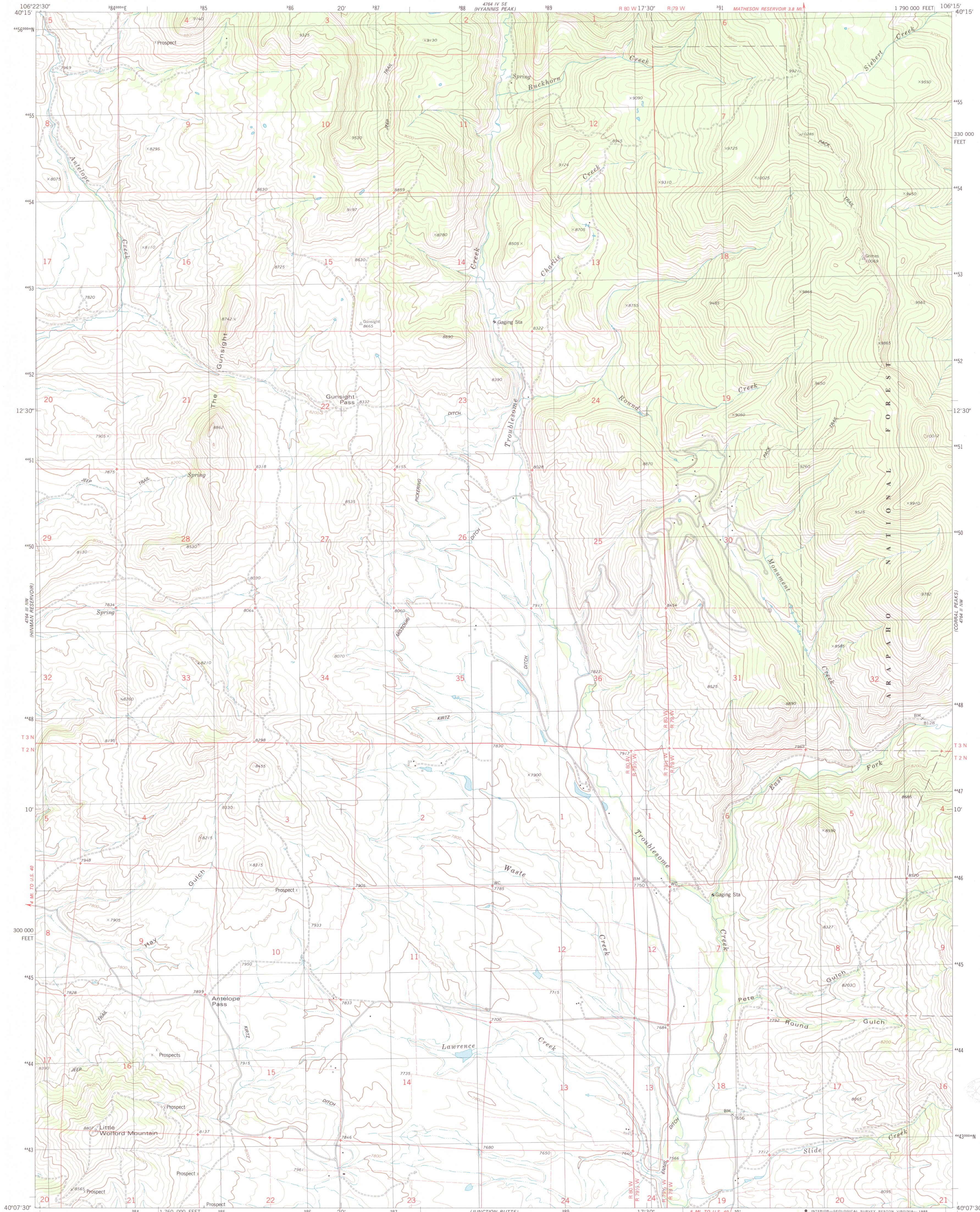


UNITED STATES  
DEPARTMENT OF THE INTERIOR  
GEOLOGICAL SURVEY

GUNSIGHT PASS QUADRANGLE  
COLORADO—GRAND CO.  
7.5 MINUTE SERIES (TOPOGRAPHIC)

NE/4 KREMMLING 15' QUADRANGLE

1 790 000 FEET



Mapped, edited, and published by the Geological Survey

Control by USGS and NOS/NOAA

Topography by photogrammetric methods from aerial photographs taken 1975. Field checked 1976. Map edited 1980

Projection and 10,000-foot grid ticks: Colorado coordinate system, north zone (Lambert conformal conic)

1000-meter Universal Transverse Mercator grid, zone 13

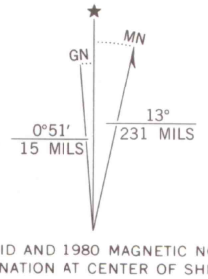
1927 North American Datum

To place on the predicted North American Datum 1983 move the projection lines 6 meters north and 51 meters east as shown by dashed corner ticks

Fine red dashed lines indicate selected fence lines

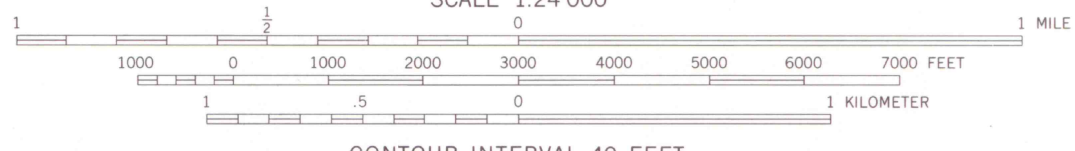
Certain land lines are omitted because of insufficient data

There may be private inholdings within the boundaries of the National or State reservations shown on this map



UTM GRID AND 1980 MAGNETIC NORTH DECLINATION AT CENTER OF SHEET

SCALE 1:24 000



CONTOUR INTERVAL 40 FEET  
NATIONAL GEODETIC VERTICAL DATUM OF 1929



QUADRANGLE LOCATION

ROAD CLASSIFICATION

- Primary highway, hard surface
- Secondary highway, hard surface
- Interstate Route
- U.S. Route
- State Route
- Light-duty road, hard or improved surface
- Unimproved road

GUNSIGHT PASS, COLO.

NE/4 KREMMLING 15' QUADRANGLE  
40106-B3-TF-024

1980

DMA 4764 III NE—SERIES V877

G 3700  
524  
.G4  
MAP ROOM