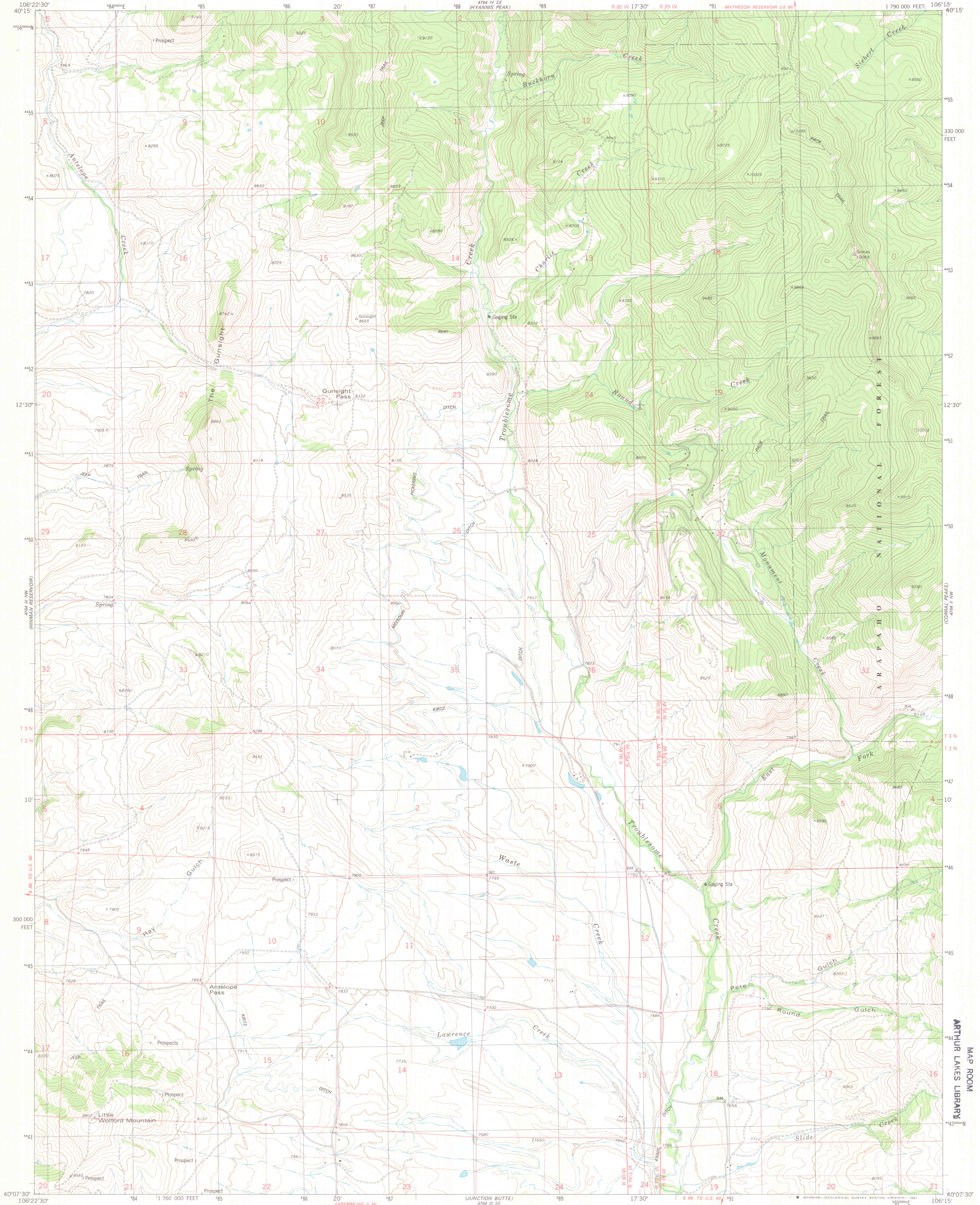


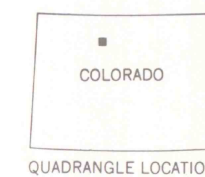
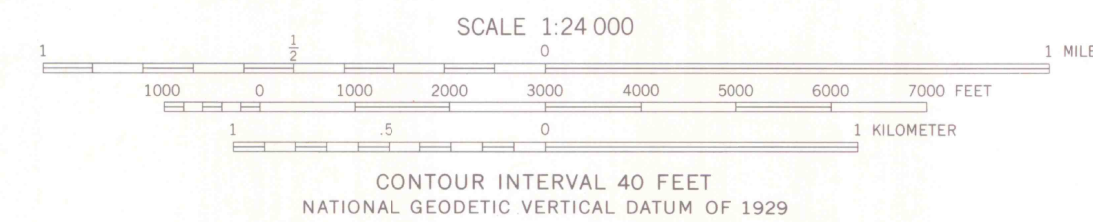
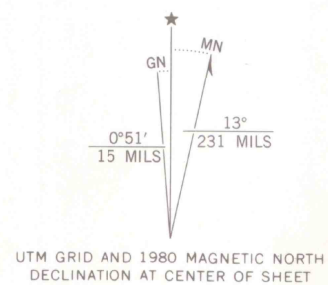
UNITED STATES
DEPARTMENT OF THE INTERIOR
GEOLOGICAL SURVEY

GUNSIGHT PASS QUADRANGLE
COLORADO—GRAND CO.
7.5 MINUTE SERIES (TOPOGRAPHIC)
NE 1/4 KREMMLING 15' QUADRANGLE



Mapped, edited, and published by the Geological Survey

Control by USGS and NOS/NOAA
Topography by photogrammetric methods from aerial photographs taken 1975. Field checked 1976. Map edited 1980
Projection and 10,000-foot grid ticks: Colorado coordinate system, north zone (Lambert conformal conic)
1000-meter Universal Transverse Mercator grid, zone 13
1927 North American datum
To place on the predicted North American Datum 1983 move the projection lines 6 meters north and 51 meters east as shown by dashed corner ticks
Fine red dashed lines indicate selected fence lines
Certain land lines are omitted because of insufficient data
There may be private inholdings within the boundaries of the National or State reservations shown on this map



ROAD CLASSIFICATION
Primary highway, hard surface
Secondary highway, hard surface
Unimproved road
Interstate Route
U.S. Route
State Route
Light-duty road, hard or improved surface
Unimproved road

GUNSIGHT PASS, COLO.
NE 1/4 KREMMLING 15' QUADRANGLE
N4007.5-W10615.7.5

1980
DMA 4764 III NE—SERIES V877

ARTHUR LAKES LIBRARY

JUL 14 1981
MAP ROOM



OFFICE COPY

LIBRARY USE ONLY