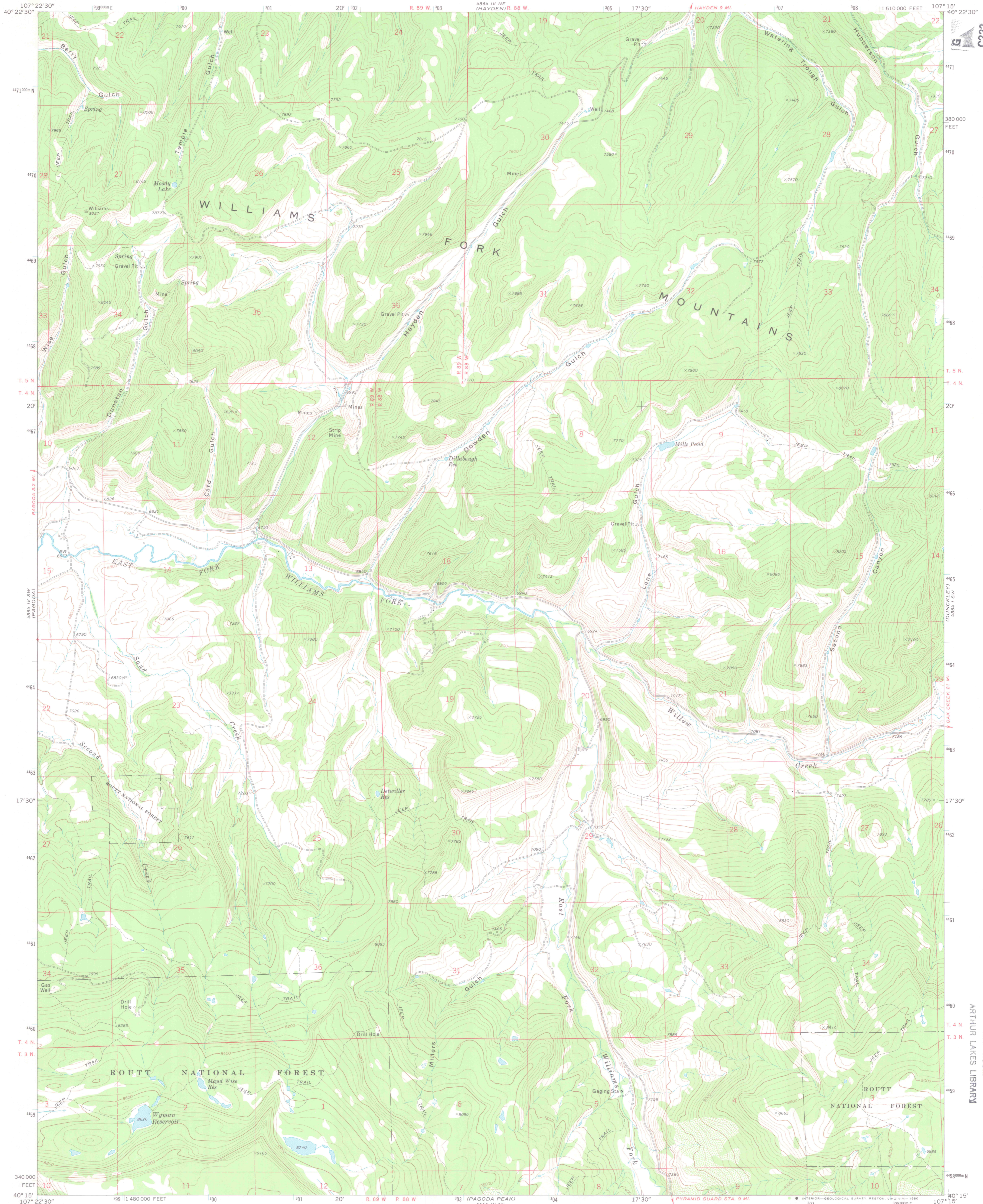


4564 IV NE (HAYDEN)
4564 I SW (MOUNT HARRIS)
C222
S24
U5



Mapped, edited, and published by the Geological Survey
Control by USGS and USC&GS
Topography by photogrammetric methods from aerial photographs taken 1970. Field checked 1971
Projection and 10,000-foot grid ticks: Colorado coordinate system, north zone (Lambert conformal conic) 1000-meter Universal Transverse Mercator grid ticks, zone 13, shown in blue. 1927 North American datum
To place on the predicted North American Datum 1983 move the projection lines 6 meters north and 53 meters east as shown by the dashed corner ticks
There may be private inholdings within the boundaries of the National or State reservations shown on this map
Fine red dashed lines indicate selected fence lines

Map photoinspected 1973
No major culture or drainage changes observed

THIS MAP COMPLIES WITH NATIONAL MAP ACCURACY STANDARDS
FOR SALE BY U. S. GEOLOGICAL SURVEY, DENVER, COLORADO 80225, OR RESTON, VIRGINIA 22092
A FOLDER DESCRIBING TOPOGRAPHIC MAPS AND SYMBOLS IS AVAILABLE ON REQUEST

ROAD CLASSIFICATION
Primary highway, hard surface
Secondary highway, hard surface
Light-duty road, hard or improved surface
Unimproved road
Interstate Route
U. S. Route
State Route

188001500972

SEP 28 1981
MAP ROOM
ARTHUR LAKES LIBRARY
G 3701
C222
24
15
G
C222
S24
U5
LIBRARY USE ONLY