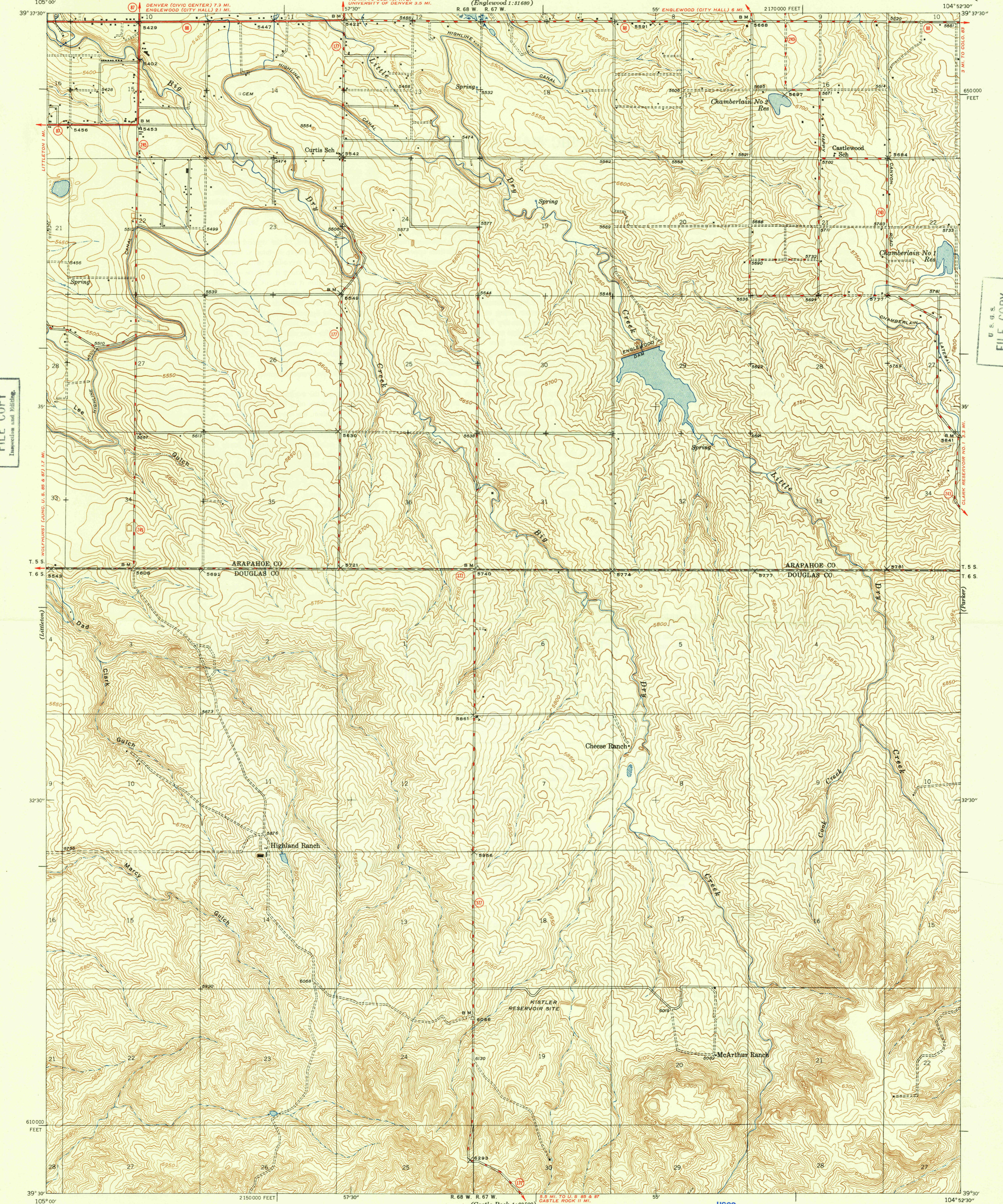


U. S. G. S.  
**FILE COPY**  
Inspection and Editing.

UNITED STATES  
DEPARTMENT OF THE INTERIOR  
GEOLOGICAL SURVEY

STATE OF COLORADO  
STATE HIGHWAY DEPARTMENT CITY AND COUNTY OF DENVER  
DENVER BOARD OF WATER COMMISSIONERS

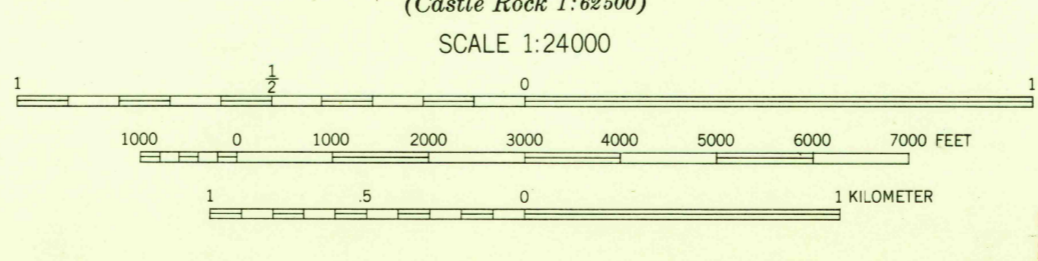
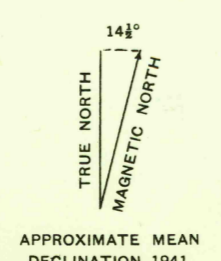
COLORADO  
**HIGHLAND RANCH QUADRANGLE**  
7 1/2-MINUTE SERIES



U. S. G. S.  
**FILE COPY**  
Inspection and Editing.

U. S. G. S.  
**FILE COPY**  
Inspection and Editing.

Map by the Geological Survey  
and from Denver City special survey  
1939  
Works Progress Administration Nos. 2552-3031-3687  
Colorado State Highway Department, City and County  
of Denver, Denver Board of Water Commissioners, Sponsors  
Fred Graff, Jr., Geological Survey, Supervisor



Contour interval 10 feet  
Datum is mean sea level

USGS  
Historical File  
Topographic Division

**ROAD CLASSIFICATION**  
Heavy-duty ———— 4 LANE ROAD Improved dirt  
Medium-duty ———— 2 LANE ROAD Unimproved dirt  
Loose-surface, graded, or narrow hard-surface - - - -  
U. S. Route      State Route

Polyconic projection. 1927 North American datum  
10000 foot grid based on Colorado (Central)  
rectangular coordinate system

**HIGHLAND RANCH, COLO.**  
Edition of 1949  
N3930-W10452.5/7.5

U. S. G. S.  
**FILE COPY**  
Inspection and Editing.

FEB 17 1949