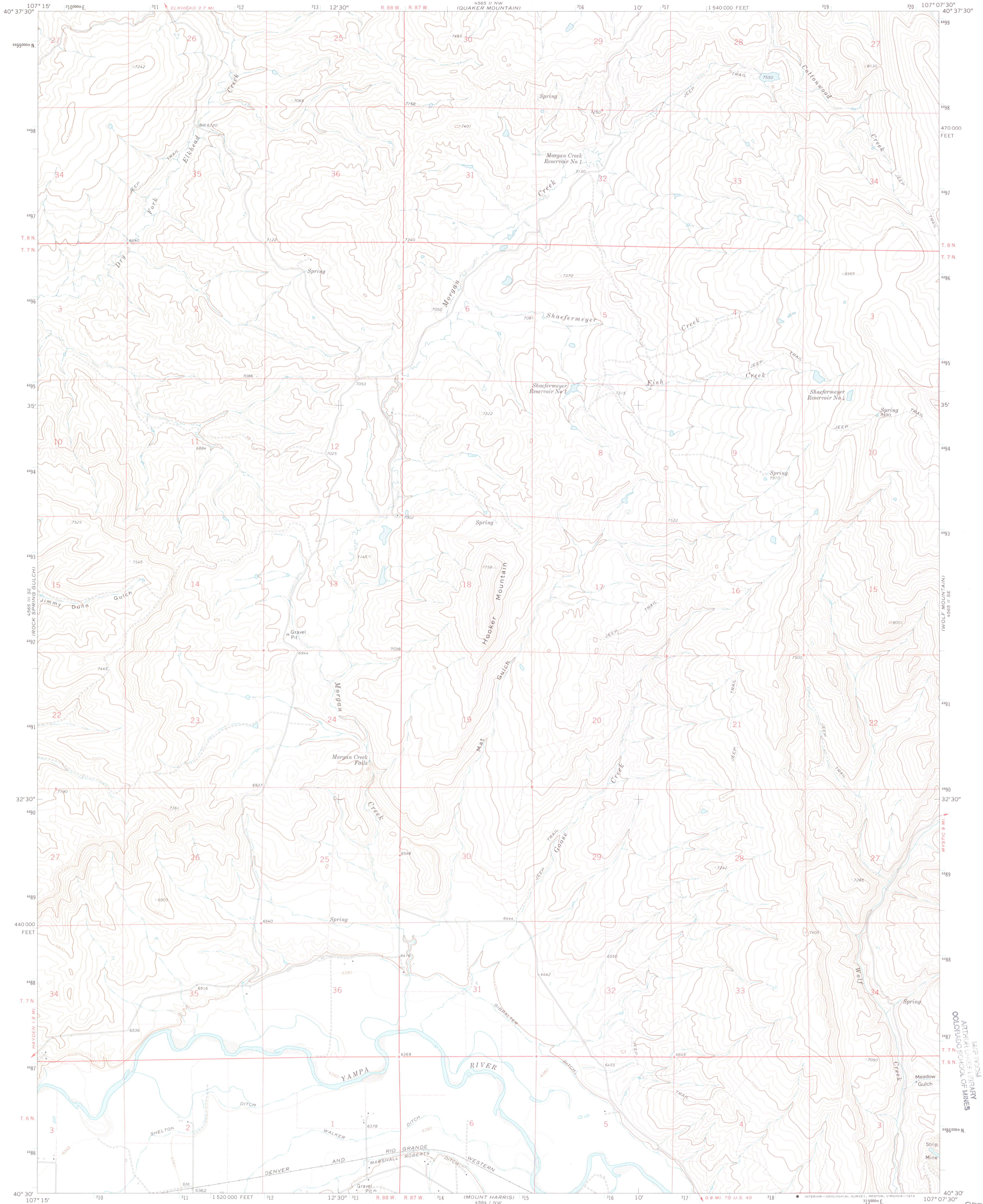
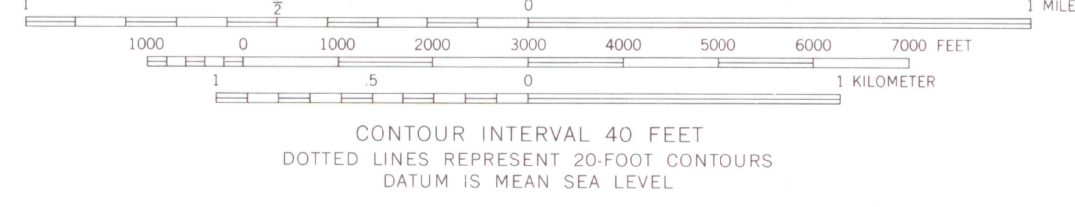
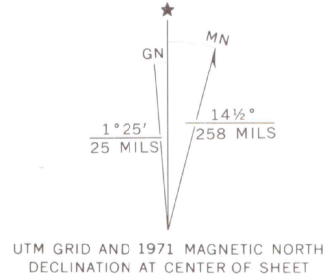


UNITED STATES
DEPARTMENT OF THE INTERIOR
GEOLOGICAL SURVEY

HOOKER MOUNTAIN QUADRANGLE
COLORADO—ROUTT CO.
7.5 MINUTE SERIES (TOPOGRAPHIC)
SW/4 PILOT KNOB 15' QUADRANGLE



Map produced, and published by the Geological Survey
Control by USGS and USC&GS
Topography by photogrammetric methods from aerial
photographs taken 1970. Field checked 1971
Projection and 10,000-foot grid ticks: Colorado
coordinate system, north zone (Lambert conformal conic)
1000-meter Universal Transverse Mercator grid ticks,
zone 13, shown in blue. 1927 North American datum
Fine red dashed lines indicate selected fence lines



ROAD CLASSIFICATION
 Primary highway, Light-duty road, hard or improved surface
 Secondary highway, Unimproved road
 Interstate Route U. S. Route State Route

HOOKER MOUNTAIN, COLO.
 SW/4 PILOT KNOB 15' QUADRANGLE
 N4030—W10707.5/7.5

THIS MAP COMPLIES WITH NATIONAL MAP ACCURACY STANDARDS
 FOR SALE BY U. S. GEOLOGICAL SURVEY, DENVER, COLORADO 80225 OR RESTON, VIRGINIA 22092
 A FOLDER DESCRIBING TOPOGRAPHIC MAPS AND SYMBOLS IS AVAILABLE ON REQUEST

1971
 AMS 4565 II SW—SERIES V877



JUN 1995
 MAP ROOM
 NATIONAL LIBRARY
 COLORADO SCHOOL OF MINES
 OFFICE COPY
 G 3701
 C222
 USE ONLY
 US