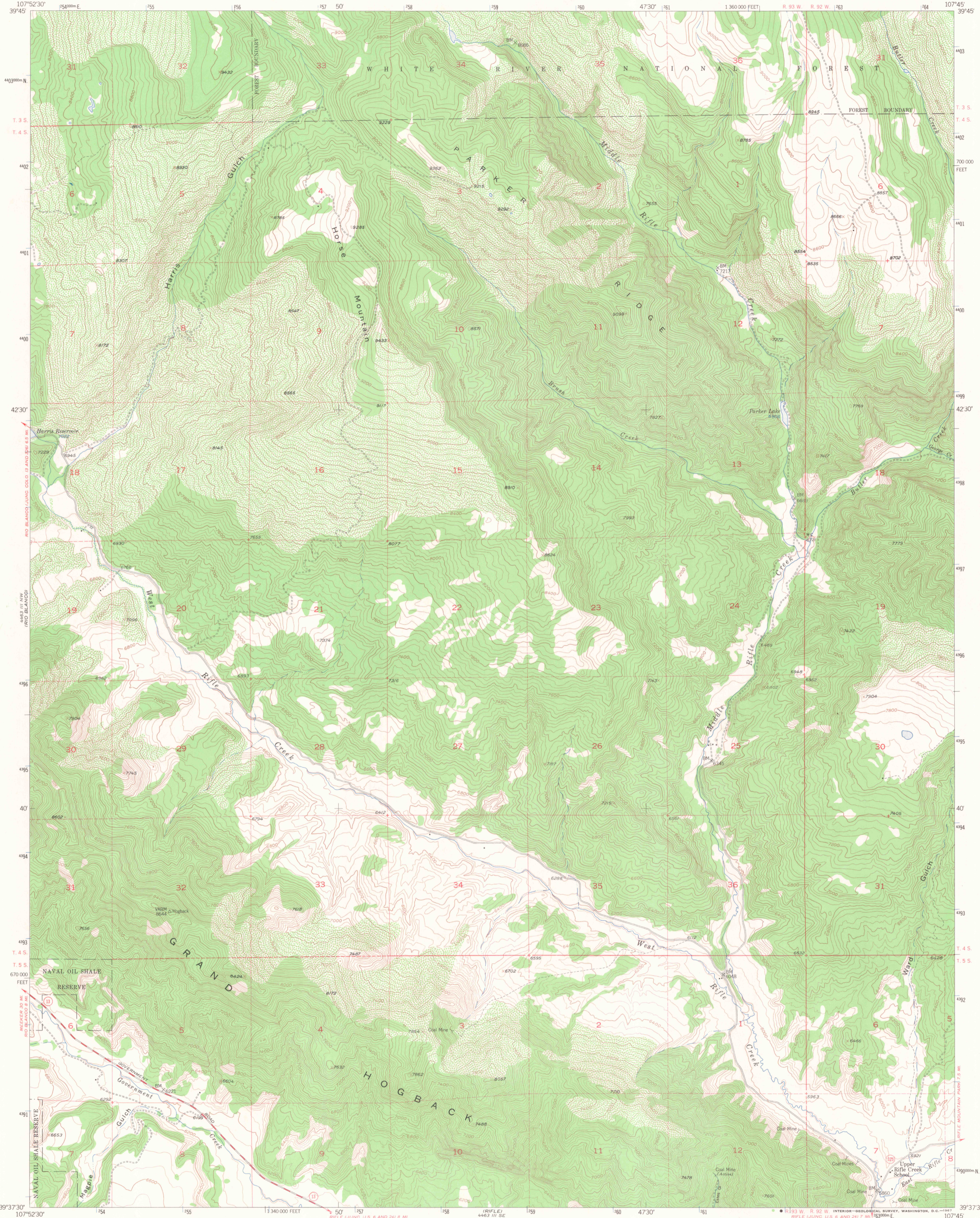
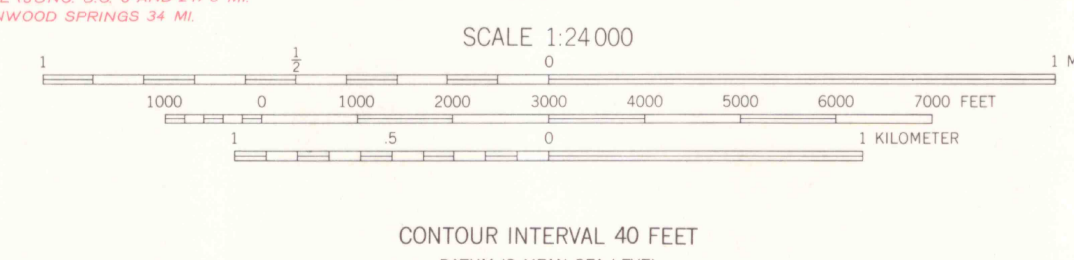
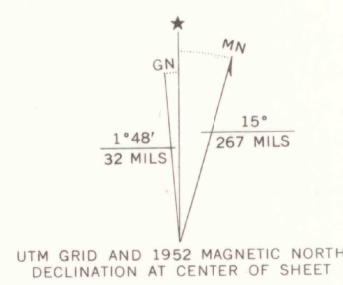


C222
S24
U5
Horse Mountain
1852
C.2



Maped, edited, and published by the Geological Survey
Control by USGS and USC&GS
Topography from aerial photographs by multiplex methods
Aerial photographs taken 1948. Field check 1952
Polyconic projection. 1927 North American datum
10,000-foot grid based on Colorado coordinate system,
central zone
Dashed land lines indicate approximate locations
All mines are inactive unless otherwise indicated
1000-meter Universal Transverse Mercator grid ticks,
zone 13, shown in blue



ROAD CLASSIFICATION

Heavy-duty	4 LANE 6 LANE	Light-duty
Medium-duty	4 LANE 6 LANE	Unimproved dirt

U.S. Route (square symbol)
State Route (circle symbol)



THIS MAP COMPLIES WITH NATIONAL MAP ACCURACY STANDARDS
FOR SALE BY U.S. GEOLOGICAL SURVEY, DENVER, COLORADO 80225, OR WASHINGTON, D.C. 20242
A FOLDER DESCRIBING TOPOGRAPHIC MAPS AND SYMBOLS IS AVAILABLE ON REQUEST



HORSE MOUNTAIN, COLO.
N3937.5-W10745/7.5
1952
AMS 4463 III NE-SERIES V877

SEP 3 1979
MAP ROOM
ARTHUR LAKES LIBRARY

OFFICE COPY
LIBRARY USE ONLY
G 3700
S24
G4
MAP ROOM