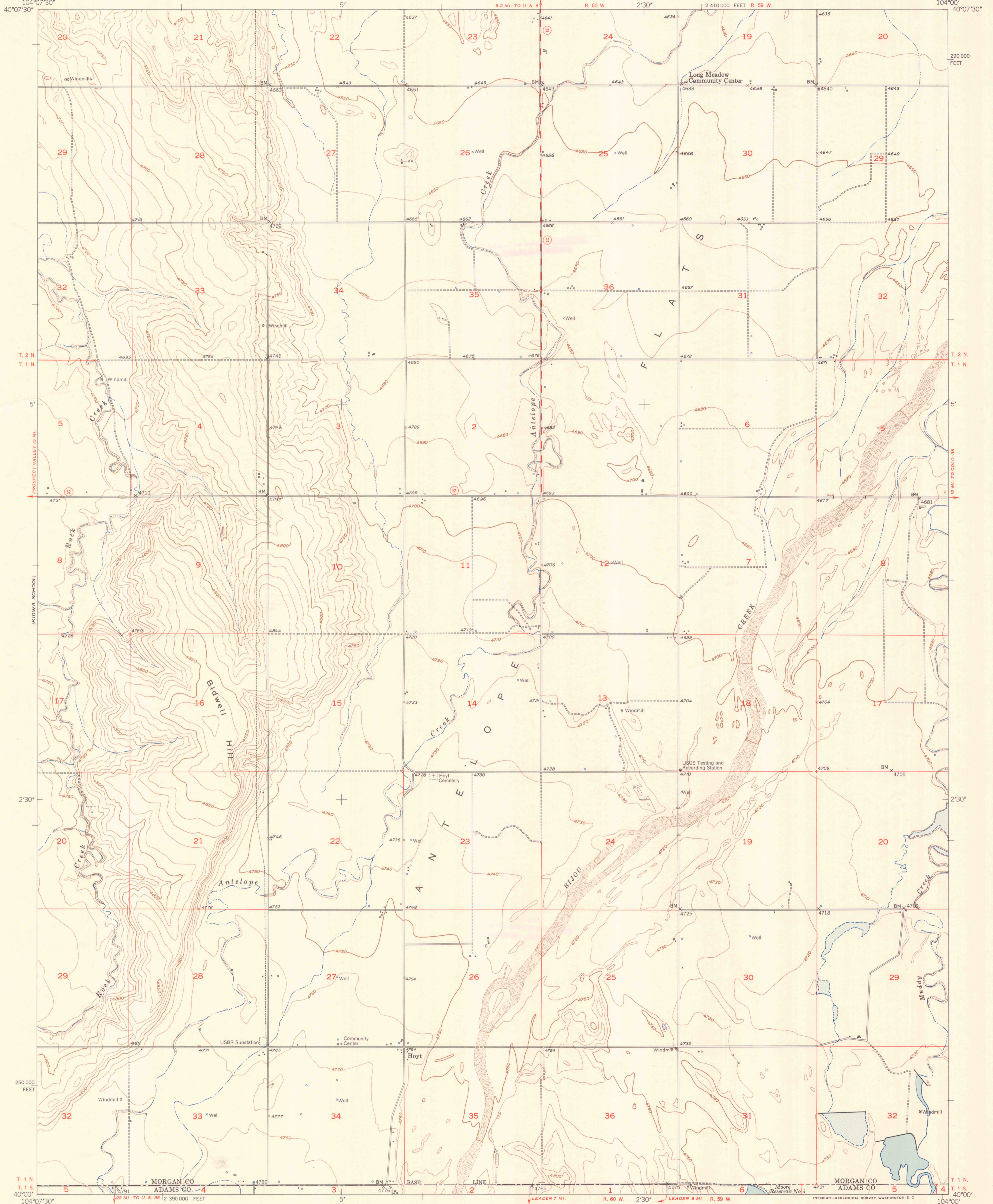
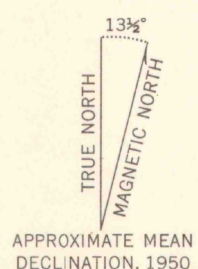


104°07'30"
40°07'30"

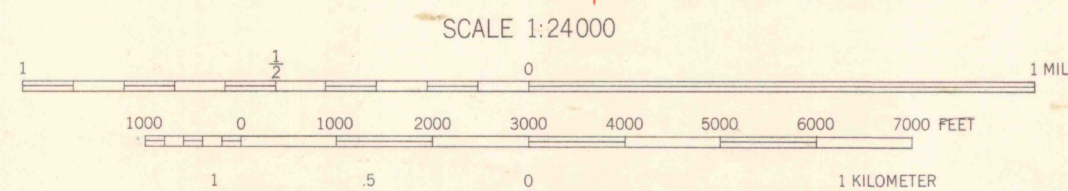
104°00'
40°07'30"



Mapped, edited, and published by the Geological Survey as part of the Department of the Interior program for the development of the Missouri River Basin. Control by USGS and USC&GS. Culture and drainage in part compiled from aerial photographs taken 1948-1949. Topography by plane-table surveys 1950. Polyconic projection. 1927 North American datum. 10,000-foot grid based on Colorado coordinate system, north zone.



APPROXIMATE MEAN DECLINATION, 1950



SCALE 1:24000
CONTOUR INTERNAL 10 FEET
DATUM IS MEAN SEA LEVEL

ROAD CLASSIFICATION

Heavy-duty	4 LANE 16 LANE	Light-duty
Medium-duty	4 LANE 16 LANE	Unimproved dirt
U. S. Route		State Route

LIBRARY
COLORADO SCHOOL OF MINES
GOLDEN, COLORADO

LIBRARY
COLORADO SCHOOL OF MINES
GOLDEN, COLORADO

HOYT, COLO.
N4000-W10400/7.5
EDITION OF 1951

THIS MAP COMPLIES WITH NATIONAL MAP ACCURACY STANDARDS
FOR SALE BY U. S. GEOLOGICAL SURVEY, FEDERAL CENTER, DENVER, COLORADO OR WASHINGTON 25, D. C.
A FOLDER DESCRIBING TOPOGRAPHIC MAPS AND SYMBOLS IS AVAILABLE ON REQUEST

LIBRARY USE ONLY

T19.12:5 Hoyt 951

OFFICE COPY