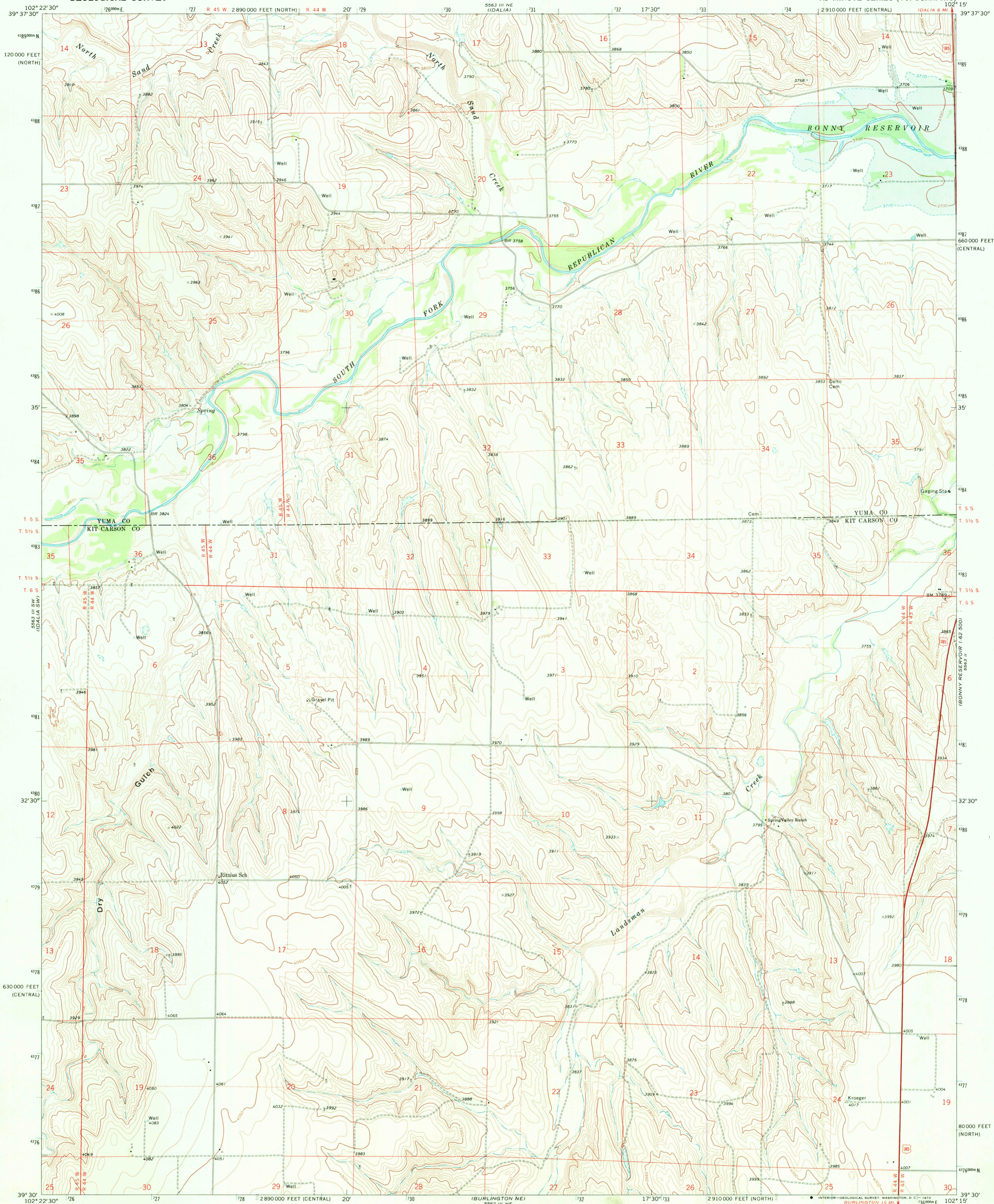
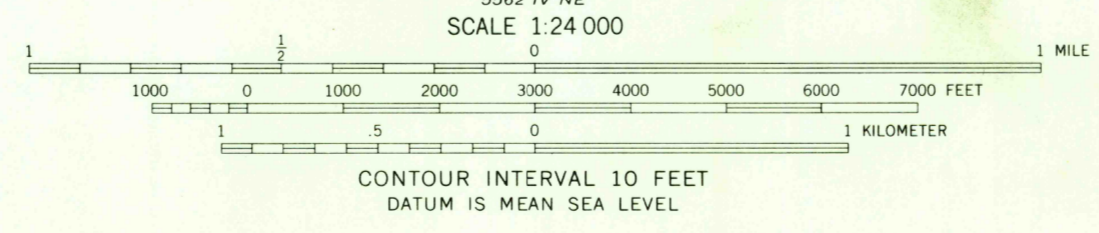
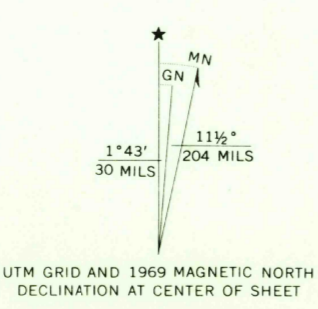


UNITED STATES  
DEPARTMENT OF THE INTERIOR  
GEOLOGICAL SURVEY

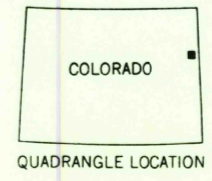
IDALIA SE QUADRANGLE  
COLORADO  
7.5 MINUTE SERIES (TOPOGRAPHIC)



Mapped, edited, and published by the Geological Survey  
Control by USGS and USC&GS  
Topography by photogrammetric methods from aerial photographs taken 1968. Field checked 1969  
Polyconic projection. 1927 North American datum  
10,000-foot grids based on Colorado coordinate system, central and north zones  
1000-meter Universal Transverse Mercator grid ticks, zone 13, shown in blue  
Fine red dashed lines indicate selected fence lines  
Areas covered by dashed light-blue pattern are subject to controlled inundation



CONTOUR INTERVAL 10 FEET  
DATUM IS MEAN SEA LEVEL



ROAD CLASSIFICATION  
Primary highway, all weather, Light-duty road, all weather, hard surface  
Unimproved road, fair or dry weather  
U. S. Route

THIS MAP COMPLIES WITH NATIONAL MAP ACCURACY STANDARDS  
FOR SALE BY U. S. GEOLOGICAL SURVEY, DENVER, COLORADO 80225, OR WASHINGTON, D. C. 20242  
A FOLDER DESCRIBING TOPOGRAPHIC MAPS AND SYMBOLS IS AVAILABLE ON REQUEST

IDALIA SE, COLO.  
N3930-W10215/7.5

JUN 0 1 1972

3190

1969  
AMS 5563 III SE-SERIES V87

USGS  
HISTORICAL FILE  
TOPOGRAPHIC DIVISION