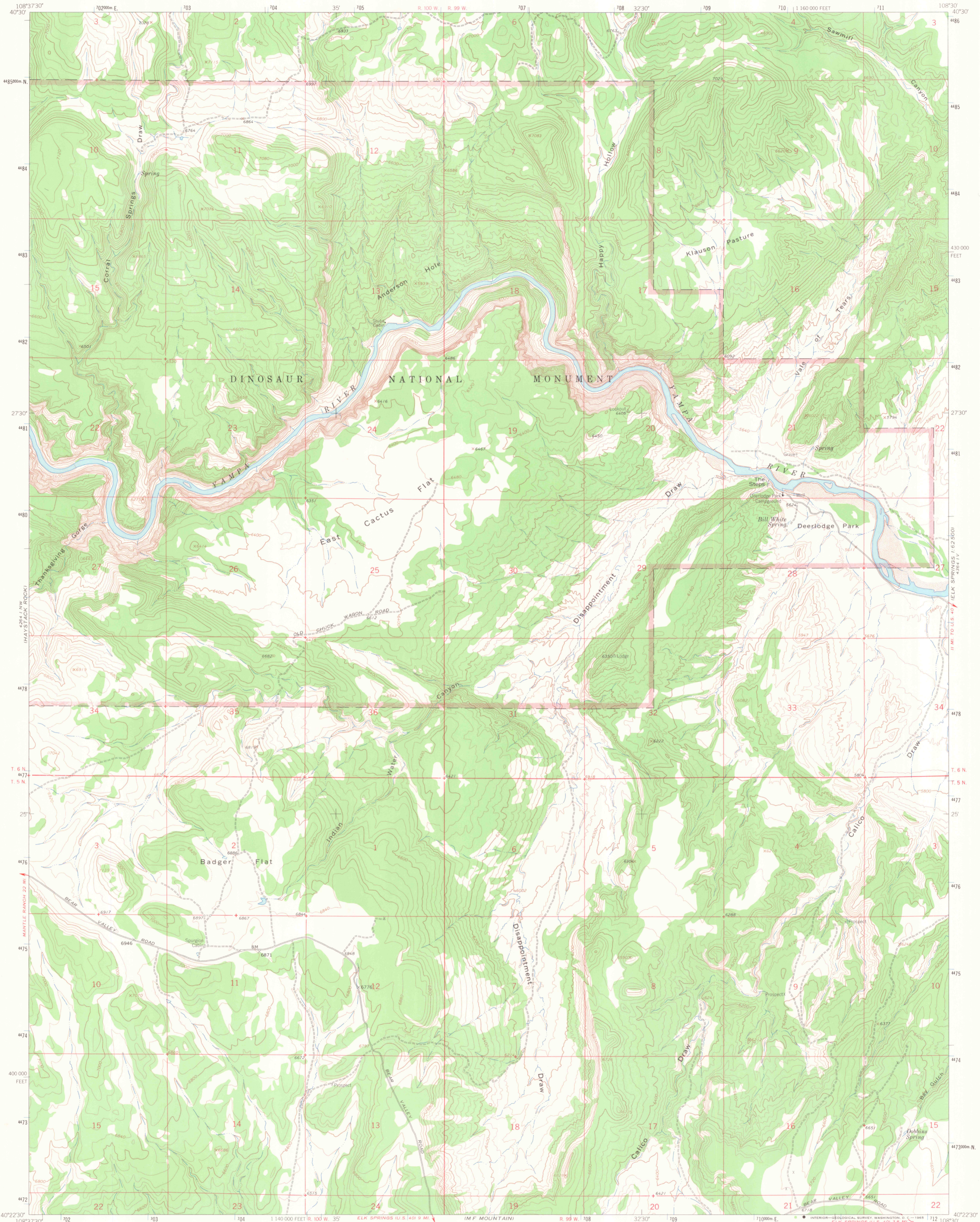


438 111
1:62,500

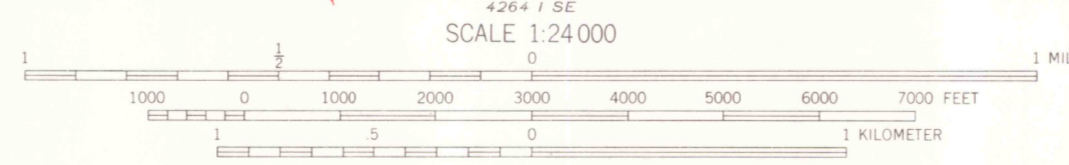
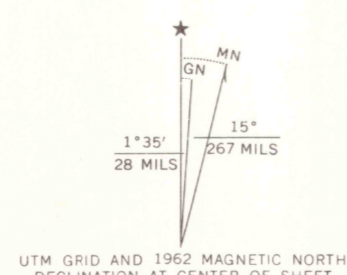


Mapped, edited, and published by the Geological Survey

Control by USGS and USC&GS

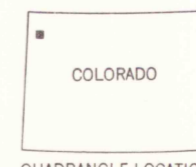
Topography by photogrammetric methods from aerial photographs taken 1961. Field checked 1962

Polyconic projection. 1927 North American datum. 10,000-foot grid based on Colorado coordinate system, north zone 1000-meter Universal Transverse Mercator grid ticks, zone 12, shown in blue. Fine red dashed lines indicate selected fence lines.



CONTOUR INTERVAL 40 FEET
DOTTED LINES REPRESENT 20-FOOT CONTOURS
DATUM IS MEAN SEA LEVEL

ROAD CLASSIFICATION
Light-duty ——— Unimproved dirt - - - - -



U. S. GOVT
DOC#

INDIAN WATER CANYON, COLO.
N4022.5-W10830.7.5

OCT 27

1962

AMS 4264 1 NE-SERIES V877

THIS MAP COMPLIES WITH NATIONAL MAP ACCURACY STANDARDS
FOR SALE BY U. S. GEOLOGICAL SURVEY, DENVER, COLORADO 80225, OR WASHINGTON, D. C. 20242
A FOLDER DESCRIBING TOPOGRAPHIC MAPS AND SYMBOLS IS AVAILABLE ON REQUEST

OFFICE COPY

LIBRARY USE ONLY

15000 CREVEXY
248 1 58

438 111
1:62,500