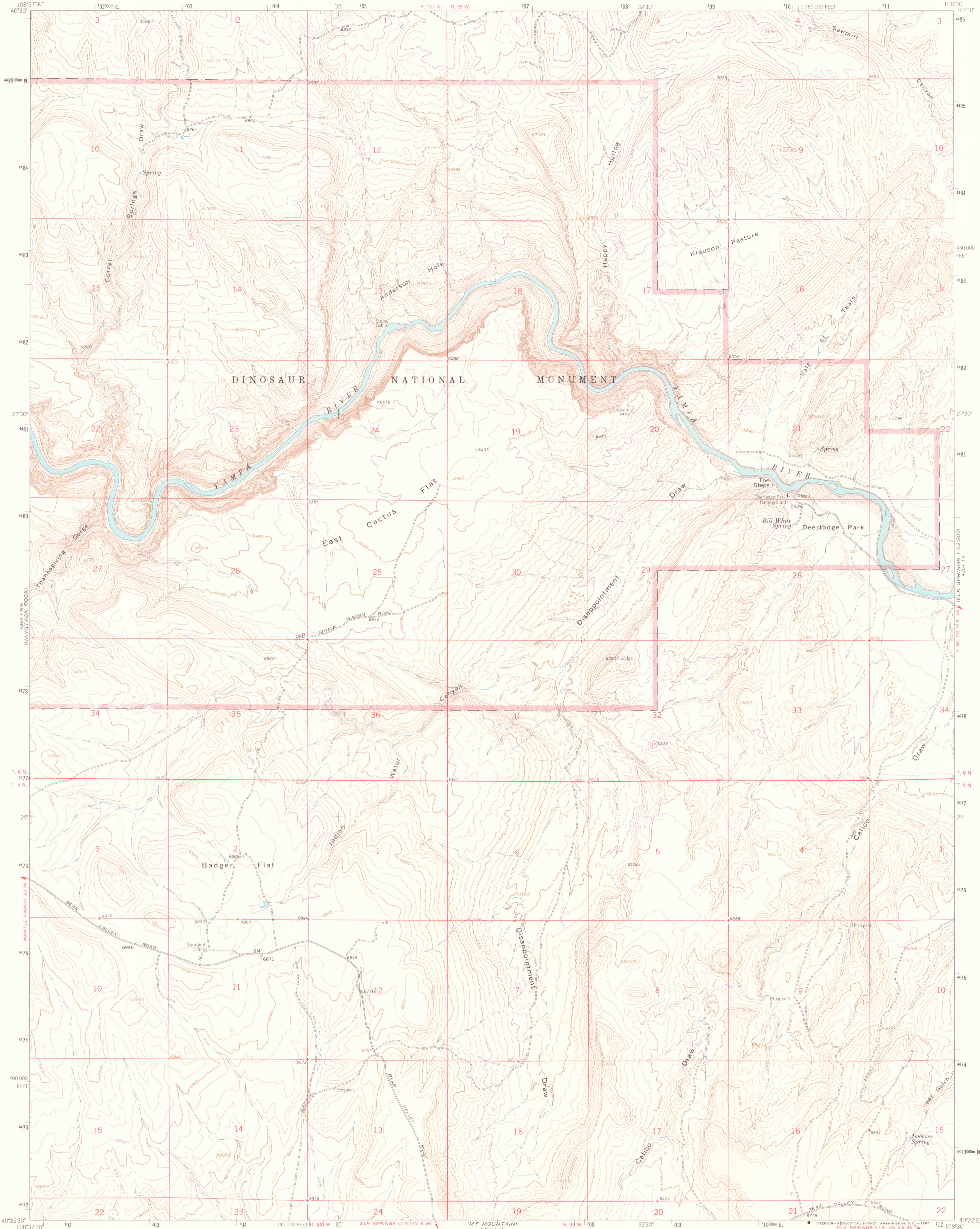
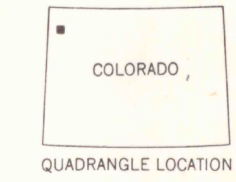
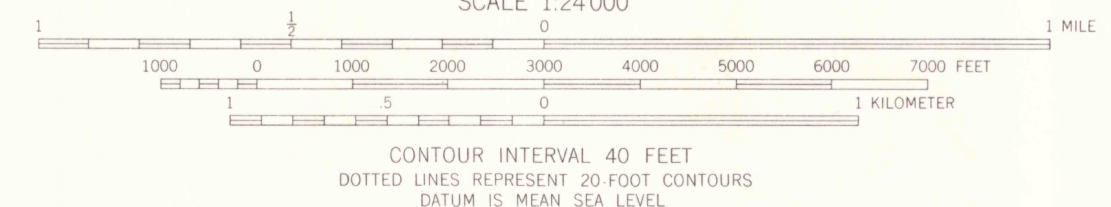
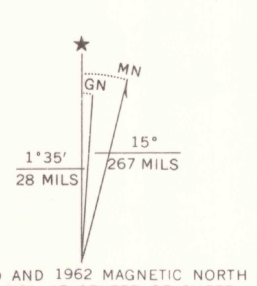


4287 11  
1:62,500  
LOPE MOUNTAIN



Mapped, edited, and published by the Geological Survey  
Control by USGS and US&GS  
Topography by photogrammetric methods from aerial photographs taken 1961. Field checked 1962  
Polyconic projection. 1927 North American datum  
10,000-foot grid based on Colorado coordinate system, north zone  
1000-meter Universal Transverse Mercator grid ticks, zone 12, shown in blue  
Fine red dashed lines indicate selected fence lines



ROAD CLASSIFICATION  
Light-duty ——— Unimproved dirt - - - - -

INDIAN WATER CANYON, COLO.  
N4022.5-W10830.7 5

THIS MAP COMPLIES WITH NATIONAL MAP ACCURACY STANDARDS  
FOR SALE BY U.S. GEOLOGICAL SURVEY, DENVER, COLORADO 80225, OR WASHINGTON, D. C. 20242  
A FOLDER DESCRIBING TOPOGRAPHIC MAPS AND SYMBOLS IS AVAILABLE ON REQUEST

MAY 1995  
MAP ROOM  
ARTHUR LAKES LIBRARY  
COLORADO SCHOOL OF MINES

AMS 4264 I NE—SERIES V877



LIBRARY USE ONLY  
3701  
C222  
S24  
U5  
OFFICE COPY

1962  
w/o  
c.5