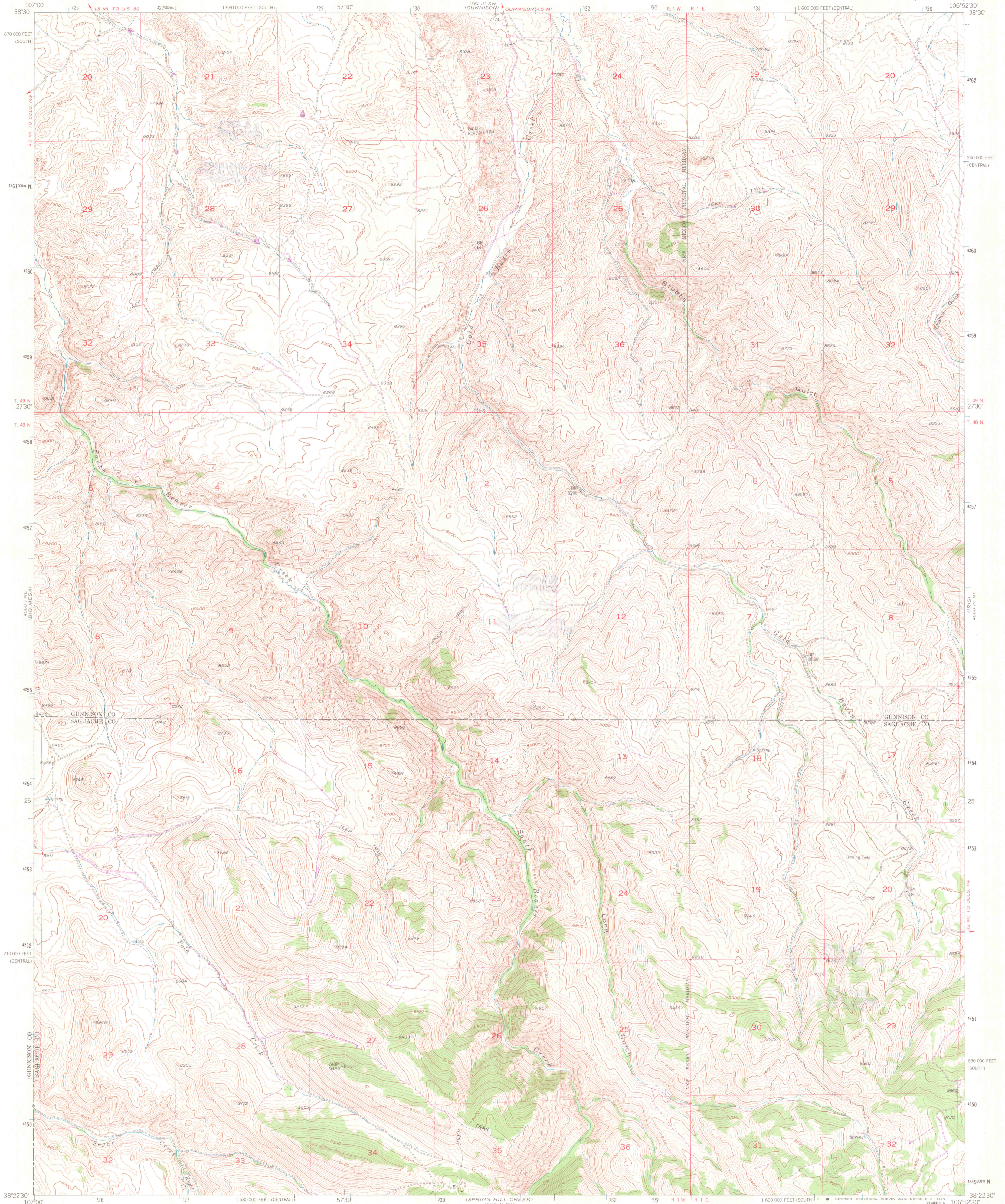
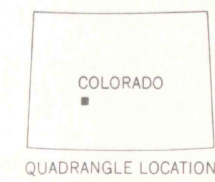
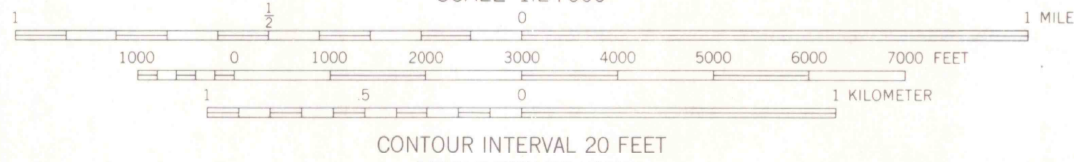
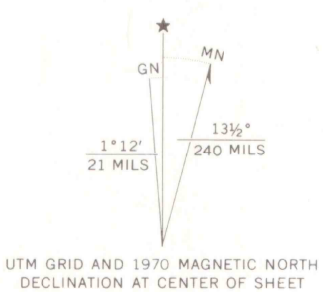


UNITED STATES
DEPARTMENT OF THE INTERIOR
GEOLOGICAL SURVEY

IRIS NW QUADRANGLE
COLORADO
7.5 MINUTE SERIES (TOPOGRAPHIC)



Mapped, edited, and published by the Geological Survey
Control by USGS and USC&GS
Topography from aerial photographs by multiplex methods
Aerial photographs taken 1950. Field check 1954
Polyconic projection. 1927 North American datum
10,000-foot grids based on Colorado coordinate system,
central and south zones
1000-meter Universal Transverse Mercator grid ticks,
zone 13, shown in blue
Revisions shown in purple compiled from aerial photographs
taken 1970. This information not field checked



ROAD CLASSIFICATION
Light duty ————— Unimproved dirt - - - - -

U.S. GOVT
DOCUMENTS
ARTHUR LAKES LIBRARY
COLORADO SCHOOL OF MINES
GOLDEN, CO 80401

IRIS NW, COLO.
N3822.5-W10652.5/7.5
1954
PHOTOREVISED 1970
AMS 4660 IV NW-SERIES V877

THIS MAP COMPLIES WITH NATIONAL MAP ACCURACY STANDARDS
FOR SALE BY U.S. GEOLOGICAL SURVEY, DENVER, COLORADO 80225, OR WASHINGTON, D.C. 20242
A FOLDER DESCRIBING TOPOGRAPHIC MAPS AND SYMBOLS IS AVAILABLE ON REQUEST

OFFICE COPY
LIBRARY USE ONLY