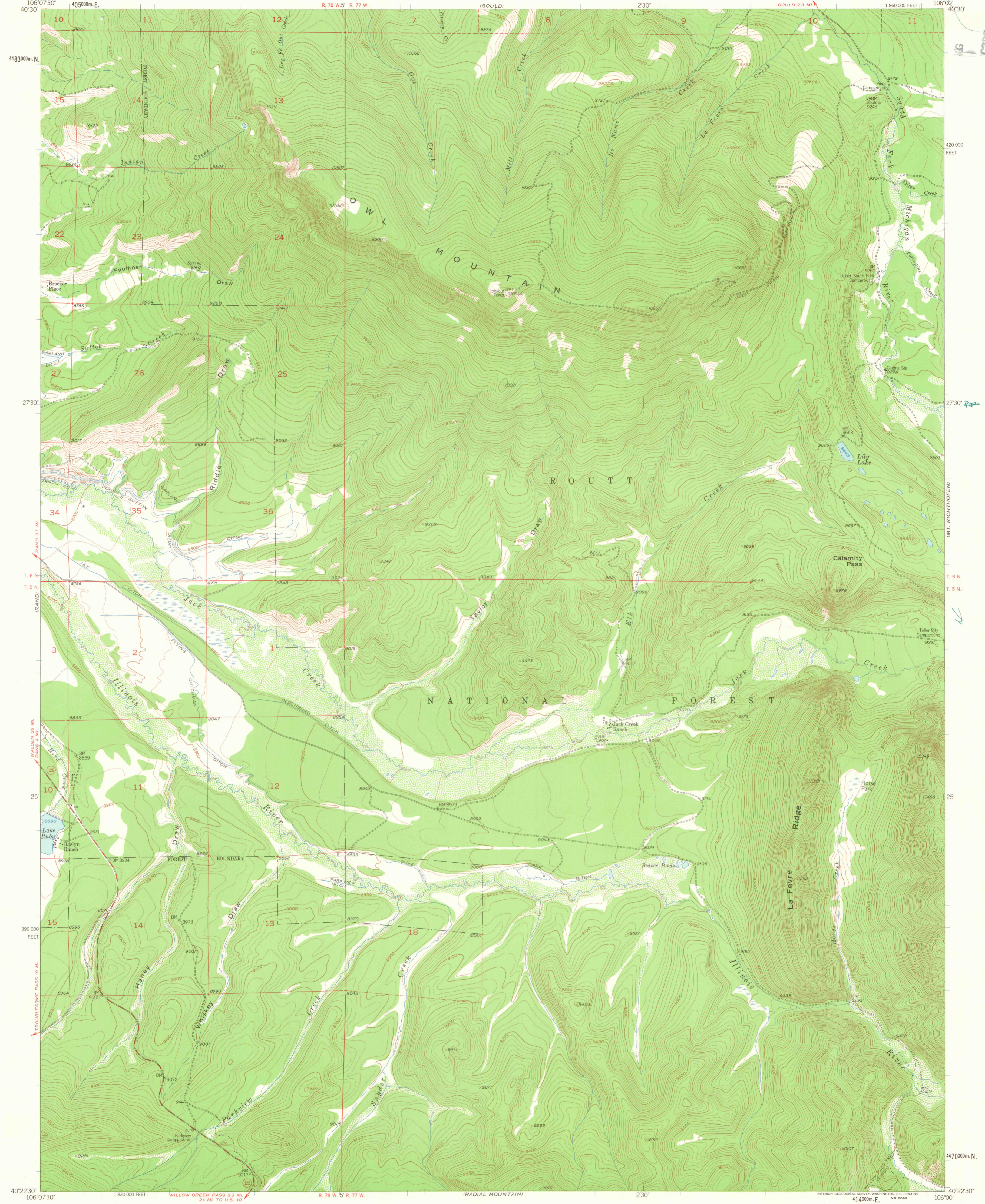
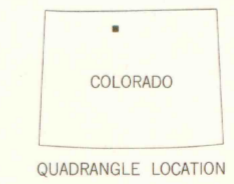
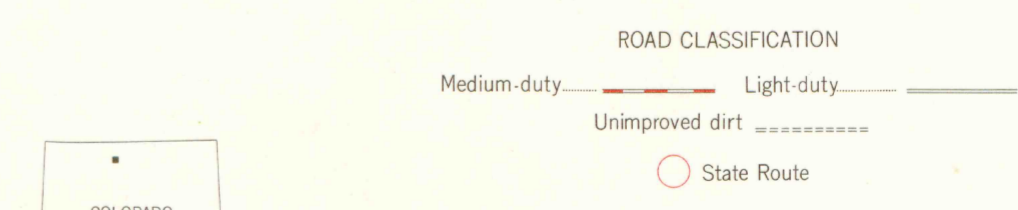
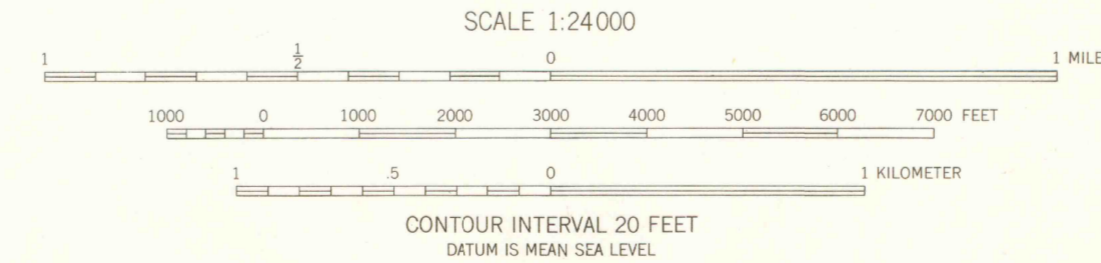


U5
Jack Creek Ranch
1956
C-1



Mapped, edited, and published by the Geological Survey as part of the Department of the Interior program for the development of the Missouri River Basin
Control by USGS and USC&GS
Topography from aerial photographs by multiple methods
Aerial photographs taken 1952. Field check 1956
Polyconic projection. 1927 North American datum
10,000-foot grid based on Colorado coordinate system, north zone
1000-meter Universal Transverse Mercator grid ticks, zone 13, shown in blue
Dashed land lines indicate approximate locations
Land lines are omitted in part of T. 5 and 6 N., R. 77 W. and T. 5 N., R. 78 W., because of insufficient data
Unchecked elevations are shown in brown



THIS MAP COMPLIES WITH NATIONAL MAP ACCURACY STANDARDS
FOR SALE BY U. S. GEOLOGICAL SURVEY, DENVER 25, COLORADO OR WASHINGTON 25, D. C.
A FOLDER DESCRIBING TOPOGRAPHIC MAPS AND SYMBOLS IS AVAILABLE ON REQUEST

JACK CREEK RANCH, COLO.
N4022.5—W10600/7.5
1956



SEP 3 1979
MAP ROOM
4UR LAKES LIBRARY

G 3700
s24
.G4
MAP ROOM
C-1

OFFICE COPY
LIBRARY USE ONLY