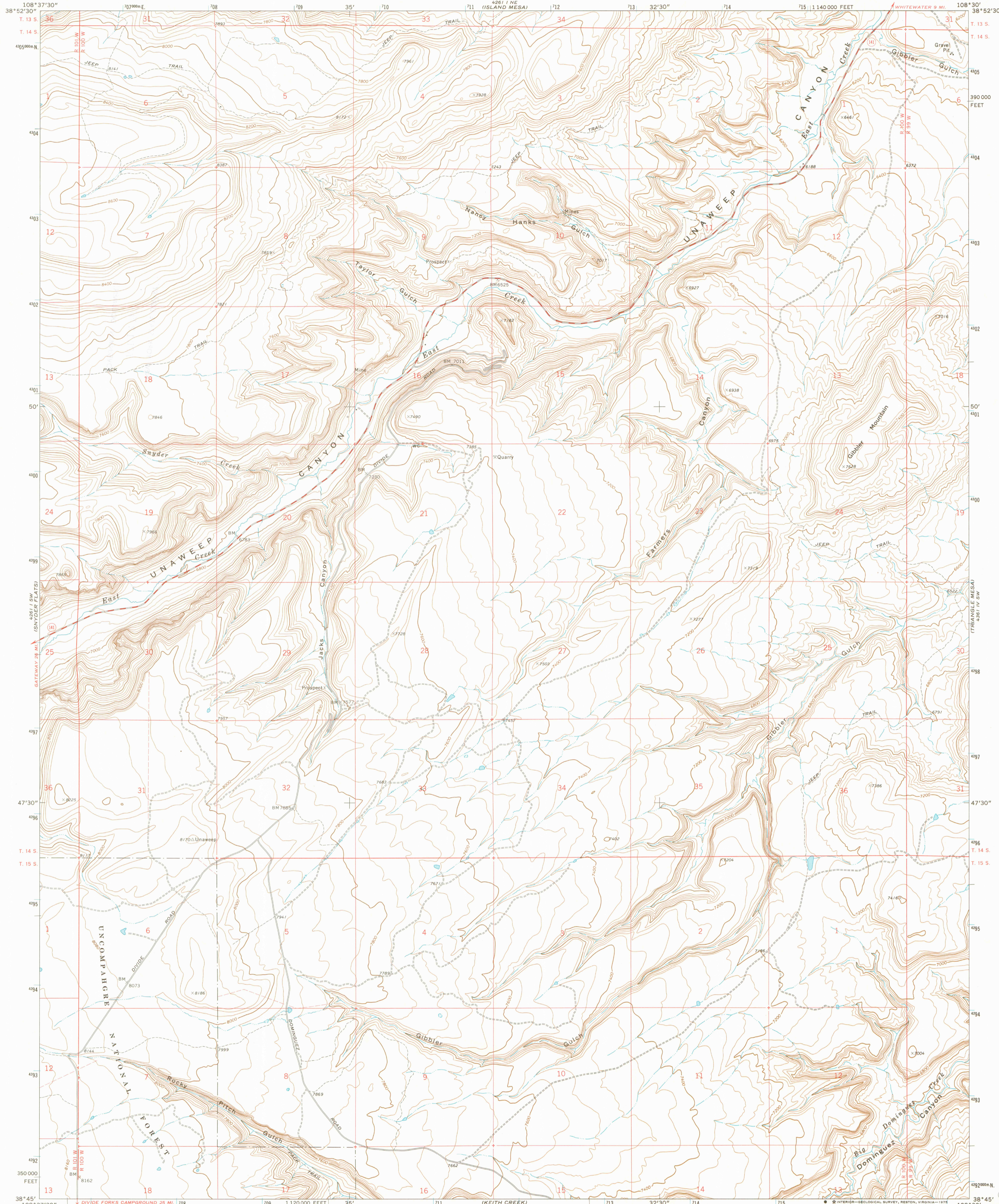
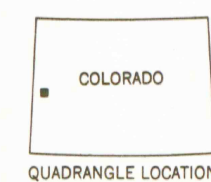
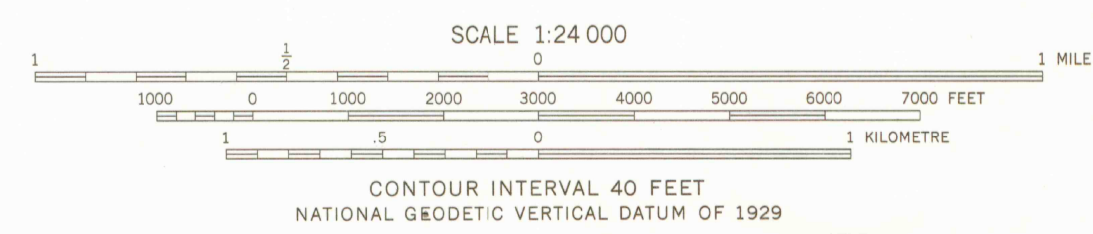
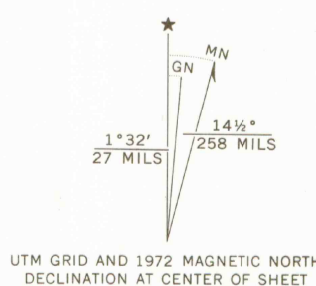


UNITED STATES
DEPARTMENT OF THE INTERIOR
GEOLOGICAL SURVEY

JACKS CANYON QUADRANGLE
COLORADO—MESA CO.
7.5 MINUTE SERIES (TOPOGRAPHIC)



Mapped by the U. S. Forest Service
Edited and published by the Geological Survey
Control by USGS, USC&GS, and the U. S. Forest Service
Topography by photogrammetric methods from aerial
photographs taken 1964. Field checked 1972
Projection and 10,000-foot grid ticks: Colorado
coordinate system, central zone (Lambert conformal conic)
1000-metre Universal Transverse Mercator grid ticks,
zone 12, shown in blue. 1927 North American datum
Fine red dashed lines indicate selected fence lines
Where omitted, land lines have not been established



ROAD CLASSIFICATION

Primary highway, hard surface	Light-duty road, hard or improved surface
Secondary highway, hard surface	Unimproved road
Interstate Route	U. S. Route
	State Route

THIS MAP COMPLIES WITH NATIONAL MAP ACCURACY STANDARDS
FOR SALE BY U.S. GEOLOGICAL SURVEY, DENVER, COLORADO 80225, OR RESTON, VIRGINIA 22092
A FOLDER DESCRIBING TOPOGRAPHIC MAPS AND SYMBOLS IS AVAILABLE ON REQUEST

LIBRARY
COLORADO SCHOOL OF MINES
GOLDEN, COLORADO

JACKS CANYON, COLO.
N3845-W10830/7.5
1972
AMS 4261 | SE—SERIES V877



OFFICE COPY

LIBRARY USE ONLY
G 3701
C222
S24
U5