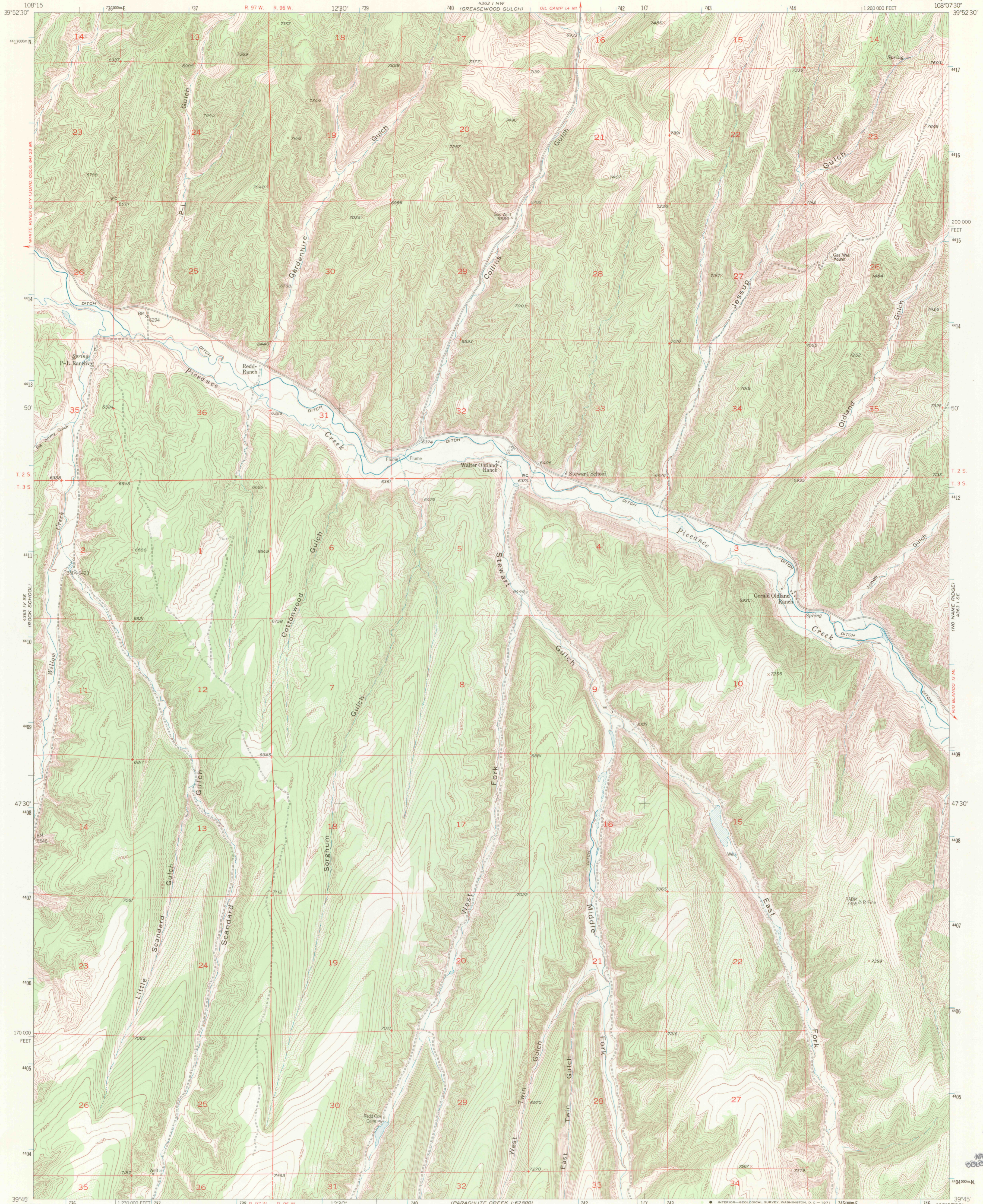


UNITED STATES  
DEPARTMENT OF THE INTERIOR  
GEOLOGICAL SURVEY

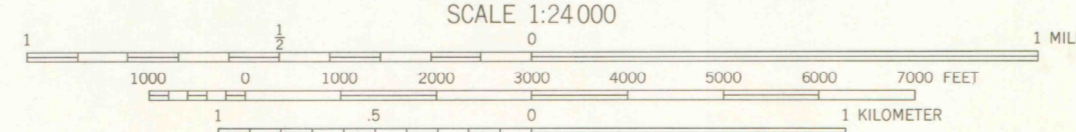
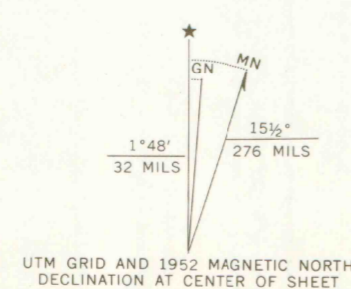
JESSUP GULCH QUADRANGLE  
COLORADO-RIO BLANCO CO.  
7.5 MINUTE SERIES (TOPOGRAPHIC)



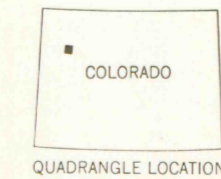
Mapped, edited, and published by the Geological Survey

Control by USGS and USC&GS  
Topography from aerial photographs by multiplex methods  
Aerial photographs taken 1948. Field check 1952  
Polyconic projection. 1927 North American datum  
10,000-foot grid based on Colorado coordinate system  
north zone

Dashed land lines indicate approximate locations  
Certain land lines are omitted in T. 3 S. - R. 96 W.  
because of insufficient data  
1000-meter Universal Transverse Mercator grid ticks,  
zone 12, shown in blue



CONTOUR INTERVAL 20 FEET  
DATUM IS MEAN SEA LEVEL



QUADRANGLE LOCATION

ROAD CLASSIFICATION  
Heavy-duty ——— 2 LANE 16 LANE Light-duty ———  
Medium-duty ——— 2 LANE 16 LANE Unimproved dirt - - - - -  
U. S. Route      State Route

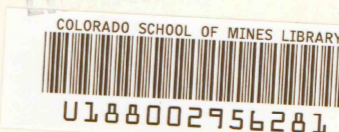
OFFICE COPY  
LIBRARY USE ONLY

JESSUP GULCH, COLO.  
N3945-W10807.5/7.5

1952

AMS 4363 1 SW-SERIES V877

THIS MAP COMPLIES WITH NATIONAL MAP ACCURACY STANDARDS  
FOR SALE BY U. S. GEOLOGICAL SURVEY, DENVER, COLORADO 80225, OR WASHINGTON, D. C. 20242  
A FOLDER DESCRIBING TOPOGRAPHIC MAPS AND SYMBOLS IS AVAILABLE ON REQUEST



AUG 06 1996  
MAP ROOM  
ARTHUR LAKES LIBRARY  
COLORADO SCHOOL OF MINES  
AMUEDO AND IVEY, INC.  
SUITE 829  
1660 S. ALBION STREET  
DENVER, COLORADO 80222