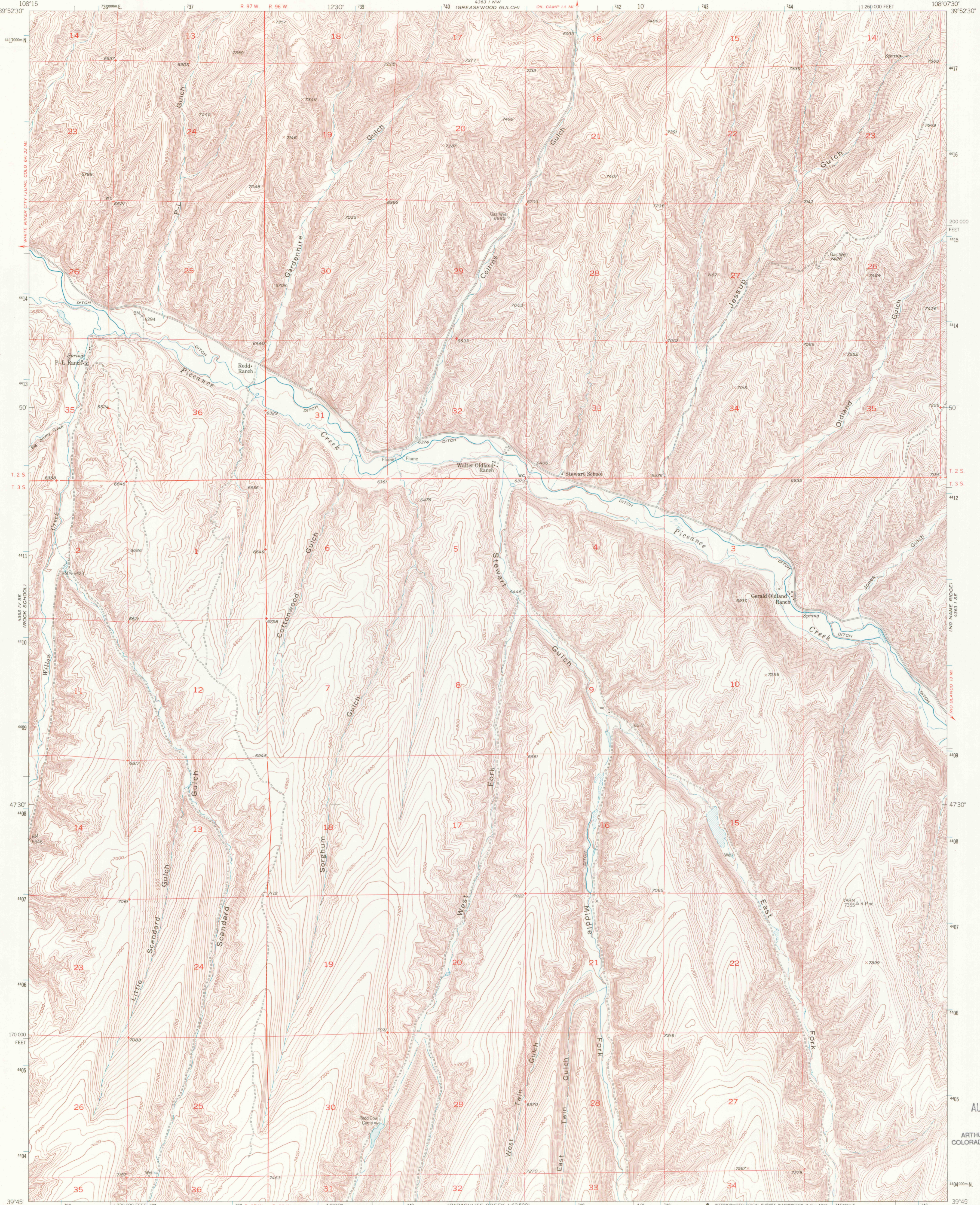
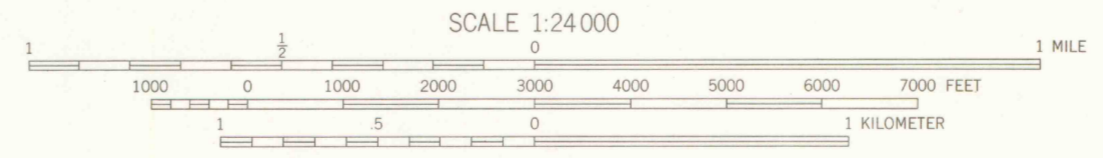
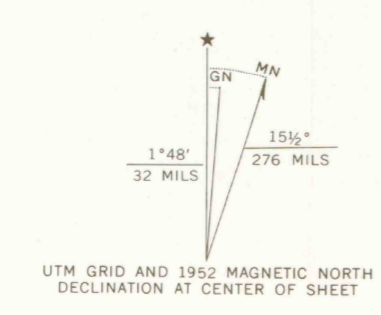


UNITED STATES  
DEPARTMENT OF THE INTERIOR  
GEOLOGICAL SURVEY

JESSUP GULCH QUADRANGLE  
COLORADO-RIO BLANCO CO.  
7.5 MINUTE SERIES (TOPOGRAPHIC)



Mapped, edited, and published by the Geological Survey  
Control by USGS and USC&GS  
Topography from aerial photographs by multiplex methods  
Aerial photographs taken 1948. Field check 1952  
Polyconic projection. 1927 North American datum  
10,000-foot grid based on Colorado coordinate system  
north zone  
Dashed land lines indicate approximate locations  
Certain land lines are omitted in T.3 S.-R.96 W.  
because of insufficient data  
1000-meter Universal Transverse Mercator grid ticks,  
zone 12, shown in blue



CONTOUR INTERVAL 20 FEET  
DATUM IS MEAN SEA LEVEL

THIS MAP COMPLIES WITH NATIONAL MAP ACCURACY STANDARDS  
FOR SALE BY U.S. GEOLOGICAL SURVEY, DENVER, COLORADO 80225, OR WASHINGTON, D. C. 20242  
A FOLDER DESCRIBING TOPOGRAPHIC MAPS AND SYMBOLS IS AVAILABLE ON REQUEST

ROAD CLASSIFICATION	
Heavy duty	Light duty
Medium-duty	Unimproved dirt
U. S. Route	State Route



OFFICE COPY

JESSUP GULCH, COLO.  
N3945-W10807.5/7.5  
1952  
AMS 4363 I SW-SERIES 9877

AMUEDO AND IVEY, INC.  
SUITE 829  
1660 S. ALBION STREET  
DENVER, COLORADO 80222

AUG 06 1996

MAP ROOM  
ARTHUR LAKES LIBRARY  
COLORADO SCHOOL OF MINES

G 370  
C22  
S24  
U5