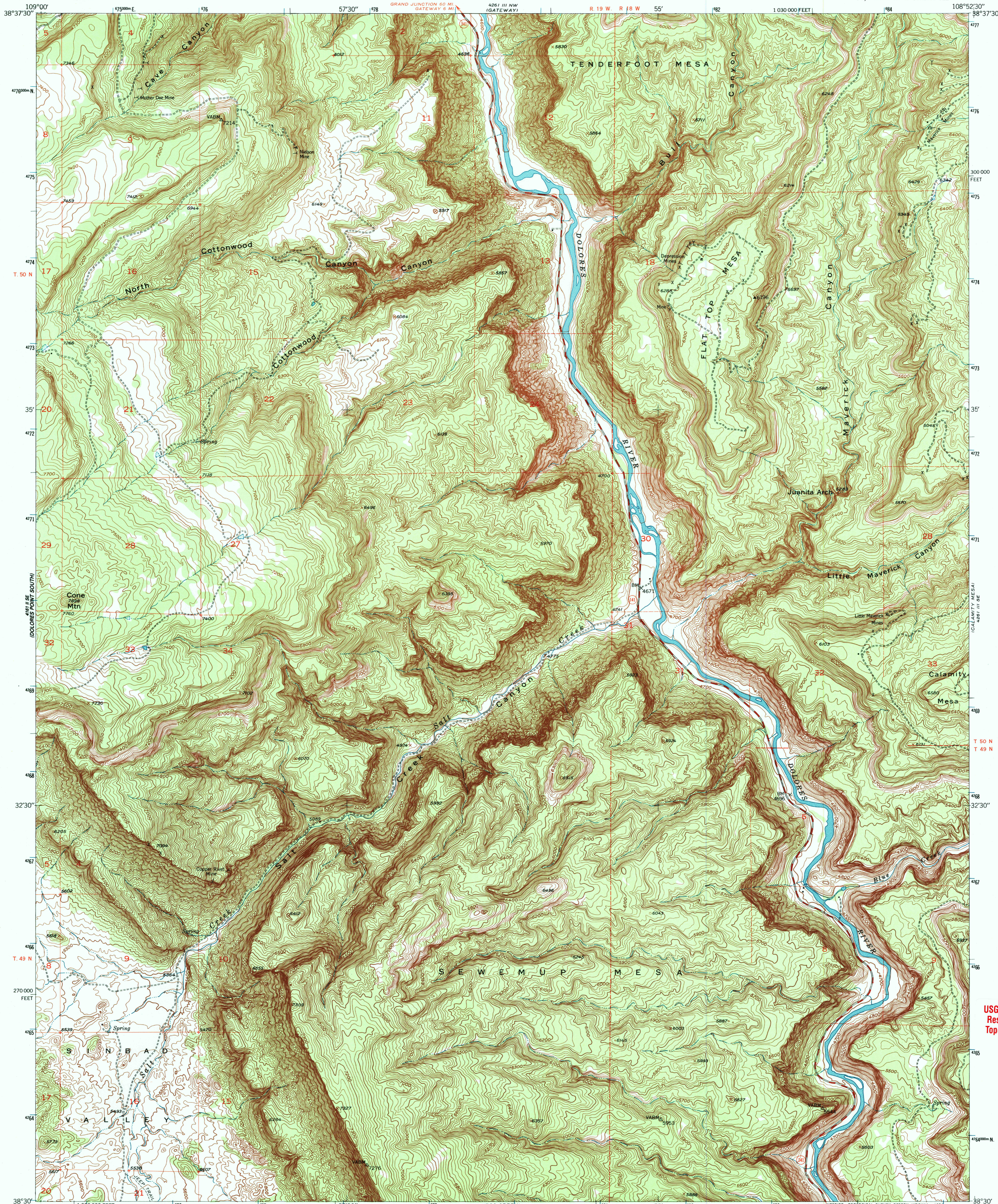


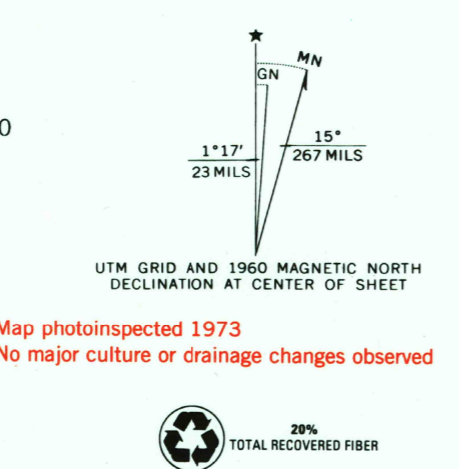


U.S. DEPARTMENT OF THE INTERIOR
U.S. GEOLOGICAL SURVEY

JUANITA ARCH QUADRANGLE
COLORADO—MESA CO.
7.5 MINUTE SERIES (TOPOGRAPHIC)
SW/4 GATEWAY 15' QUADRANGLE



Mapped, edited, and published by the Geological Survey
Control by USGS and USC&GS
Topography from aerial photographs by photogrammetric methods
Aerial photographs taken 1947. Revised by planetable surveys 1960
Polyconic projection. 1927 North American Datum
10,000-foot grid based on Colorado coordinate system,
central zone
1000-meter Universal Transverse Mercator grid ticks,
zone 12, shown in blue
Dashed land lines indicate approximate locations
Land lines unsurveyed in part of T. 49 N., Rs. 18 and 19 W.,
and T. 50 N., Rs. 18 and 19 W.
To place on the predicted North American Datum 1983
move the projection lines 5 meters north and
58 meters east as shown by dashed corner ticks



SCALE 1:24 000
CONTOUR INTERVAL 20 FEET
NATIONAL GEODETIC VERTICAL DATUM OF 1929
THIS MAP COMPLIES WITH NATIONAL MAP ACCURACY STANDARDS
FOR SALE BY U.S. GEOLOGICAL SURVEY, P.O. BOX 25286, DENVER, COLORADO 80225
A FOLDER DESCRIBING TOPOGRAPHIC MAPS AND SYMBOLS IS AVAILABLE ON REQUEST

ROAD CLASSIFICATION
Medium-duty — Light-duty
Unimproved dirt
State Route
JUANITA ARCH, COLO.
SW/4 GATEWAY 15' QUADRANGLE
38108-EB-TF-024
1960
PHOTOINSPECTED 1973
MAY 02 2005 DMA 4261 III SW-SERIES V877

USGS Library
Reston, VA
Topo Archive

