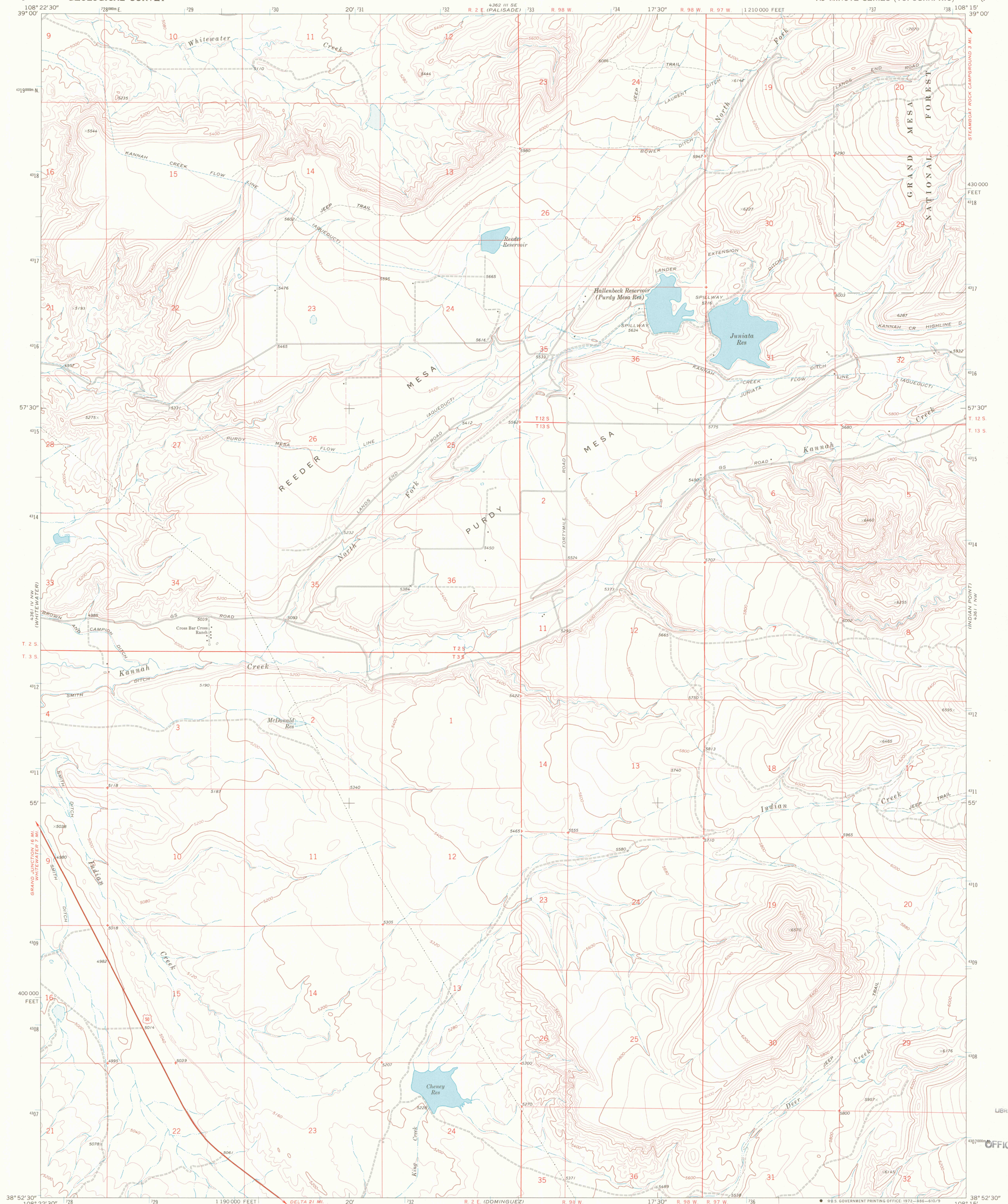


UNITED STATES  
DEPARTMENT OF THE INTERIOR  
GEOLOGICAL SURVEY

JUNIATA RESERVOIR QUADRANGLE  
COLORADO—MESA CO.  
7.5 MINUTE SERIES (TOPOGRAPHIC)



Mapped, edited, and published by the Geological Survey

Control by USGS and USC&GS

Topography by photogrammetric methods from aerial

photographs taken 1968. Field checked 1969

Polyconic projection. 1927 North American datum

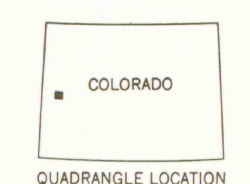
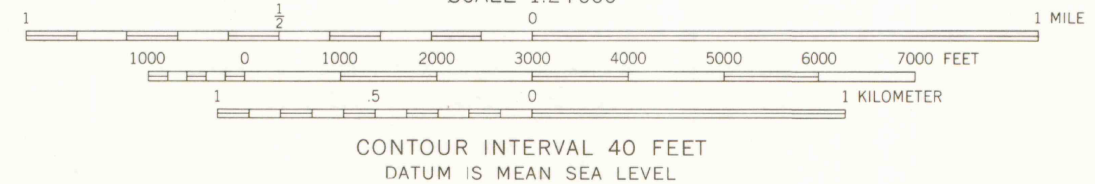
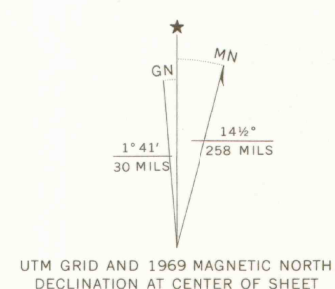
10,000-foot grid based on Colorado coordinate system,

central zone

1000-meter Universal Transverse Mercator grid ticks,

zone 12, shown in blue

Fine red dashed lines indicate selected fence lines



ROAD CLASSIFICATION  
Primary highway, all weather, Light-duty road, all weather,  
hard surface, improved surface  
Unimproved road, fair or dry  
weather  
U. S. Route

THIS MAP COMPLIES WITH NATIONAL MAP ACCURACY STANDARDS  
FOR SALE BY U. S. GEOLOGICAL SURVEY, DENVER, COLORADO 80225, OR WASHINGTON, D. C. 20242  
A FOLDER DESCRIBING TOPOGRAPHIC MAPS AND SYMBOLS IS AVAILABLE ON REQUEST



LIBRARY  
COLORADO SCHOOL OF MINES  
GOLDEN, COLORADO

JUNIATA RESERVOIR, COLO.  
N3852.5—W10815.7.5

1969

AMS 4361 IV NE—SERIES V877

G  
3701  
C222  
S24  
U5