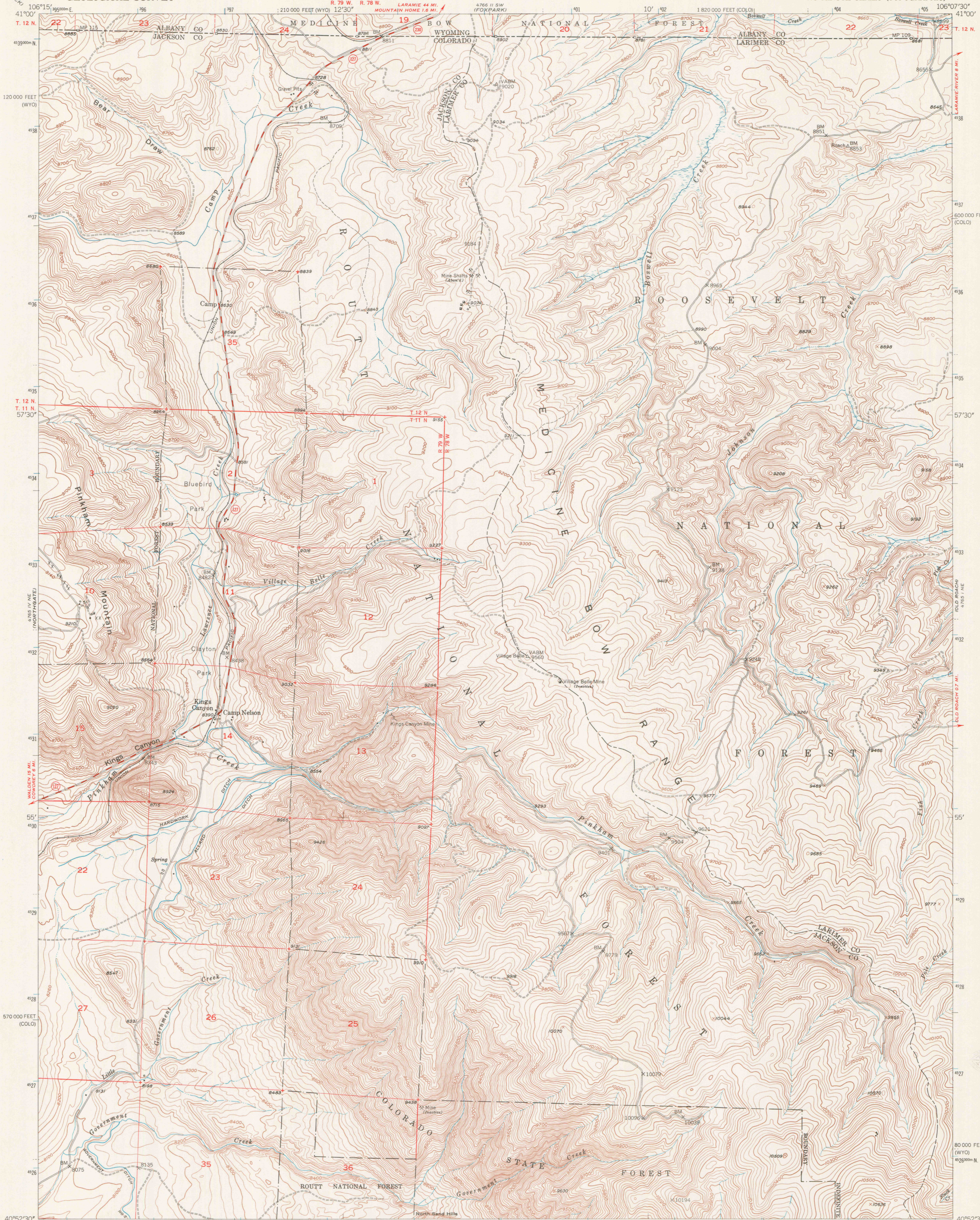
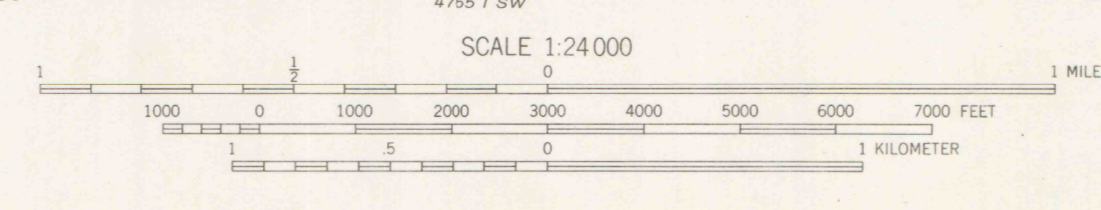
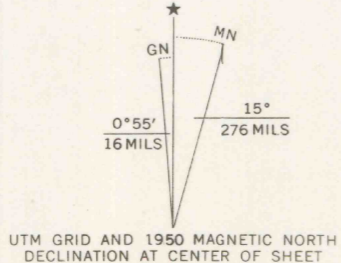


UNITED STATES
DEPARTMENT OF THE INTERIOR
GEOLOGICAL SURVEY

KINGS CANYON QUADRANGLE
COLORADO-WYOMING
7.5 MINUTE SERIES (TOPOGRAPHIC)



Mapped, edited, and published by the Geological Survey as part of the Department of the Interior program for the development of the Missouri River Basin
Control by USGS and USC&GS
Topography from aerial photographs by multiplex methods
Aerial photographs taken July 1947. Field check 1950
Polyconic projection. 1927 North American datum
10,000-foot grids based on Colorado north zone and Wyoming east zone rectangular coordinate systems
Dashed land lines indicate approximate location
Land lines omitted in T. 11 N. - R. 78 W., and in part of T. 12 N. - R. 78 W. and T. 12 N. - R. 79 W. because of insufficient data.
1000-meter Universal Transverse Mercator grid ticks, zone 13, shown in blue



THIS MAP COMPLIES WITH NATIONAL MAP ACCURACY STANDARDS
FOR SALE BY U.S. GEOLOGICAL SURVEY, DENVER, COLORADO 80225 OR WASHINGTON, D.C. 20242
A FOLDER DESCRIBING TOPOGRAPHIC MAPS AND SYMBOLS IS AVAILABLE ON REQUEST

ROAD CLASSIFICATION

Medium-duty	Light-duty
Unimproved dirt	State Route

KINGS CANYON, COLO.-WYO.
N4052.5-W10607.5/7.5
1950
AMS 4765 1 NW-SERIES V877

NOV 27 2006
ARTHUR L. ...
G 3700
624
.64
MAP ROOM