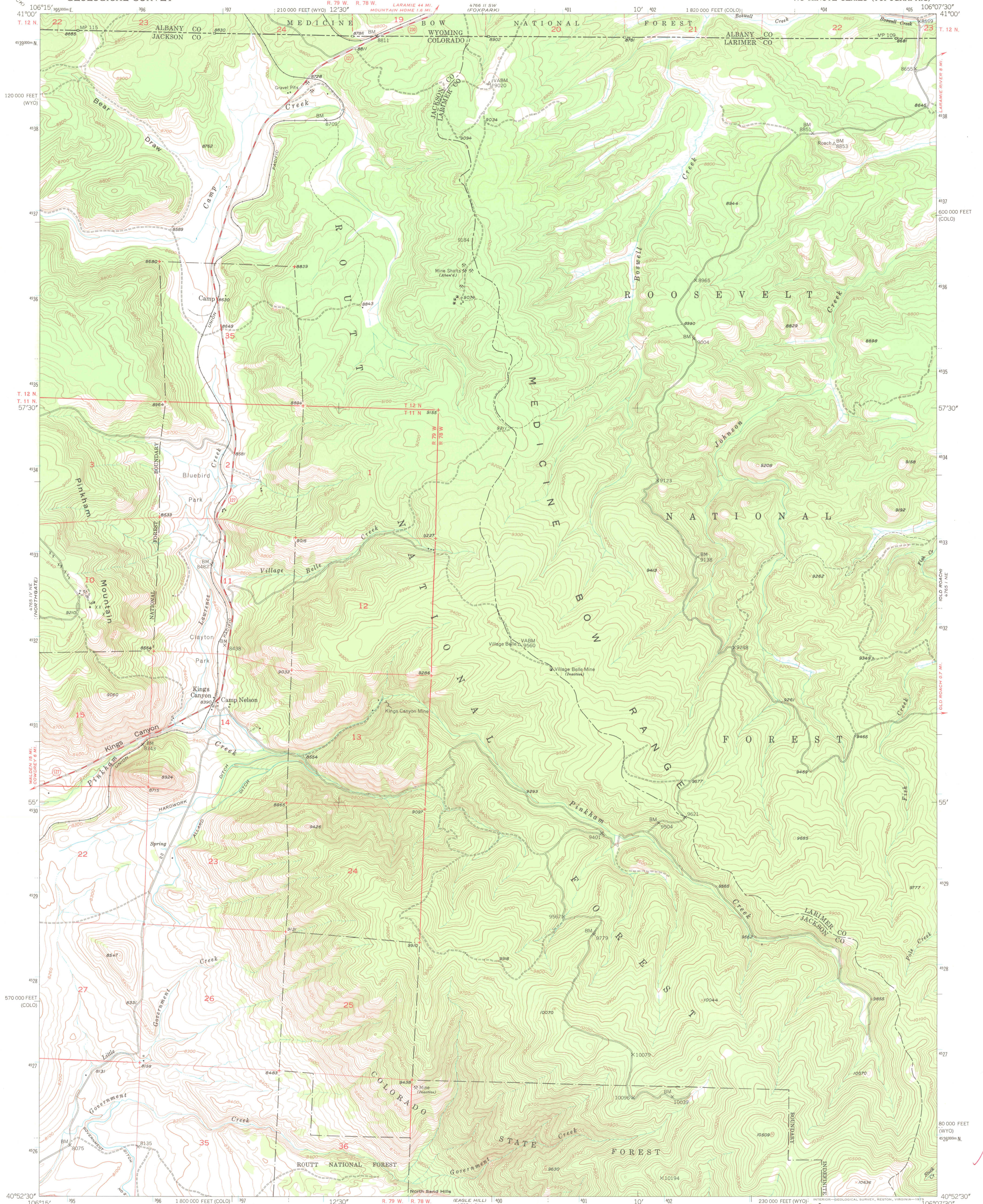


UNITED STATES  
DEPARTMENT OF THE INTERIOR  
GEOLOGICAL SURVEY

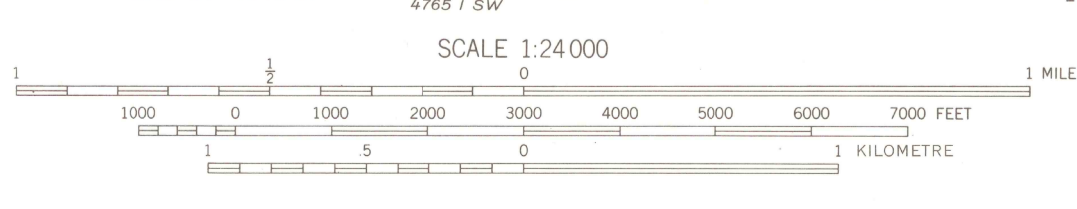
KINGS CANYON QUADRANGLE  
COLORADO-WYOMING  
7.5 MINUTE SERIES (TOPOGRAPHIC)



Mapped, edited, and published by the Geological Survey as part of the Department of the Interior program for the development of the Missouri River Basin. Control by USGS and USC&GS.

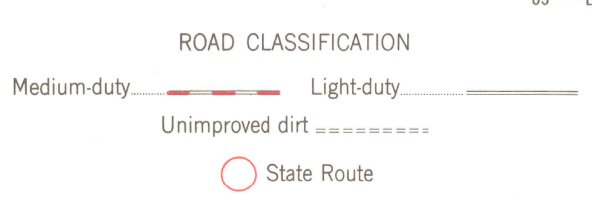
Topography from aerial photographs by multiplex methods. Aerial photographs taken July 1947. Field check 1950. Polyconic projection. 1927 North American datum. 10,000-foot grids based on Colorado north zone and Wyoming east zone rectangular coordinate systems.

Dashed land lines indicate approximate location. Land lines omitted in T. 11 N. - R. 78 W., and in part of T. 12 N. - R. 78 W. and T. 12 N. - R. 79 W. because of insufficient data. 1000-metre Universal Transverse Mercator grid ticks, zone 13, shown in blue.



CONTOUR INTERVAL 20 FEET  
NATIONAL GEODETIC VERTICAL DATUM OF 1929

THIS MAP COMPLIES WITH NATIONAL MAP ACCURACY STANDARDS FOR SALE BY U. S. GEOLOGICAL SURVEY, DENVER, COLORADO 80225, OR RESTON, VIRGINIA 22092. A FOLDER DESCRIBING TOPOGRAPHIC MAPS AND SYMBOLS IS AVAILABLE ON REQUEST.



KINGS CANYON, COLO.-WYO.  
N4052.5-W10607.5/7.5

1950

AMS 4765 1 NW—SERIES V877

FILE COPY  
JUN 23 1975  
MAP INFORMATION OFFICE  
GEOLOGICAL SURVEY