

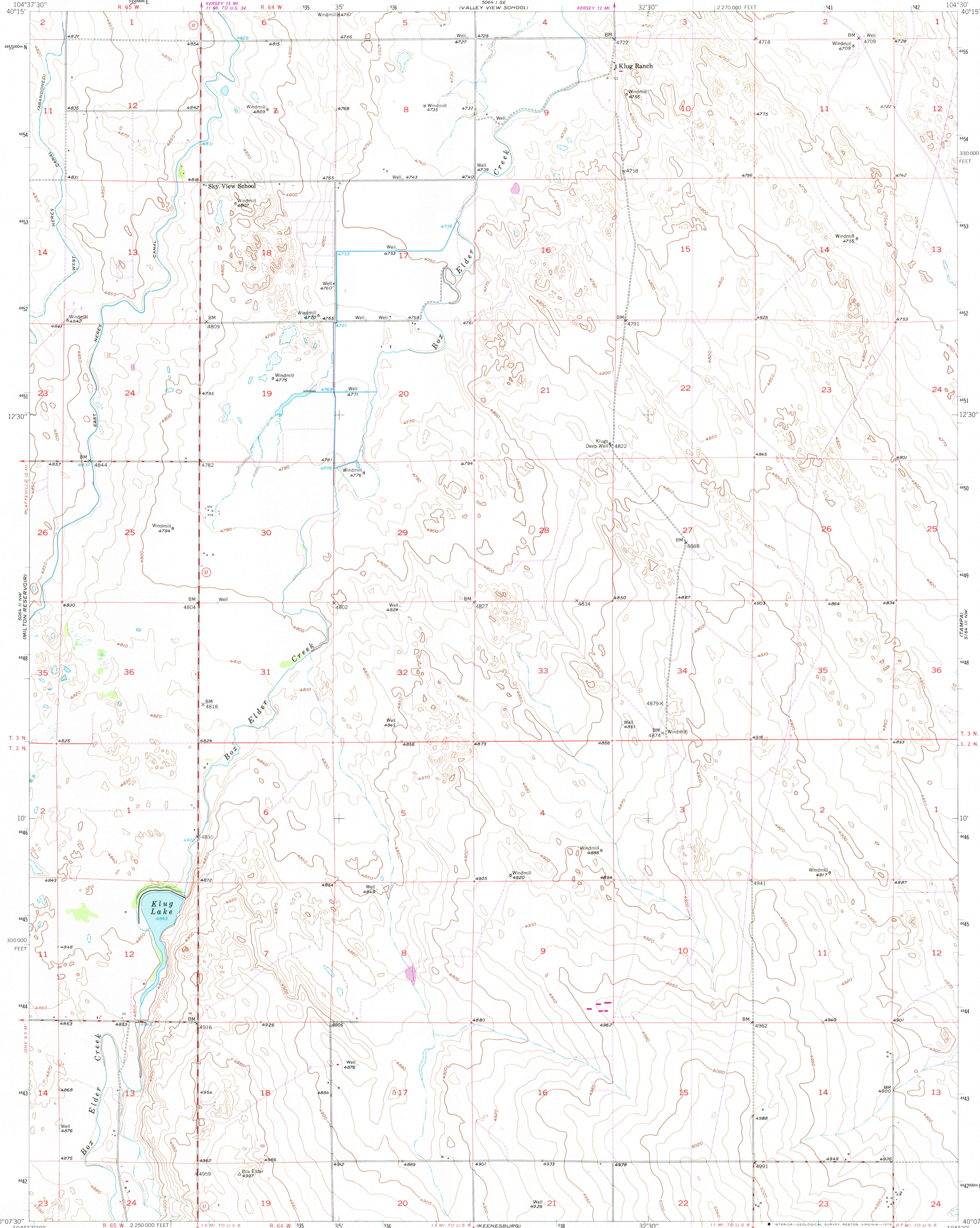
5064 5/6
1/4 SALE

UNITED STATES
DEPARTMENT OF THE INTERIOR
GEOLOGICAL SURVEY

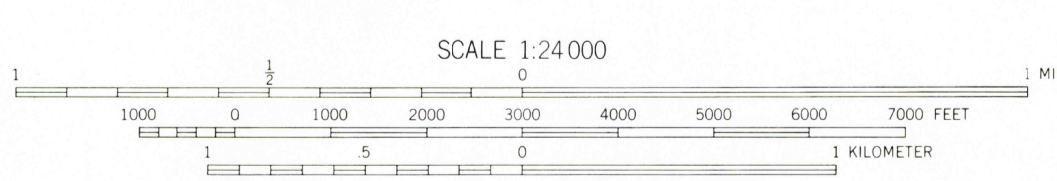
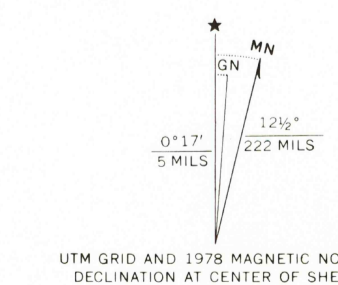


KLUG RANCH QUADRANGLE
COLORADO-WELD CO.
7.5 MINUTE SERIES (TOPOGRAPHIC)

5/6 1/4 SW
1/4

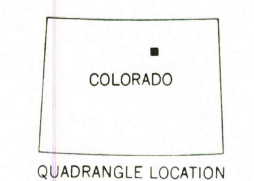


Mapped, edited, and published by the Geological Survey as part of the Department of the Interior program for the development of the Missouri River Basin
Control by USGS and NOS/NOAA
Culture and drainage in part compiled from aerial photographs taken October 1948 and July-August 1949
Topography by plane-table methods: 1950
Polyconic projection: 1927 North American datum
10,000-foot grid based on Colorado coordinate system, north zone
1000-meter Universal Transverse Mercator grid ticks, zone 13, shown in blue
Revisions shown in purple compiled from aerial photographs taken 1975 and other source data. This information not field checked. Map edited 1978



CONTOUR INTERVAL 10 FEET
NATIONAL GEODETIC VERTICAL DATUM OF 1929

THIS MAP COMPLIES WITH NATIONAL MAP ACCURACY STANDARDS
FOR SALE BY U. S. GEOLOGICAL SURVEY, DENVER, COLORADO 80225, OR RESTON, VIRGINIA 22092
A FOLDER DESCRIBING TOPOGRAPHIC MAPS AND SYMBOLS IS AVAILABLE ON REQUEST



ROAD CLASSIFICATION

HARD-SURFACE ALL WEATHER ROADS	DRY WEATHER ROADS
Heavy-duty 2 LANE 16 LANE	Improved dirt
Medium-duty 2 LANE 16 LANE	Unimproved dirt
Loose-surface, graded, or narrow hard-surface	
U. S. Route	State Route

KLUG RANCH, COLO.
N4007.5-W10430/7.5
1950
PHOTOREVISED 1978
DMA 5064 II NE-SERIES V877

USGS
Historical File
National Mapping Div.

7750
MAR 2 1981