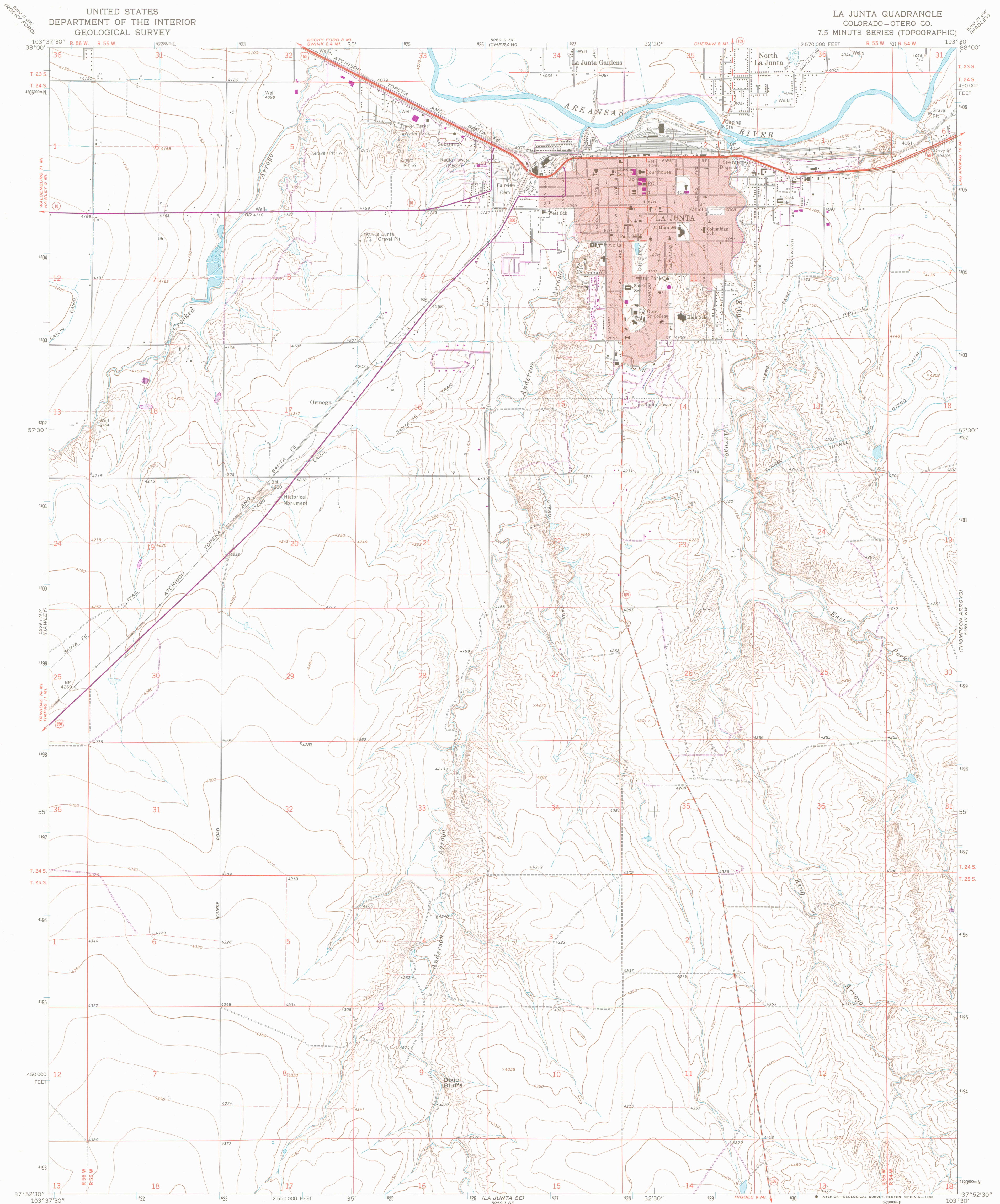


UNITED STATES
DEPARTMENT OF THE INTERIOR
GEOLOGICAL SURVEY

LA JUNTA QUADRANGLE
COLORADO—OTERO CO.
7.5 MINUTE SERIES (TOPOGRAPHIC)



Mapped, edited, and published by the Geological Survey

Control by USGS and NOS/NOAA

Topography by photogrammetric methods from aerial photographs taken 1964. Field checked 1966

Polycyclic projection. 1927 North American Datum
10,000-foot grid based on Colorado coordinate system,
south zone
1000-meter Universal Transverse Mercator grid ticks,
zone 13, shown in blue

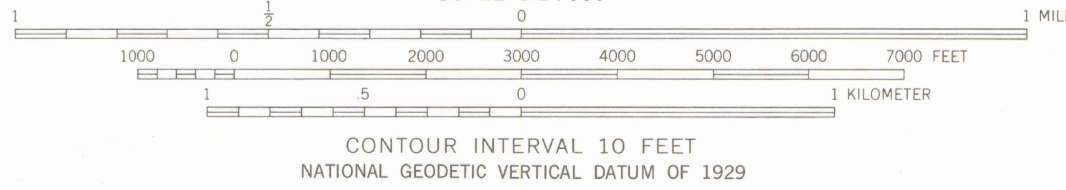
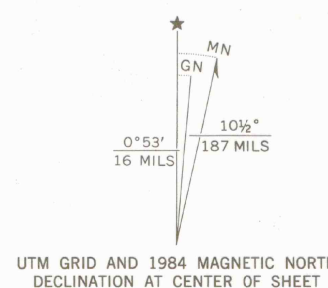
Red tint indicates areas in which only landmark buildings are shown

Fine red dashed lines indicate selected fence lines

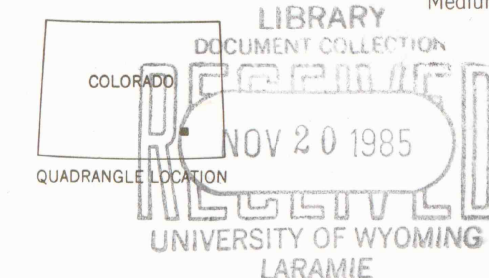
To place on the predicted North American Datum 1983

move the projection lines 2 meters north and
44 meters east as shown by dashed corner ticks

Revisions shown in purple and woodland compiled from
aerial photographs taken 1983 and other source data
This information not field checked. Map edited 1984



THIS MAP COMPLIES WITH NATIONAL MAP ACCURACY STANDARDS
FOR SALE BY U. S. GEOLOGICAL SURVEY, DENVER, COLORADO 80225, OR RESTON, VIRGINIA 22092
A FOLDER DESCRIBING TOPOGRAPHIC MAPS AND SYMBOLS IS AVAILABLE ON REQUEST



ROAD CLASSIFICATION
Heavy-duty ——— Light-duty ———
Medium-duty ——— Unimproved dirt ———
U. S. Route ——— State Route ———

GEOLOGICAL SURVEY OF WYOMING
LA JUNTA, COLO.
37103-H5-TF-024

1966
PHOTOREVISED 1984
DMA 5259 1 NE—SERIES V877