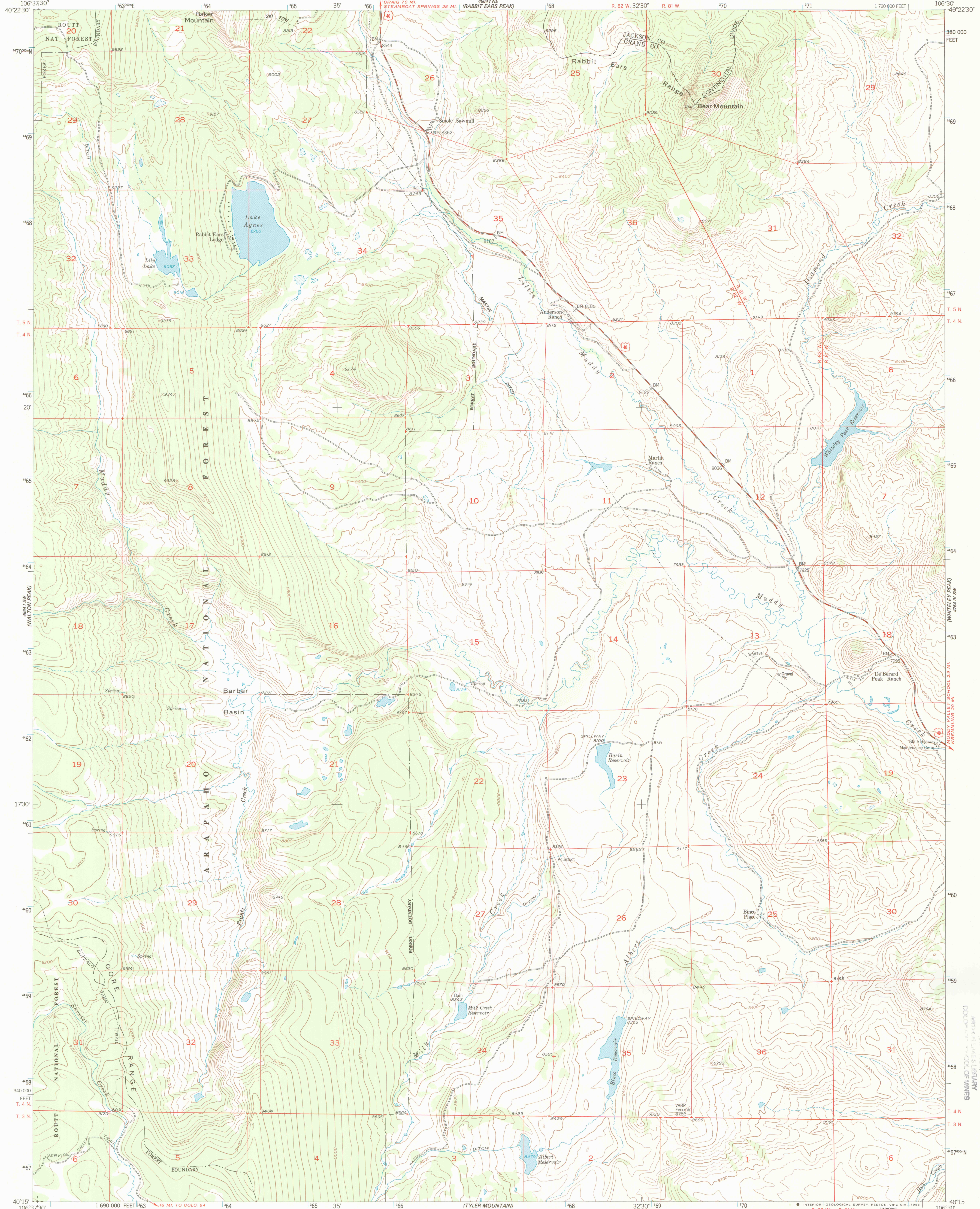


UNITED STATES
DEPARTMENT OF THE INTERIOR
GEOLOGICAL SURVEY

LAKE AGNES QUADRANGLE
COLORADO
7.5 MINUTE SERIES (TOPOGRAPHIC)



Mapped, edited, and published by the Geological Survey as part of the Department of the Interior program for the development of the Missouri River Basin Control by USGS and USC&GS

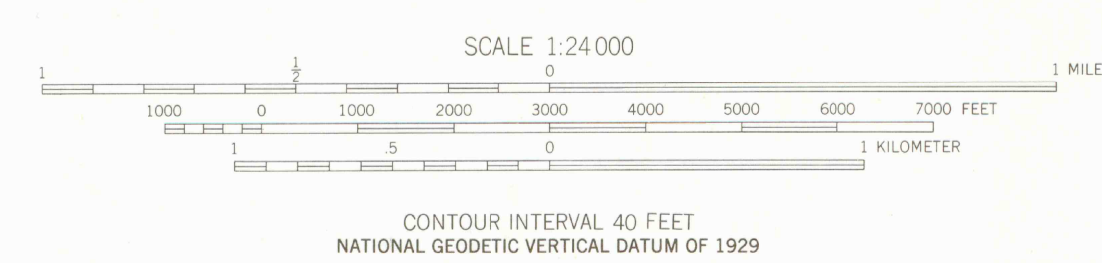
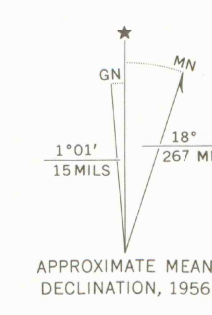
Topography from aerial photographs by multiplex methods Aerial photographs taken 1952. Field check 1956

Polyconic projection. 1927 North American Datum 10,000-foot grid based on Colorado coordinate system, north zone

1000-meter Universal Transverse Mercator grid ticks, zone 13, shown in blue

To place on the predicted North American Datum 1983 move the projection lines 6 meters north and 51 meters east as shown by dashed corner ticks

There may be private inholdings within the boundaries of the National or State reservations shown on this map



COLORADO
QUADRANGLE LOCATION

OFFICE COPY
LIBRARY USE ONLY

NETLINE MOUNTAINING
303 492-8866

LAKE AGNES, COLO.
40106-C5-TF-024
1956
DMA 4664 1 SE-SERIES V877

APR 28 2005

APR 28 2005

6 3700
c24
.G4
MAP ROOM