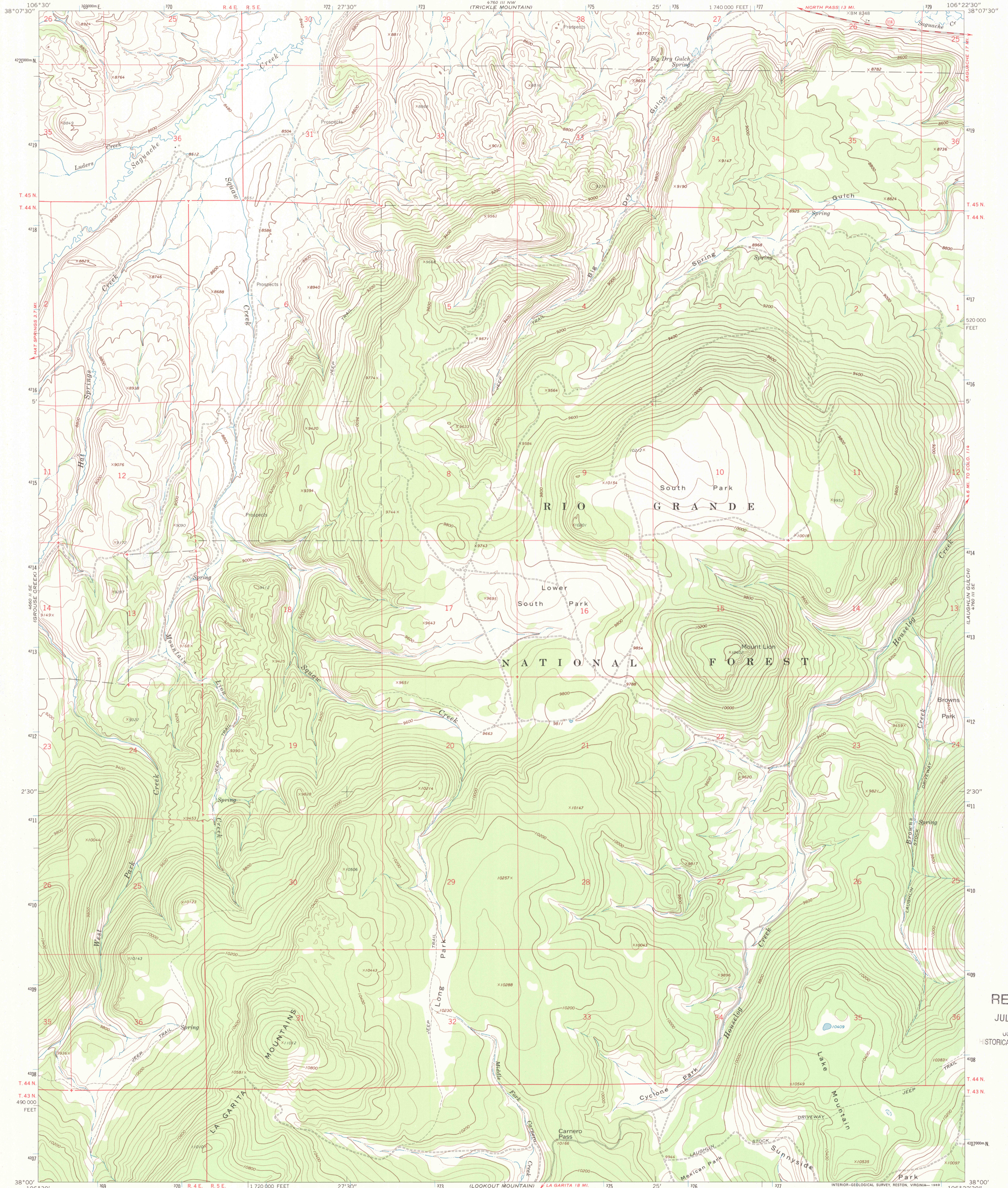


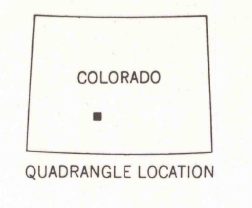
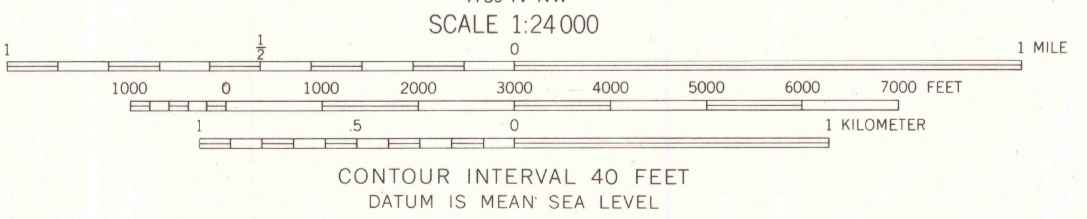
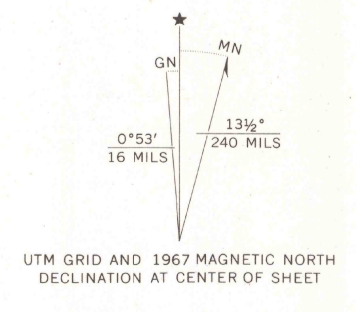


U.S. DEPARTMENT OF THE INTERIOR  
U.S. GEOLOGICAL SURVEY

LAKE MOUNTAIN QUADRANGLE  
COLORADO—SAGUACHE CO.  
7.5 MINUTE SERIES (TOPOGRAPHIC)



Mapped by the U. S. Forest Service  
Edited and published by the Geological Survey  
Control by USGS, USC&GS, and U. S. Forest Service  
Topography by photogrammetric methods from aerial  
photographs taken 1961. Field checked by USGS 1967  
Polyconic projection. 1927 North American datum  
10,000-foot grid based on Colorado coordinate system,  
south zone.  
1000-meter Universal Transverse Mercator grid ticks,  
zone 13, shown in blue  
Certain land lines are omitted because of insufficient data



ROAD CLASSIFICATION  
Medium-duty ——— Light-duty ———  
Unimproved dirt - - - - -  
State Route ○

LAKE MOUNTAIN, COLO.  
N3800—W10622.5/7.5

1967

AMS 4760 III SW—SERIES V877

THIS MAP COMPLIES WITH NATIONAL MAP ACCURACY STANDARDS  
FOR SALE BY U.S. GEOLOGICAL SURVEY, P.O. BOX 25286, DENVER, COLORADO 80225  
A FOLDER DESCRIBING TOPOGRAPHIC MAPS AND SYMBOLS IS AVAILABLE ON REQUEST

RECEIVED  
JUL 31 2001  
HISTORICAL MAP ARCHIVES

