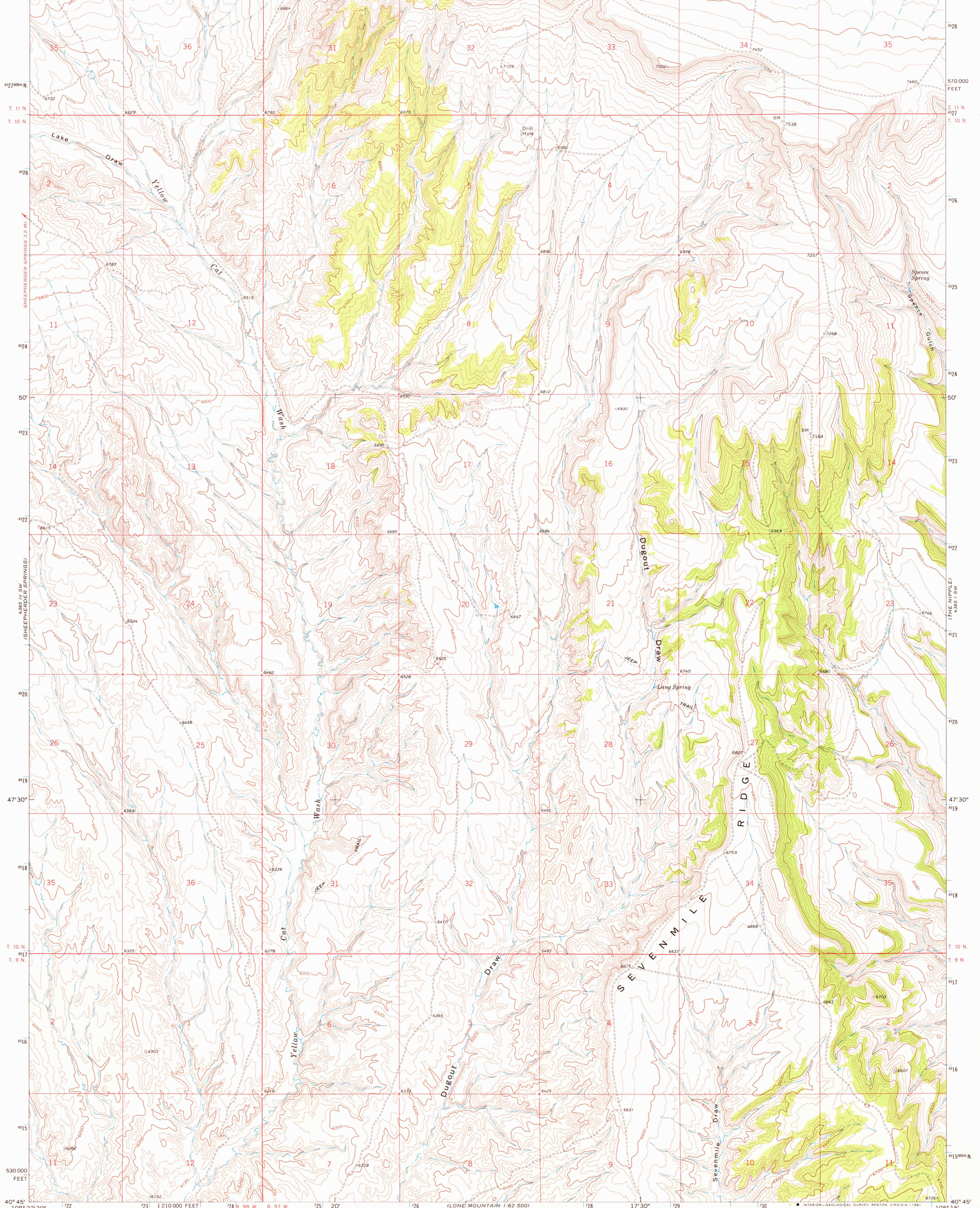


UNITED STATES
DEPARTMENT OF THE INTERIOR
GEOLOGICAL SURVEY

LANG SPRING QUADRANGLE
COLORADO—MOFFAT CO.
7.5 MINUTE SERIES (TOPOGRAPHIC)

108° 22' 30" 723 R. 98 W. R. 97 W. 20' 725 4365 IV NE (POWDER WASH) 721 POWDER WASH 7 MI. 17' 30" 1 230 000 FEET 730 108° 15' 40° 52' 30"



Mapped, edited, and published by the Geological Survey

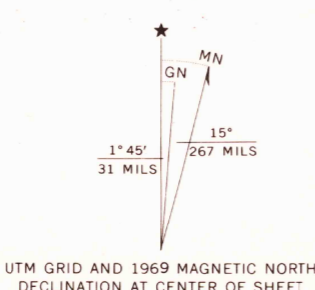
Control by USGS and USC&GS

Topography by photogrammetric methods from aerial photographs taken 1968. Field checked 1969

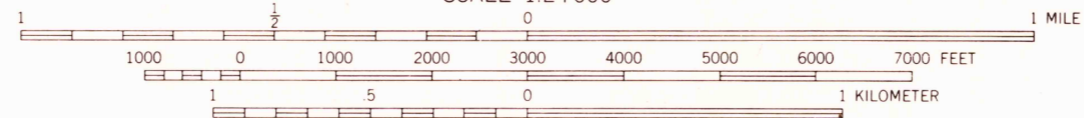
Polyconic projection. 1927 North American datum
10,000-foot grid based on Colorado coordinate system,
north zone
1000-meter Universal Transverse Mercator grid ticks,
zone 12, shown in blue

Fine red dashed lines indicate selected fence lines
To place on the predicted North American Datum 1983
move the projection lines 7 meters north and
55 meters east as shown by dashed corner ticks

Map photoinspected 1973
No major culture or drainage changes observed

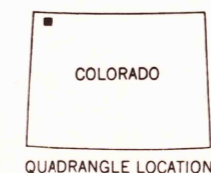


SCALE 1:24 000



CONTOUR INTERVAL 20 FEET
NATIONAL GEODETIC VERTICAL DATUM OF 1929

THIS MAP COMPLIES WITH NATIONAL MAP ACCURACY STANDARDS
FOR SALE BY U. S. GEOLOGICAL SURVEY, DENVER, COLORADO 80225, OR RESTON, VIRGINIA 22092
A FOLDER DESCRIBING TOPOGRAPHIC MAPS AND SYMBOLS IS AVAILABLE ON REQUEST



ROAD CLASSIFICATION
Unimproved road, fair or dry weather

LANG SPRING, COLO.

N4045-W10815/7.5

1969
PHOTOINSPECTED 1973
DMA 4365 IV SE-SERIES V877

JAN 7 1982

1300